



We Commit. We Do.
 Portland Works
 PO Box 1143
 Whangarei 0140
 New Zealand
 Phone: +64 9 432 2656
 Fax: +64 9 432 2822
 Email: info@goldenbay.co.nz

CERTIFICATE OF QUALITY

EverFast™ Type HE Cement

NZS3122:2009



Issued to: Technical Sales Manager

Test Report No: 18#290

Code	Week Ending	Specific Surface Area	Normal Consistency	Initial Set	Final Set	Soundness	Compressive Strength										Free Lime	Sodium Equivalent (NaEq)	Sulphur Trioxide (SO3)
							ISO-CEN				Slump	Concrete							
							1 Day	3 days	7 days	28 days		1 Day	3 days	7 days	28 days				
Mean		519	33.2	112	3:05	1	24.5	41.9	50.7	66.2	83.8	19.5	35.9	42.5	52.5	1.8	0.53	2.4	
Standard Deviation		16	0.9	14	0:11	0.5	1.2	1.2	1.4	1.7	7.6	2.1	1.8	2.8	2.3	0.3	0.01	0.0	
Min		490	31.5	90	2:45	0	22.4	38.9	47.1	64.1	60.0	16.2	32.7	38.5	48.7	1.1	0.51	2.3	
Max		550	34.7	135	3:30	2	27.1	44.2	52.9	70.4	95.0	23.7	40.0	48.3	56.7	2.4	0.56	2.5	
NZS 3122:2009 Requirements				45 min	6:00 max	5 max		25.0 min	40.0 min								0.6 max	3.5 max	
Units		m2/kg	%	minutes	hrs:mins	mm		MPa	MPa	MPa			MPa	MPa	MPa	%	%	%	
181123-508-HE	23/11/18	545	34.2	135	3:00	1	22.4	41.0	50.7		80	17.1	35.1			1.6	0.54	2.3	
181109-626-HE	09/11/18	540	34.2	135	3:15	1	24.2	41.8	51.8		80	17.5	33.8	40.4		1.3	0.54	2.4	
181026-921-HE	26/10/18	550	34.2	120	3:30	1	24.8	44.2	52.4	67.3	75	19.6	38.4	41.9	54.6	1.1	0.52	2.5	
181012-456-HE	12/10/18	490	34.2	105	3:15	1	27.1	43.9	50.2	69.1	60	16.2	37.1	48.0	52.0	1.2	0.51	2.4	
180924-821-HE	24/09/18	510	34.7	135	3:30	0	25.7	41.1	52.1	67.4	85	18.2	34.9	39.9	53.7	1.9	0.54	2.4	
180910-389-HE	10/09/18	535	33.3	120	3:15	1	24.5	41.2	50.7	66.9	80	20.2	36.5	41.0	50.2	1.7	0.54	2.4	
180826-775-HE	26/08/18	515	33.4	120	3:00	1	24.0	40.3	48.7	64.2	90	19.1	36.5	41.8	54.1	2.1	0.55	2.4	
180816-100-HE	16/08/18	500	33.3	105	3:15	1	23.6	41.1	47.1	64.2	95	17.4	32.7	39.7	48.7	2.2	0.55	2.4	
180729-355-HE	29/07/18	515	32.4	120	3:00	1	23.4	41.1	50.9	66.9	85	20.0	37.1	43.6	52.2	1.7	0.54	2.4	
180719-672-HE	19/07/18	530	33.5	135	3:00	1	23.0	41.6	51.6	68.9	95	16.6	33.0	38.5	48.8	2.4	0.55	2.4	
180630-927-HE	30/06/18	515	33.3	120	3:15	1	24.9	43.0	50.6	66.0	80	22.2	37.1	46.5	52.7	1.9	0.56	2.4	
180618-170-HE	18/06/18	535	33.4	105	3:00	1	25.8	43.7	52.9	70.4	90	19.0	34.8	43.7	51.7	1.6	0.54	2.4	
180604-455-HE	04/06/18	515	33.3	105	3:15	2	25.0	42.3	49.1	65.8	80	23.5	38.2	42.2	53.0	2.0	0.53	2.4	
180524-736-HE	24/05/18	500	31.6	90	2:45	1	24.4	38.9	51.2	67.2	85	21.0	33.1	40.3	52.8	1.4	0.54	2.4	
180509-999-HE	09/05/18	500	33.9	120	3:00	1	24.7	43.0	50.4	66.9	85	19.2	35.0	42.8	50.9	1.8	0.55	2.3	
180504-994-HE	04/05/18	510	34.0	105	3:00	1	23.0	41.4	48.9	65.1	80	20.4	35.5	40.3	54.2	2.2	0.54	2.3	
180420-262-HE	20/04/18	510	33.1	105	3:00	1	24.1	42.2	50.9	66.4	85	19.8	37.5	44.9	53.5	1.6	0.51	2.4	
180412-670-HE	12/04/18	520	31.5	90	3:00	1	25.8	42.6	50.6	66.8	80	23.7	40.0	43.3	55.6	1.6	0.51	2.4	
180325-121-HE	25/03/18	525	31.5	105	3:00	1	25.1	43.6	52.0	64.2	90	19.4	35.8	44.2	54.3	1.9	0.51	2.4	
180316-551-HE	16/03/18	535	33.1	105	3:00	0	23.9	42.0	50.2	65.4	80	20.8	36.9	48.3	56.7	2.1	0.53	2.4	
180301-552-HE	01/03/18	515	32.8	105	3:00	1	26.1	42.1	51.4	65.0	80	22.8	37.3	46.7	54.2	1.6	0.52	2.4	
180224-750-HE	24/02/18	525	33.1	120	3:15	2	26.3	41.3	52.9	65.5	90	18.7	35.5	40.3	49.3	1.8	0.53	2.3	
180212-978-HE	12/02/18	490	33.3	105	3:00	2	23.0	41.2	49.0	64.1	95	16.4	35.3	40.3	53.4	1.7	0.53	2.3	
180125-855-HE	25/01/18	520	32.8	105	3:00	1	25.0	41.0	50.8	65.2	85	18.3	34.5	39.3	48.7	1.5	0.55	2.3	
171226-365-HE	26/12/17	530	32.5	90	2:45	1	23.7	40.9	49.9	64.6						1.9	0.55	2.4	

The above samples were tested as received in accordance with the current terms of accreditation and methods stated in NZS 3122:2009 with the exception of:
 - Chemical Analysis to ASTM C114-15
 - Concrete Compressive Strength test results outside the scope of accreditation

This Report must not be reproduced except in full

Jim White

Jim White
 Quality System Co-ordinator



Date issued: 06/12/18

-Sample retested
 # -No result available at time of certificate issue

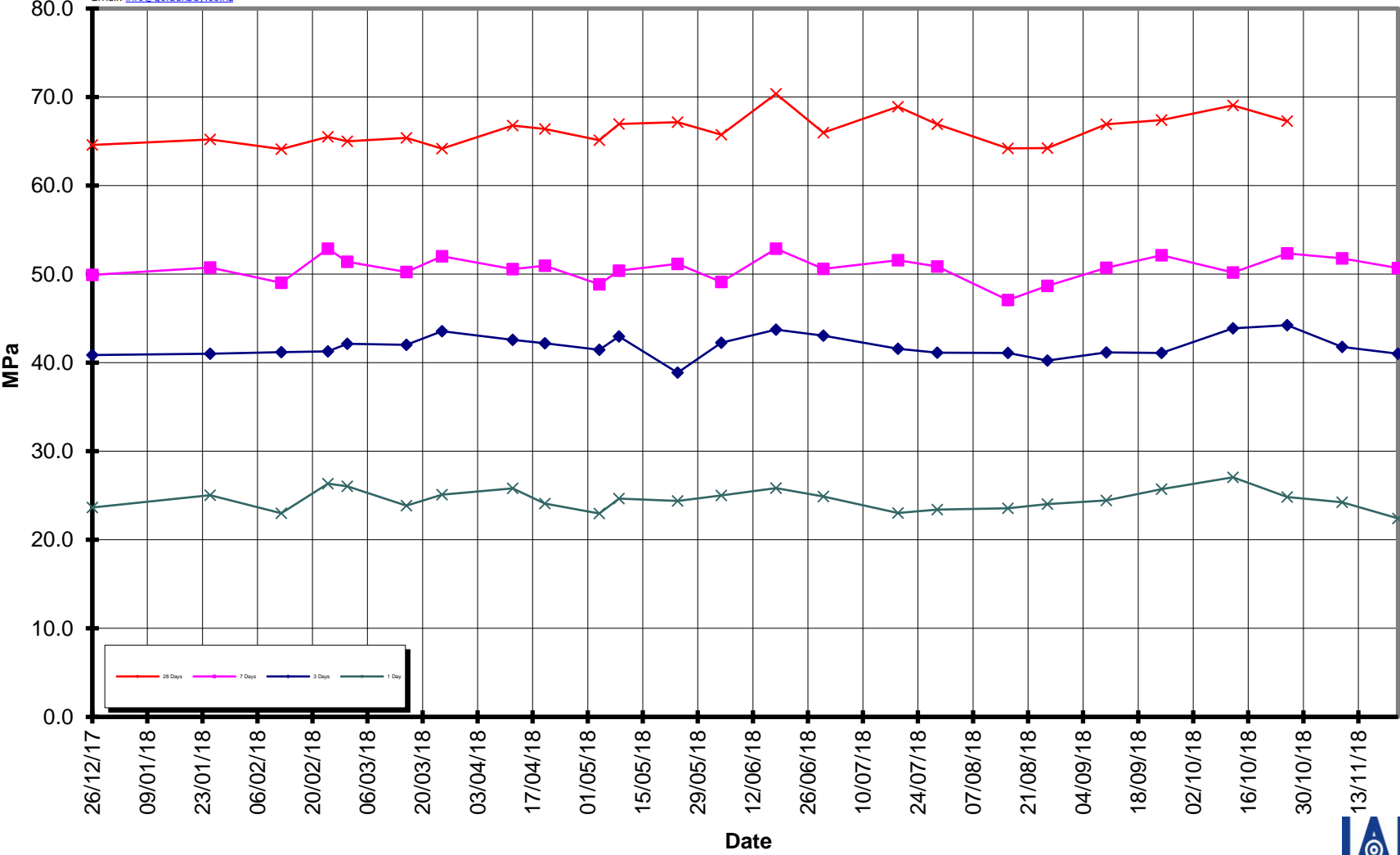


We Commit. We Do.
 Portland Works
 PO Box 1143
 Whangarei 0140
 New Zealand
 Phone: +64 9 432 2656
 Fax: +64 9 432 2822
 Email: info@goldenbay.co.nz

EverFast™ Type HE Cement



Compressive Strength ISO-CEN Mortar



Date issued: 6/12/18

Test Report No: 18#290



We Commit. We Do.
 Portland Works
 PO Box 1143
 Whangarei 0140
 New Zealand
 Phone: +64 9 432 2656
 Fax: +64 9 432 2822
 Email: info@goldenbay.co.nz

EverFast™ Type HE Cement



Compressive Strength Concrete

