

CERTIFICATE OF QUALITY

EverSure™ Type GP Cement

NZS3122:2009 (Bulk Despatch)



Our
NZ made
cement is
genuine
NZ grade
cement.

Issued to: National Sales Manager

Test Report No: 20#127

info@goldenbay.co.nz

Code	Week Ending / Voyage	Specific Surface Area	Normal Consistency	Initial Set	Final Set	Soundness	Compressive Strength						Free Lime	Sodium Equivalent (NaEq)	Sulphur Trioxide (SO3)	
							ISOCEN			Concrete						
							3 days	7 days	28 days	Slump	3 days	7 days				28 days
Mean		345	29.0	131	3:27	1	33.2	45.8	65.2	92.1	26.0	34.0	46.0	2.0	0.54	2.2
Standard Deviation		8	0.1	9	0:08	0.7	0.8	1.3	0.9	3.2	1.4	1.0	1.3	0.3	0.02	0.0
Min		325	28.8	120	3:15	0	31.7	43.2	63.9	90.0	22.7	32.4	44.2	1.6	0.51	2.1
Max		360	29.2	150	3:45	2	35.0	49.1	67.7	100.0	27.9	36.1	47.9	2.7	0.58	2.3
NZS 3122:2009 Requirements				45 min	6:00 max	5 max		35.0 min	45.0 min						0.6 max	3.5 max
Units		m2/kg	%	minutes	hrs:mins	mm	MPa	MPa	MPa	mm	MPa	MPa	MPa	%	%	%
200717-032-GP	17/07/20	345	29.1	135	3:30	1	34.1			90	25.8			2.0	0.53	2.1
200712-034-GP	12/07/20	340	29.2	135	3:30	2	33.6							2.4	0.53	2.2
200708-618-GP	08/07/20	345	29.0	135	3:15	2	34.2	49.1						2.3	0.54	2.2
200703-616-GP	03/07/20	345	29.0	135	3:30	2	32.6	46.0		95	25.8	33.3		2.7	0.53	2.2
200701-257-GP	01/07/20	350	29.1	120	3:30	1	31.7	44.0						2.3	0.53	2.2
200628-255-GP	28/06/20	360	29.0	135	3:30	2	35.0	46.1		90	26.0	33.4		1.9	0.55	2.2
200626-089-GP	26/06/20	345	29.1	120	3:15	1	34.1	47.0						2.1	0.58	2.2
200621-901-GP	21/06/20	355	29.1	120	3:15	1	33.9	46.4		95	23.9	34.2		2.1	0.55	2.2
200618-536-GP	18/06/20	340	29.2	120	3:30	1	33.3	44.8	64.2					1.6	0.51	2.2
200615-534-GP	15/06/20	340	29.1	120	3:15	1	33.2	45.1	66.2	95	24.5	34.3	44.9	2.1	0.54	2.2
200612-190-GP	12/06/20	345	29.2	120	3:15	1	32.3	45.9	64.7	90	26.7	33.0	46.1	2.2	0.51	2.2
200609-188-GP	09/06/20	350	29.1	120	3:30	2	33.1	47.3	65.5					2.2	0.53	2.2
200605-860-GP	05/06/20	360	29.0	135	3:30	1	34.1	46.5	67.7					1.7	0.55	2.2
200603-858-GP	03/06/20	340	29.1	135	3:30	1	32.6	44.3	65.8	90	26.8	33.2	46.6	1.9	0.52	2.2
200529-495-GP	29/05/20	350	29.1	135	3:30	1	33.1	45.3	65.5					1.6	0.55	2.2
200527-493-GP	27/05/20	340	28.9	135	3:30	2	33.1	46.7	64.2	90	27.9	36.1	47.9	1.7	0.55	2.2
200522-032-GP	22/05/20	340	28.8	120	3:15	1	34.4	47.3	65.1					1.7	0.56	2.1
200517-030-GP	17/05/20	350	28.9	135	3:30	2	32.9	46.6	64.7	90	26.4	32.4	44.8	2.0	0.54	2.1
200515-657-GP	15/05/20	335	28.9	150	3:45	0	32.4	43.2	65.2					1.7	0.56	2.3
200513-655-GP	13/05/20	335	28.8	150	3:30	1	33.1	46.0	65.1	95	25.9	35.3	44.6	1.6	0.53	2.2
200508-344-GP	08/05/20	325	28.9	135	3:45	2	32.6	44.7	65.5					1.7	0.55	2.3
200505-327-GP	05/05/20	345	28.8	135	3:30	1	32.8	44.5	63.9	90	27.1	34.6	47.1	2.0	0.52	2.2
200430-034-GP	30/04/20	345	28.9	135	3:30	0	32.5	44.3	65.1	100	22.7	33.2	44.2	2.0	0.53	2.3
200325-999-GP	25/03/20	345	29.2	135	3:30	0	32.9	45.8	65.2	90	26.6	34.2	47.6	2.0	0.55	2.2
200317-595-GP	17/03/20	350	29.2	135	3:15	0	33.3	46.0	64.0	90	27.5	35.0	46.8	2.0	0.53	2.2

This Report must not be reproduced except in full

The above samples were tested as received in accordance with the current terms of accreditation and methods stated in NZS 3122:2009 with the exception of:

Chemical composition to ASTM C114-18

- Concrete Compressive Strength test results outside the scope of accreditation

Raki Harding
Technical Manager

Date issued: 24/07/2020



Portland Works, Portland, Whangarei 0178

Sample retested
No result available at time of certificate issue

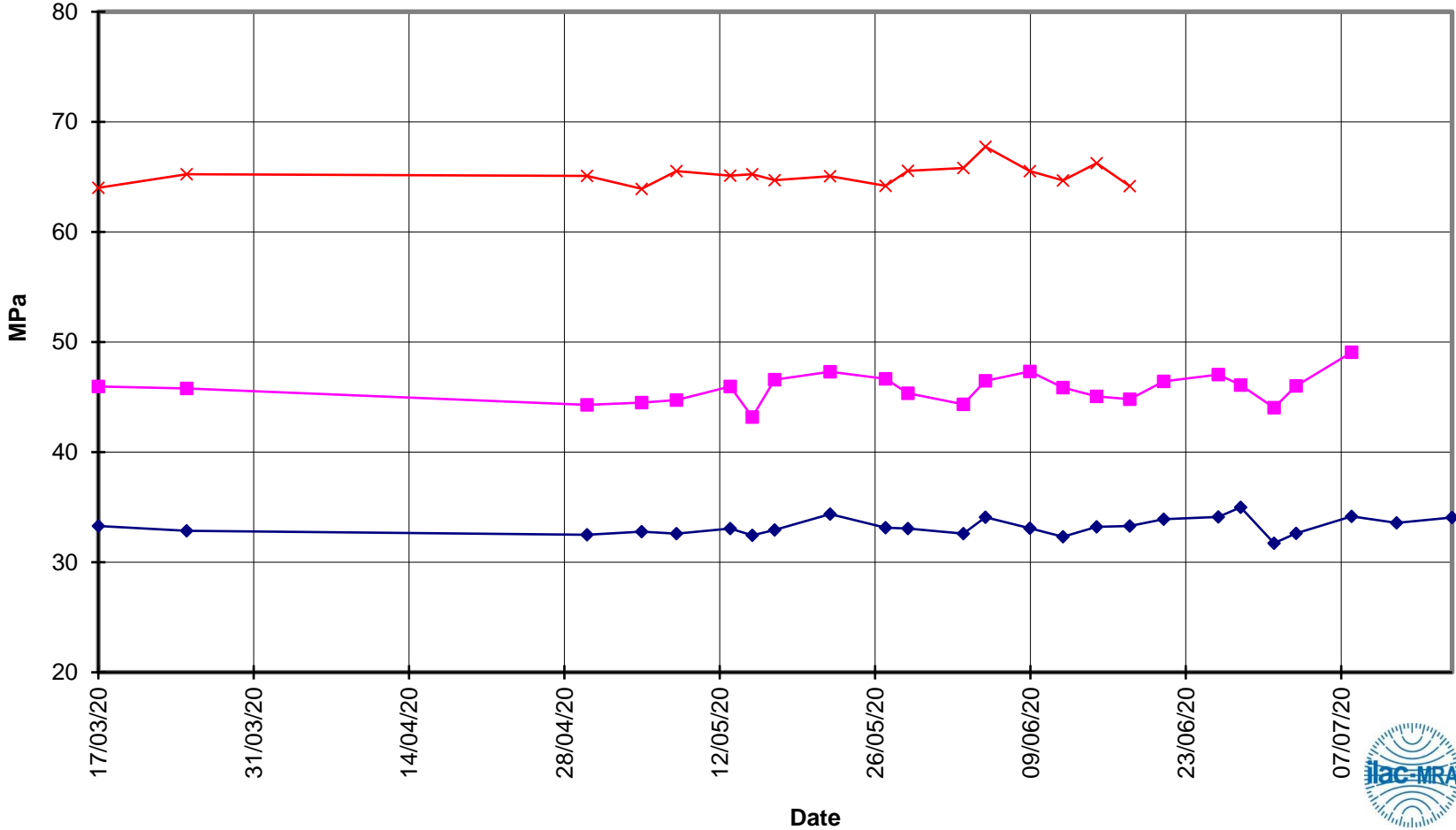


**EverSure™
Type GP Cement**



**Compressive Strength ISO-CEN Mortar
(Bulk Despatch)**

—x— 28 Days —■— 7 Days —◆— 3 Days





EverSure™
Type GP Cement

Compressive Strength Concrete
(Bulk Despatch)



—x— 28 Days —■— 7 Days —◆— 3 Days —■— Slump

