

CERTIFICATE OF QUALITY

EverSure™ Type GP Cement

NZS3122:2009 (Bulk Despatch)



Our
NZ made
cement is
genuine
NZ grade
cement.

Issued to: National Sales Manager

Test Report No: 20#133

info@goldenbay.co.nz

Code	Week Ending / Voyage	Specific Surface Area	Normal Consistency	Initial Set	Final Set	Soundness	Compressive Strength						Free Lime	Sodium Equivalent (NaEq)	Sulphur Trioxide (SO3)	
							ISOCEN			Concrete						
							3 days	7 days	28 days	Slump	3 days	7 days				28 days
Mean		344	29.0	132	3:27	1	33.2	45.9	65.3	92.3	25.9	33.9	45.5	2.0	0.54	2.2
Standard Deviation		8	0.1	10	0:08	0.6	0.8	1.3	0.9	3.3	1.4	1.0	1.5	0.3	0.02	0.1
Min		325	28.8	120	3:15	0	31.7	43.2	63.9	90.0	22.7	32.4	43.3	1.6	0.51	2.1
Max		360	29.2	150	3:45	2	35.0	49.1	67.7	100.0	27.9	36.1	47.9	2.6	0.58	2.3
NZS 3122:2009 Requirements				45 min	6:00 max	5 max		35.0 min	45.0 min						0.6 max	3.5 max
Units		m2/kg	%	minutes	hrs:mins	mm	MPa	MPa	MPa	mm	MPa	MPa	MPa	%	%	%
200725-317-GP	25/07/20	335	29.1	135	3:30	2	32.3							1.9	0.55	2.2
200722-314-GP	22/07/20	340	29.1	150	3:30	1	33.7			90	26.8			1.9	0.52	2.1
200717-032-GP	17/07/20	345	29.1	135	3:30	1	34.1	47.1		90	25.8	34.0		2.0	0.53	2.1
200712-034-GP	12/07/20	340	29.2	135	3:30	2	33.6	46.5						2.4	0.53	2.2
200708-618-GP	08/07/20	345	29.0	135	3:15	2	34.2	49.1						2.3	0.54	2.2
200703-616-GP	03/07/20	345	29.0	135	3:30	2	32.6	46.0		95	25.8	33.3		2.6	0.53	2.2
200701-257-GP	01/07/20	350	29.1	120	3:30	1	31.7	44.0						2.3	0.53	2.2
200628-255-GP	28/06/20	360	29.0	135	3:30	2	35.0	46.1		90	26.0	33.4		1.9	0.55	2.2
200626-089-GP	26/06/20	345	29.1	120	3:15	1	34.1	47.0	65.0					2.1	0.58	2.2
200621-901-GP	21/06/20	355	29.1	120	3:15	1	33.9	46.4	66.5	95	23.9	34.2	43.3	2.1	0.55	2.2
200618-536-GP	18/06/20	340	29.2	120	3:30	1	33.3	44.8	64.2					1.6	0.51	2.2
200615-534-GP	15/06/20	340	29.1	120	3:15	1	33.2	45.1	66.2	95	24.5	34.3	44.9	2.1	0.54	2.2
200612-190-GP	12/06/20	345	29.2	120	3:15	1	32.3	45.9	64.7	90	26.7	33.0	46.1	2.2	0.51	2.2
200609-188-GP	09/06/20	350	29.1	120	3:30	2	33.1	47.3	65.5					2.2	0.53	2.2
200605-860-GP	05/06/20	360	29.0	135	3:30	1	34.1	46.5	67.7					1.7	0.55	2.2
200603-858-GP	03/06/20	340	29.1	135	3:30	1	32.6	44.3	65.8	90	26.8	33.2	46.6	1.9	0.52	2.2
200529-495-GP	29/05/20	350	29.1	135	3:30	1	33.1	45.3	65.5					1.6	0.55	2.2
200527-493-GP	27/05/20	340	28.9	135	3:30	2	33.1	46.7	64.2	90	27.9	36.1	47.9	1.7	0.55	2.2
200522-032-GP	22/05/20	340	28.8	120	3:15	1	34.4	47.3	65.1					1.7	0.56	2.1
200517-030-GP	17/05/20	350	28.9	135	3:30	2	32.9	46.6	64.7	90	26.4	32.4	44.8	2.0	0.54	2.1
200515-657-GP	15/05/20	335	28.9	150	3:45	0	32.4	43.2	65.2					1.7	0.56	2.3
200513-655-GP	13/05/20	335	28.8	150	3:30	1	33.1	46.0	65.1	95	25.9	35.3	44.6	1.6	0.53	2.2
200508-344-GP	08/05/20	325	28.9	135	3:45	2	32.6	44.7	65.5					1.7	0.55	2.3
200505-327-GP	5/05/20	345	28.8	135	3:30	1	32.8	44.5	63.9	90.0	27.1	34.6	47.1	2.0	0.52	2.2
200430-034-GP	30/04/20	345	28.9	135	3:30	0	32.5	44.3	65.1	100	22.7	33.2	44.2	2.0	0.53	2.3

This Report must not be reproduced except in full

The above samples were tested as received in accordance with the current terms of accreditation and methods stated in NZS 3122:2009 with the exception of:

Chemical composition to ASTM C114-18

- Concrete Compressive Strength test results outside the scope of accreditation



Portland Works, Portland, Whangarei 0178

Raki

Raki Harding
Technical Manager

Date issued: 31/07/2020

Page 1 of 3

Sample retested
No result available at time of certificate issue

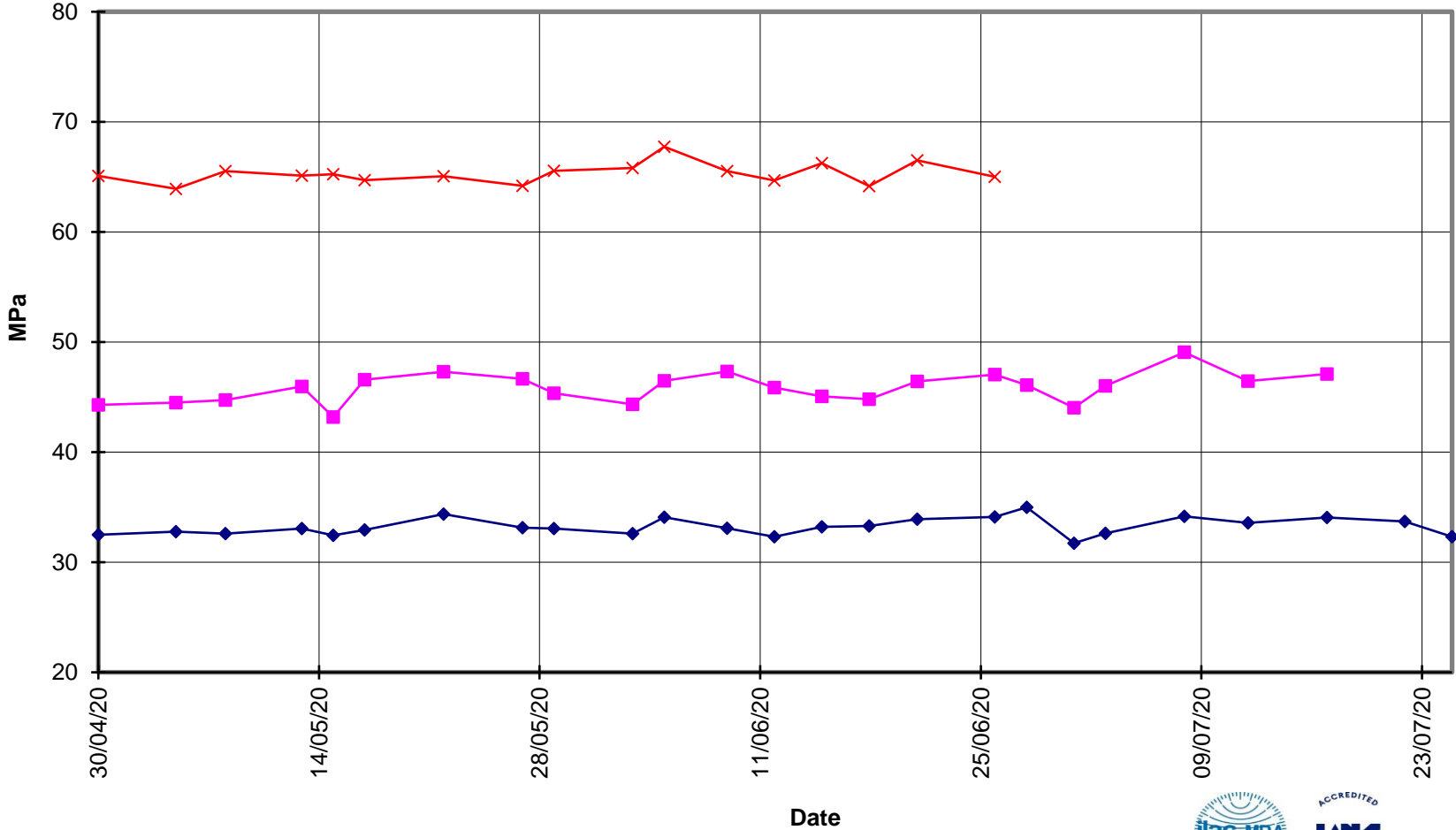


**EverSure™
Type GP Cement**



**Compressive Strength ISO-CEN Mortar
(Bulk Despatch)**

—x— 28 Days —■— 7 Days —◆— 3 Days





EverSure™
Type GP Cement

Compressive Strength Concrete
(Bulk Despatch)



—x— 28 Days —■— 7 Days —◆— 3 Days —■— Slump

