



# CERTIFICATE OF QUALITY

## EverFast™ Type HE Cement

NZS 3122:2009



Our  
NZ made  
cement is  
**genuine**  
NZ grade  
cement.

Issued to: *Technical Sales Manager*

Test Report No: **20#134**

info@goldenbay.co.nz

Code	Week Ending	Specific Surface Area	Normal Consistency	Initial Set	Final Set	Soundness	Compressive Strength								Free Lime	Sodium Equivalent (NaEq)	Sulphur Trioxide (SO3)	
							ISO-CEN				Concrete							
							1 Day	3 days	7 days	28 days	Slump	1 Day	3 days	7 days				28 days
Mean		514	32.7	116	2:59	1	23.4	41.0	49.8	65.7	85.4	17.5	34.2	41.8	52.2	1.8	0.53	2.4
Standard Deviation		20	1.0	8	0:14	0.5	1.3	1.4	1.4	1.2	5.7	1.5	1.8	2.0	2.1	0.3	0.02	0.0
Min		475	28.2	105	2:45	0	20.9	38.5	47.4	63.4	70.0	14.5	31.2	38.5	49.0	0.9	0.49	2.3
Max		565	33.4	135	3:30	2	26.0	44.2	52.8	68.5	95.0	20.2	38.9	45.5	58.1	2.4	0.58	2.5
NZS 3122:2009 Requirements				45 min	6:00 max	5 max		25.0 min	40.0 min								0.6 max	3.5 max
Units		m2/kg	%	minutes	hrs:mins	mm	Mpa	MPa	MPa	MPa	mm	Mpa	MPa	MPa	MPa	%	%	%
200717-316-HE	17/07/20	550	33.1	120	2:45	1	21.7	41.4			85	18.3	32.5			2.0	0.54	2.3
200708-615-HE	08/07/20	510	33.1	120	3:00	1	20.9	38.5	47.6		80	16.2	33.0	40.3		2.1	0.51	2.4
200625-903-HE	25/06/20	530	33.1	120	3:00	2	22.8	40.3	47.4	64.9	80	16.8	33.2	38.7	51.6	1.8	0.56	2.4
200611-206-HE	11/06/20	515	33.0	105	2:45	2	22.5	40.7	49.3	64.6	90	20.2	33.3	42.5	51.2	1.5	0.55	2.4
200517-029-HE	17/05/20	510	33.0	120	2:45	2	22.0	39.7	48.4	64.7	80	14.5	32.2	39.7	49.2	2.0	0.55	2.4
200430-036-HE	30/04/20	535	33.2	120	3:30	1	23.3	42.9	52.2	66.7	80	18.4	34.6	43.9	51.5	1.9	0.53	2.4
200317-594-HE	17/03/20	525	32.8	120	3:15	0	22.1	39.6	48.5	63.6	95	15.8	31.2	38.5	51.4	1.6	0.52	2.4
200305-833-HE	05/03/20	525	33.2	105	3:00	1	22.0	40.7	50.2	63.4	90	16.3	33.3	39.9	54.2	1.3	0.55	2.3
200216-042-HE	16/02/20	565	33.4	120	3:00	1	24.9	42.6	49.9	65.8	90	17.8	32.2	38.7	50.3	0.9	0.58	2.5
200121-839-HE	21/01/20	520	33.4	120	3:00	1	22.4	38.9	51.3	65.3	70	20.1	35.8	43.1	53.3	1.8	0.53	2.4
191227-419-HE	27/12/19	475	33.0	120	3:00	1	22.5	38.9	50.4	68.5	80	15.6	32.6	40.2	51.2	1.6	0.53	2.4
191213-604-HE	13/12/19	500	33.0	105	2:45	1	22.3	41.1	50.6	65.9	85	18.3	32.9	43.5	52.0	1.6	0.53	2.4
191127-837-HE	27/11/19	520	32.9	105	3:00	1	23.4	41.6	50.1	67.7	80	19.5	34.6	43.3	58.1	2.2	0.55	2.4
191115-185-HE	15/11/19	495	32.8	135	3:15	2	26.0	42.4	52.8	66.9	90	16.3	33.2	40.1	49.0	1.6	0.53	2.4
191024-351-HE	24/10/19	505	33.0	120	2:45	1	24.0	42.4	50.0	67.8	85	17.3	34.1	42.0	49.9	2.4	0.53	2.4
191017-573-HE	17/10/19	490	33.0	120	3:00	1	24.2	41.4	49.1	65.1	85	16.5	32.9	41.9	52.4	1.9	0.51	2.4
191001-054-HE	01/10/19	520	32.7	105	2:45	2	24.6	41.8	48.7	65.2	90	17.9	35.7	42.1	53.1	2.0	0.53	2.5
190920-350-HE	20/09/19	520	32.6	105	3:00	1	22.8	40.4	51.0	65.1	85	17.0	35.6	41.3	55.0	1.8	0.52	2.4
190908-041-HE	08/09/19	515	32.7	105	2:45	1	23.5	42.3	49.0	65.4						1.6	0.52	2.4
190830-237-HE	30/08/19	520	32.7	105	2:45	1	24.4	40.3	49.0	64.8	90	19.6	35.7	42.6	53.6	1.7	0.50	2.5
190810-294-HE	10/08/19	510	32.6	120	3:00	0	24.4	40.8	50.0	65.2	90	17.4	36.1	45.5	55.1	1.5	0.49	2.4
190727-356-HE	27/07/19	490	28.2	120	3:15	1	23.0	39.3	49.6	66.0	90	15.9	34.4	43.7	52.5	1.4	0.52	2.3
190712-708-HE	12/07/19	525	33.0	120	3:30	1	25.7	42.7	50.9	66.2	90	17.6	38.9	44.5	51.8	2.2	0.53	2.4
190628-132-HE	28/06/19	495	31.6	120	2:45	1	25.7	44.2	51.3	66.5	90	17.5	36.5	42.2	51.1	2.2	0.56	2.4
190609-519-HE	09/06/19	490	31.6	120	3:15	1	23.2	39.9	48.3	65.6	80	19.0	36.2	43.9	51.7	1.9	0.52	2.3

The above samples were tested as received in accordance with the current terms of accreditation and methods stated in NZS 3122:2009 with the exception of:  
 - Chemical Analysis to ASTM C114-18  
 - Concrete Compressive Strength test results outside the scope of accreditation

**This Report must not be reproduced except in full**



Portland Works, Portland, Whangarei 0178

# -Sample retested  
 # -No result available at time of certificate issue

Raki Harding  
 Technical Manager

Date issued: 31/07/20

Page 1 of 3

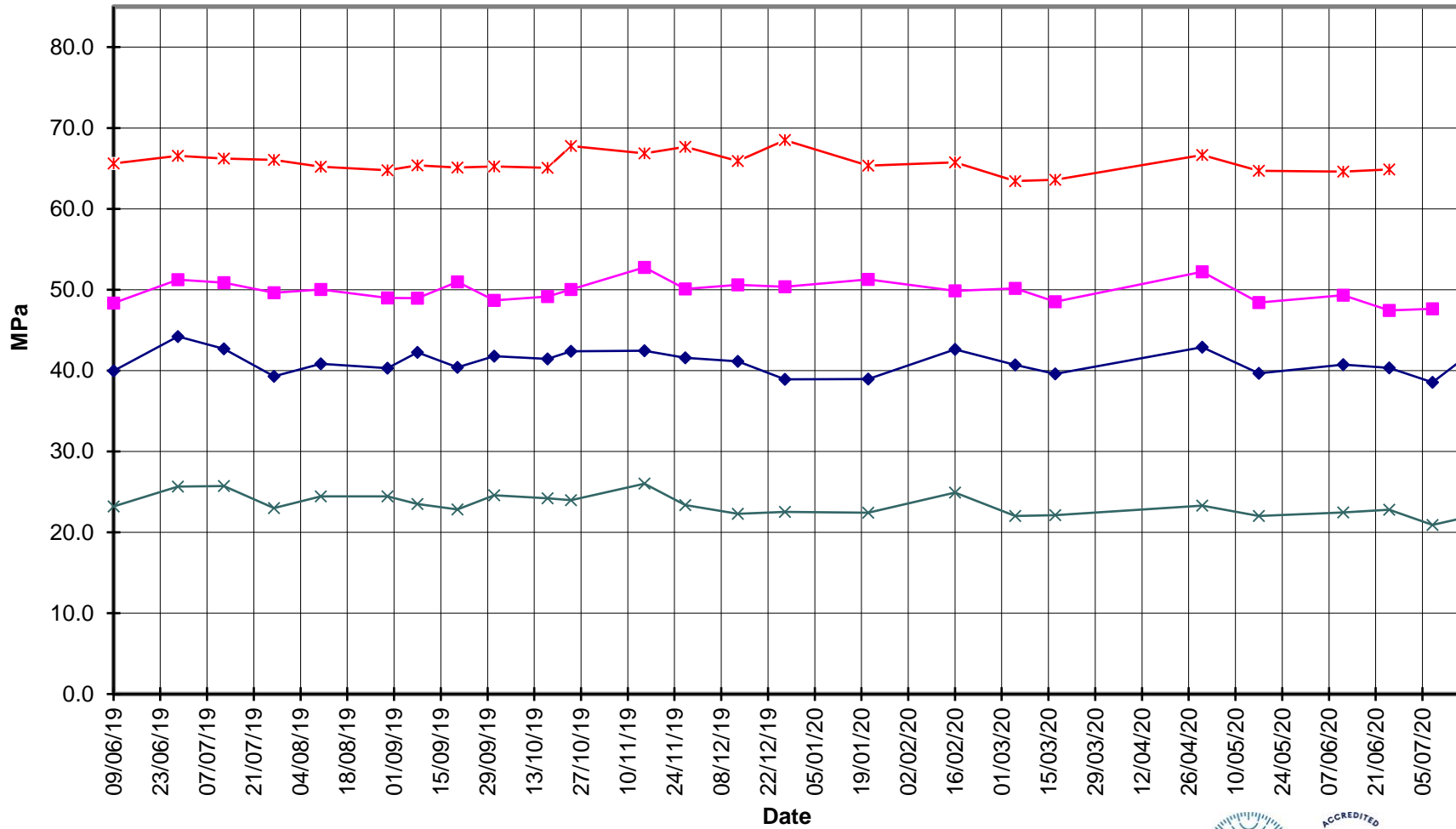


# EverFast™ Type HE Cement



## Compressive Strength ISO-CEN Mortar

—x— 28 Days    —■— 7 Days    —◆— 3 Days    —x— 1 Day



Date issued: 31/07/20

Test Report No: 20#134



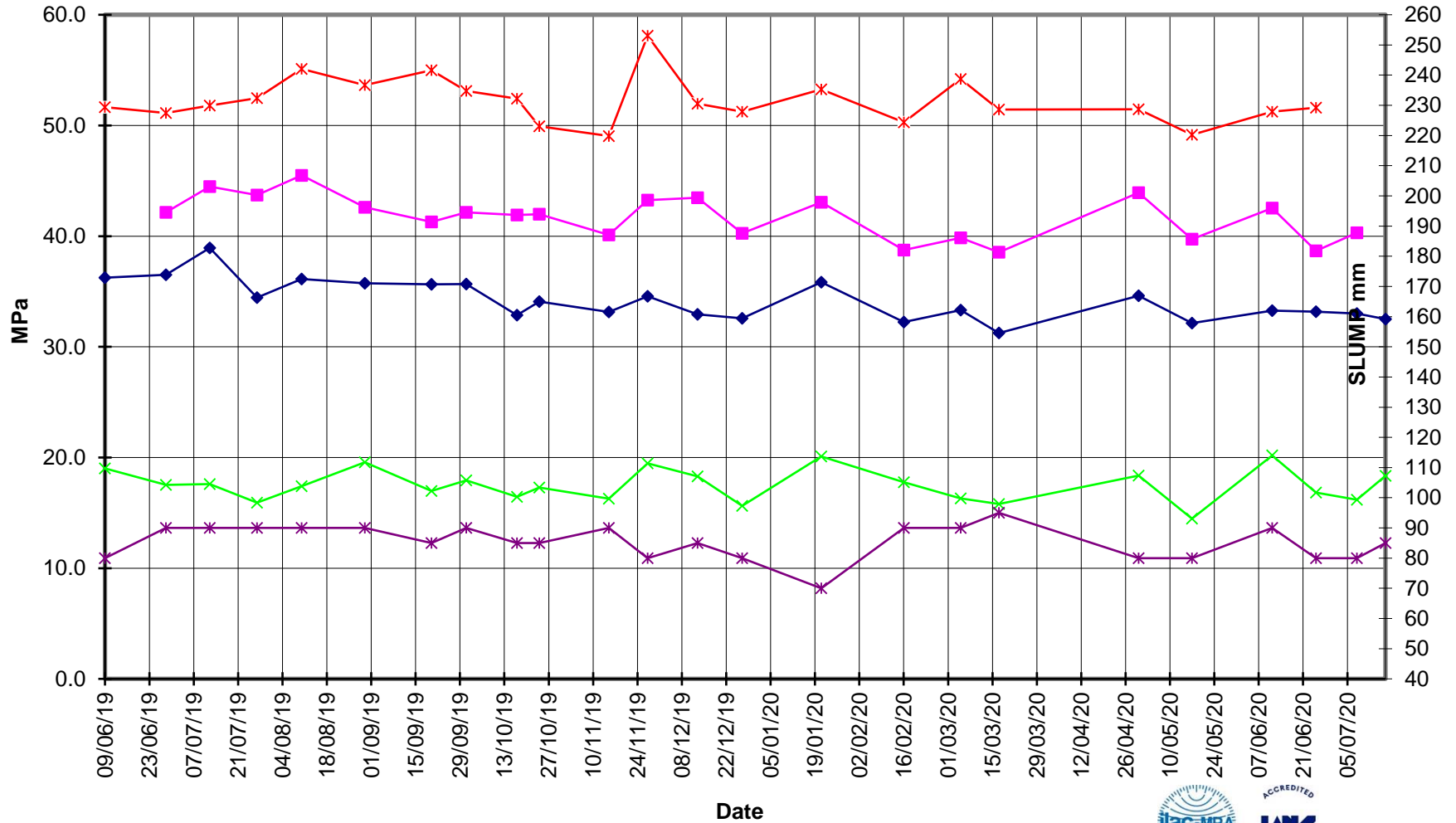


# EverFast™ Type HE Cement



## Compressive Strength Concrete

—x— 28 Days —■— 7 Days —◆— 3 Days —x— 1 Day —\*— Slump



Date issued: 31/07/20

Test Report No: 20#134

