



CERTIFICATE OF QUALITY

EverFast™ Type HE Cement

NZS 3122:2009



Our
NZ made
cement is
genuine
NZ grade
cement.

Issued to: *Technical Sales Manager*

Test Report No: **20#167**

info@goldenbay.co.nz

Code	Week Ending	Specific Surface Area	Normal Consistency	Initial Set	Final Set	Soundness	Compressive Strength										Free Lime	Sodium Equivalent (NaEq)	Sulphur Trioxide (SO3)
							ISO-CEN				Concrete								
							1 Day	3 days	7 days	28 days	Slump	1 Day	3 days	7 days	28 days				
Mean		515	32.8	114	2:56	1	22.9	40.7	49.6	65.6	84.2	17.2	33.5	41.2	52.4	1.8	0.54	2.4	
Standard Deviation		19	1.0	12	0:16	0.6	1.4	1.4	1.5	1.4	6.2	1.7	1.6	2.2	2.2	0.3	0.02	0.06	
Min		475	28.2	75	2:00	0	20.2	37.6	46.6	63.4	70.0	13.4	29.7	36.3	49.0	0.9	0.49	2.3	
Max		565	33.4	135	3:30	2	26.0	42.9	52.8	68.5	95.0	20.2	36.1	45.5	58.1	2.4	0.59	2.5	
NZS 3122:2009 Requirements				45 min	6:00 max	5 max		25.0 min	40.0 min								0.6 max	3.5 max	
Units		m2/kg	%	minutes	hrs:mins	mm	Mpa	MPa	MPa	MPa	mm	Mpa	MPa	MPa	MPa	%	%	%	
200909-852-HE	09/09/20	500	33.3	75	2:00	1	20.9	40.1	48.3		80	13.4	29.7	36.3		2.0	0.59	2.4	
200827-153-HE	27/08/20	510	33.3	135	3:15	1	20.2	37.6	46.6		75	15.8	33.4	42.7		2.1	0.59	2.3	
200817-662-HE	17/08/20	510	33.4	105	3:00	2	20.7	41.6	49.4		75	19.3	32.8	40.7	52.0	1.5	0.52	2.3	
200717-316-HE	17/07/20	550	33.1	120	2:45	1	21.7	41.4	51.5	67.5	85	18.3	32.5	38.0	51.6	2.0	0.54	2.3	
200708-615-HE	08/07/20	510	33.1	120	3:00	1	20.9	38.5	47.6	63.9	80	16.2	33.0	40.3	55.1	2.1	0.51	2.4	
200625-903-HE	25/06/20	530	33.1	120	3:00	2	22.8	40.3	47.4	64.9	80	16.8	33.2	38.7	51.6	1.8	0.56	2.4	
200611-206-HE	11/06/20	515	33.0	105	2:45	2	22.5	40.7	49.3	64.6	90	20.2	33.3	42.5	51.2	1.5	0.55	2.4	
200517-029-HE	17/05/20	510	33.0	120	2:45	2	22.0	39.7	48.4	64.7	80	14.5	32.2	39.7	49.2	2.0	0.55	2.4	
200430-036-HE	30/04/20	535	33.2	120	3:30	1	23.3	42.9	52.2	66.7	80	18.4	34.6	43.9	51.5	1.9	0.53	2.4	
200317-594-HE	17/03/20	525	32.8	120	3:15	0	22.1	39.6	48.5	63.6	95	15.8	31.2	38.5	51.4	1.6	0.52	2.4	
200305-833-HE	05/03/20	525	33.2	105	3:00	1	22.0	40.7	50.2	63.4	90	16.3	33.3	39.9	54.2	1.3	0.55	2.3	
200216-042-HE	16/02/20	565	33.4	120	3:00	1	24.9	42.6	49.9	65.8	90	17.8	32.2	38.7	50.3	0.9	0.58	2.5	
200121-839-HE	21/01/20	520	33.4	120	3:00	1	22.4	38.9	51.3	65.3	70	20.1	35.8	43.1	53.3	1.8	0.53	2.4	
191227-419-HE	27/12/19	475	33.0	105	3:00	1	22.5	38.9	50.4	68.5	80	15.6	32.6	40.2	51.2	1.6	0.53	2.4	
191213-604-HE	13/12/19	500	33.0	120	2:45	1	22.3	41.1	50.6	65.9	85	18.3	32.9	43.5	52.0	1.6	0.53	2.4	
191127-837-HE	27/11/19	520	32.9	105	3:00	1	23.4	41.6	50.1	67.7	80	19.5	34.6	43.3	58.1	2.2	0.55	2.4	
191115-185-HE	15/11/19	495	32.8	135	3:15	2	26.0	42.4	52.8	66.9	90	16.3	33.2	40.1	49.0	1.6	0.53	2.4	
191024-351-HE	24/10/19	505	33.0	120	2:45	1	24.0	42.4	50.0	67.8	85	17.3	34.1	42.0	49.9	2.4	0.53	2.4	
191017-573-HE	17/10/19	490	33.0	120	3:00	1	24.2	41.4	49.1	65.1	85	16.5	32.9	41.9	52.4	1.9	0.51	2.4	
191001-054-HE	01/10/19	520	32.7	105	2:45	2	24.6	41.8	48.7	65.2	90	17.9	35.7	42.1	53.1	2.0	0.53	2.5	
190920-350-HE	20/09/19	520	32.6	105	3:00	1	22.8	40.4	51.0	65.1	85	17.0	35.6	41.3	55.0	1.8	0.52	2.4	
190908-041-HE	08/09/19	515	32.7	105	2:45	1	23.5	42.3	49.0	65.4						1.6	0.52	2.4	
190830-237-HE	30/08/19	520	32.7	105	2:45	1	24.4	40.3	49.0	64.8	90	19.6	35.7	42.6	53.6	1.7	0.50	2.5	
190810-294-HE	10/08/19	510	32.6	120	3:00	0	24.4	40.8	50.0	65.2	90	17.4	36.1	45.5	55.1	1.5	0.49	2.4	
190727-356-HE	27/07/19	490	28.2	120	3:15	1	23.0	39.3	49.6	66.0	90	15.9	34.4	43.7	52.5	1.4	0.52	2.3	

The above samples were tested as received in accordance with the current terms of accreditation and methods stated in NZS 3122:2009 with the exception of:
 - Chemical Analysis to ASTM C114-18
 - Concrete Compressive Strength test results outside the scope of accreditation

This Report must not be reproduced except in full

Works Chemist
Vincent Lane



Portland Works, Portland, Whangarei 0178

-Sample tested @ 50 days
 # -No result available at time of certificate issue

Date issued: 25/09/20

Page 1 of 3

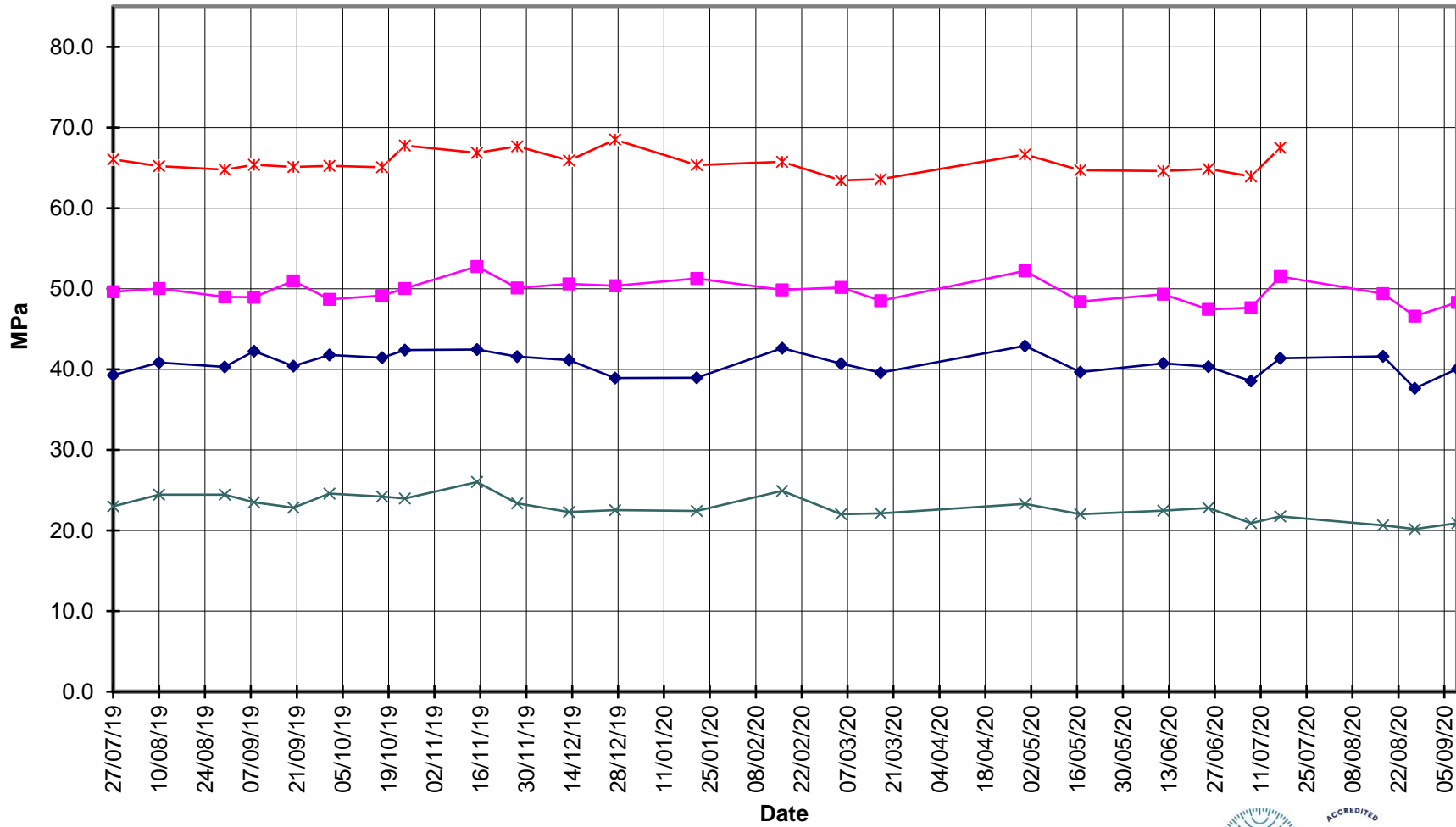


EverFast™ Type HE Cement



Compressive Strength ISO-CEN Mortar

—x— 28 Days —■— 7 Days —◆— 3 Days —x— 1 Day



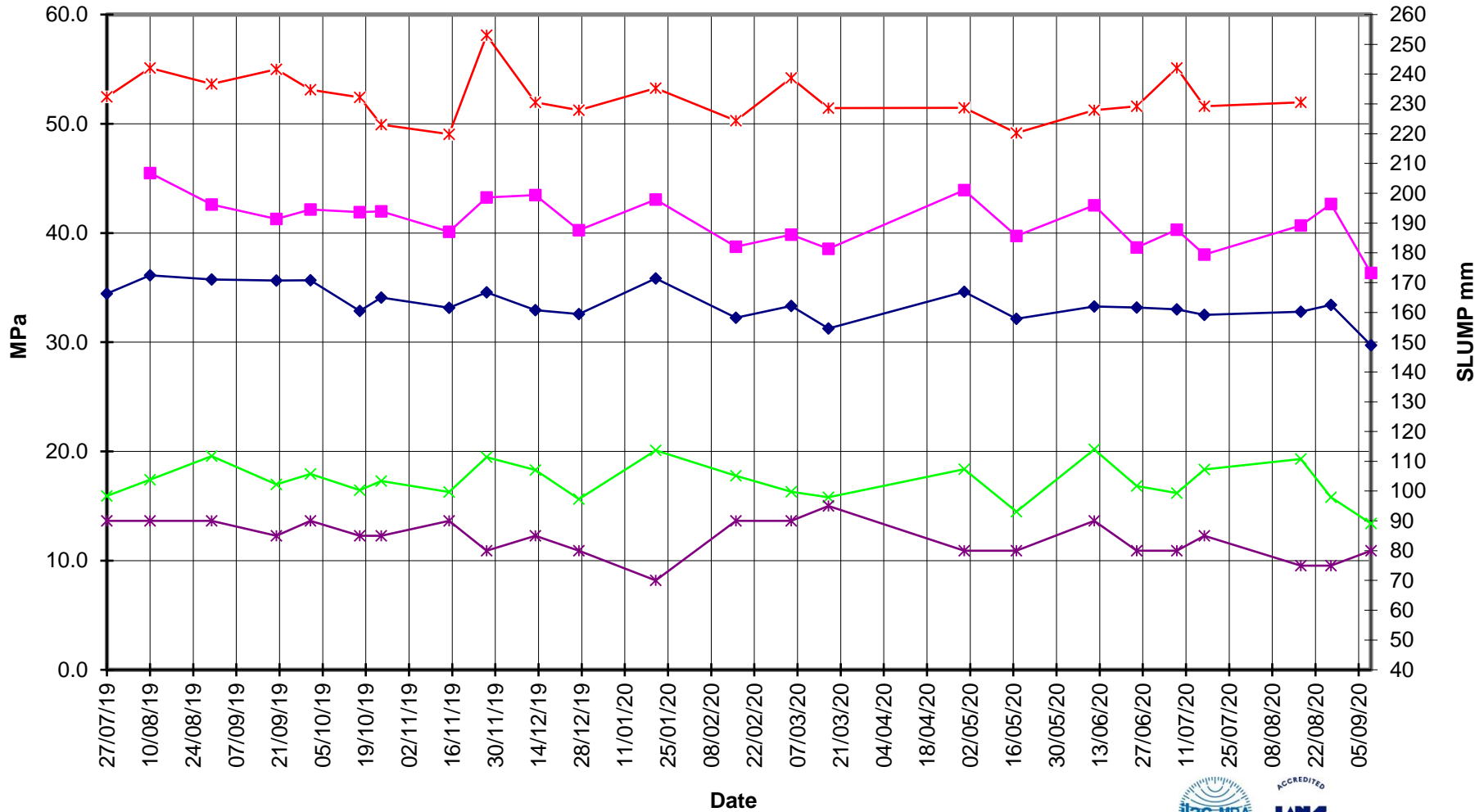


EverFast™ Type HE Cement



Compressive Strength Concrete

—x— 28 Days —■— 7 Days —◆— 3 Days —x— 1 Day —*— Slump



Date issued: 25/09/20

Test Report No: 20#167

