



# CERTIFICATE OF QUALITY

## EverSure™ Type GP Cement

NZS3122:2009 (Bulk Despatch)



Our  
NZ made  
cement is  
**genuine**  
NZ grade  
cement.

Issued to: National Sales Manager

Test Report No: 20#168

info@goldenbay.co.nz

| Code                       | Week Ending / Voyage | Specific Surface Area | Normal Consistency | Initial Set | Final Set | Soundness | Compressive Strength |          |          |          |        |        | Free Lime | Sodium Equivalent (NaEq) | Sulphur Trioxide (SO3) |         |
|----------------------------|----------------------|-----------------------|--------------------|-------------|-----------|-----------|----------------------|----------|----------|----------|--------|--------|-----------|--------------------------|------------------------|---------|
|                            |                      |                       |                    |             |           |           | ISOCEN               |          |          | Concrete |        |        |           |                          |                        |         |
|                            |                      |                       |                    |             |           |           | 3 days               | 7 days   | 28 days  | Slump    | 3 days | 7 days |           |                          |                        | 28 days |
| Mean                       |                      | 341                   | 29.0               | 134         | 3:27      | 1         | 32.0                 | 45.2     | 65.0     | 91.7     | 23.9   | 33.4   | 45.1      | 2.1                      | 0.55                   | 2.2     |
| Standard Deviation         |                      | 8                     | 0.1                | 7           | 0:10      | 0.4       | 1.4                  | 1.9      | 0.9      | 3.9      | 1.6    | 1.3    | 1.4       | 0.2                      | 0.02                   | 0.02    |
| Min                        |                      | 320                   | 28.8               | 120         | 3:15      | 1         | 28.6                 | 41.0     | 63.9     | 85.0     | 21.0   | 30.3   | 43.2      | 1.7                      | 0.52                   | 2.1     |
| Max                        |                      | 355                   | 29.2               | 150         | 3:45      | 2         | 34.2                 | 49.1     | 66.6     | 100.0    | 26.8   | 35.5   | 47.2      | 2.6                      | 0.59                   | 2.3     |
| NZS 3122:2009 Requirements |                      |                       |                    | 45 min      | 6:00 max  | 5 max     |                      | 35.0 min | 45.0 min |          |        |        |           |                          | 0.6 max                | 3.5 max |
| Units                      |                      | m2/kg                 | %                  | minutes     | hrs:mins  | mm        | MPa                  | MPa      | MPa      | mm       | MPa    | MPa    | MPa       | %                        | %                      | %       |
| 200925-327-GP              | 25/09/20             | 345                   | 28.8               | 150         | 3:45      | 2         | 28.9                 |          |          | 90       | 23.2   |        |           | 2.1                      | 0.56                   | 2.3     |
| 200923-329-GP              | 23/09/20             | 340                   | 28.8               | 135         | 3:45      | 1         | 31.4                 |          |          |          |        |        |           | 2.3                      | 0.56                   | 2.2     |
| 200919-098-GP              | 19/09/20             | 340                   | 28.9               | 135         | 3:45      | 1         | 28.6                 | 41.0     |          | 100      | 21.0   | 30.3   |           | 2.2                      | 0.55                   | 2.2     |
| 200916-096-GP              | 16/09/20             | 345                   | 28.9               | 135         | 3:45      | 1         | 32.1                 | 42.1     |          |          |        |        |           | 2.3                      | 0.56                   | 2.2     |
| 200912-850-GP              | 12/09/20             | 335                   | 29.0               | 120         | 3:15      | 1         | 30.6                 | 43.4     |          |          |        |        |           | 2.3                      | 0.55                   | 2.2     |
| 200909-848-GP              | 09/09/20             | 350                   | 29.0               | 135         | 3:15      | 1         | 30.4                 | 44.1     |          | 85       | 23.5   | 33.6   |           | 2.1                      | 0.55                   | 2.2     |
| 200903-582-GP              | 03/09/20             | 340                   | 29.0               | 135         | 3:15      | 1         | 30.6                 | 43.6     |          |          |        |        |           | 1.9                      | 0.54                   | 2.2     |
| 200830-530-GP              | 30/08/20             | 335                   | 29.0               | 135         | 3:15      | 1         | 31.6                 | 43.5     |          | 90       | 23.5   | 33.7   |           | 2.2                      | 0.58                   | 2.1     |
| 200825-155-GP              | 25/08/20             | 355                   | 29.1               | 135         | 3:15      | 2         | 31.9                 | 44.8     | 64.3     | 90       | 22.8   | 32.8   | 45.7      | 2.1                      | 0.58                   | 2.2     |
| 200822-157-GP              | 22/08/20             | 355                   | 29.1               | 135         | 3:30      | 1         | 32.7                 | 45.2     | 63.9     |          |        |        |           | 2.0                      | 0.59                   | 2.2     |
| 200821-796-GP              | 21/08/20             | 335                   | 29.1               | 120         | 3:30      | 1         | 33.1                 | 46.8     | 64.4     |          |        |        |           | 1.8                      | 0.56                   | 2.2     |
| 200817-794-GP              | 17/08/20             | 345                   | 29.1               | 120         | 3:15      | 1         | 33.4                 | 45.8     | 64.5     | 90       | 23.8   | 33.8   | 45.9      | 1.9                      | 0.57                   | 2.1     |
| 200813-457-GP              | 13/08/20             | 345                   | 29.2               | 135         | 3:30      | 1         | 32.5                 | 45.4     | 64.1     | 95       | 23.5   | 33.5   | 43.2      | 2.5                      | 0.55                   | 2.2     |
| 200811-455-GP              | 11/08/20             | 330                   | 29.2               | 135         | 3:30      | 1         | 32.8                 | 46.3     | 64.3     |          |        |        |           | 2.1                      | 0.55                   | 2.2     |
| 200807-086-GP              | 07/08/20             | 340                   | 29.0               | 135         | 3:30      | 1         | 31.7                 | 45.3     | 66.2     |          |        |        |           | 2.2                      | 0.56                   | 2.3     |
| 200804-084-GP              | 04/08/20             | 345                   | 29.1               | 135         | 3:15      | 1         | 32.2                 | 46.0     | 65.5     | 95       | 23.5   | 32.7   | 44.4      | 2.0                      | 0.54                   | 2.2     |
| 200731-794-GP              | 31/07/20             | 335                   | 29.0               | 135         | 3:15      | 1         | 31.9                 | 44.6     | 66.1     | 90       | 23.7   | 33.8   | 44.5      | 1.8                      | 0.52                   | 2.2     |
| 200729-796-GP              | 29/07/20             | 320                   | 29.0               | 135         | 3:30      | 1         | 30.7                 | 43.6     | 64.8     |          |        |        |           | 1.7                      | 0.54                   | 2.2     |
| 200725-317-GP              | 25/07/20             | 335                   | 29.1               | 135         | 3:30      | 2         | 32.3                 | 47.2     | 66.5     |          |        |        |           | 1.9                      | 0.55                   | 2.2     |
| 200722-314-GP              | 22/07/20             | 340                   | 29.1               | 150         | 3:30      | 1         | 33.7                 | 47.6     | 66.6     | 90       | 26.8   | 35.5   | 46.4      | 1.9                      | 0.52                   | 2.1     |
| 200717-032-GP              | 17/07/20             | 345                   | 29.1               | 135         | 3:30      | 1         | 34.1                 | 47.1     | 65.1     | 90       | 25.8   | 34.0   | 43.6      | 2.0                      | 0.53                   | 2.1     |
| 200712-034-GP              | 12/07/20             | 340                   | 29.2               | 135         | 3:30      | 2         | 33.6                 | 46.5     | 65.3     |          |        |        |           | 2.4                      | 0.53                   | 2.2     |
| 200708-618-GP              | 08/07/20             | 345                   | 29.0               | 135         | 3:15      | 2         | 34.2                 | 49.1     | 64.5     |          |        |        |           | 2.3                      | 0.54                   | 2.2     |
| 200703-616-GP              | 03/07/20             | 345                   | 29.0               | 135         | 3:30      | 2         | 32.6                 | 46.0     | 64.2     | 95       | 25.8   | 33.3   | 47.2      | 2.6                      | 0.53                   | 2.2     |
| 200701-257-GP              | 01/07/20             | 350                   | 29.1               | 120         | 3:30      | 1         | 31.7                 | 44.0     | 64.6     |          |        |        |           | 2.3                      | 0.53                   | 2.2     |

This Report must not be reproduced except in full

The above samples were tested as received in accordance with the current terms of accreditation and methods stated in NZS 3122:2009 with the exception of:

Chemical composition to ASTM C114-18

- Concrete Compressive Strength test results outside the scope of accreditation

# No result available at time of certificate issue

Sample retested

*Vincent Lane*

Works Chemist  
Vincent Lane

Date issued: 02/10/20



Portland Works, Portland, Whangarei 0178

Page 1 of 3

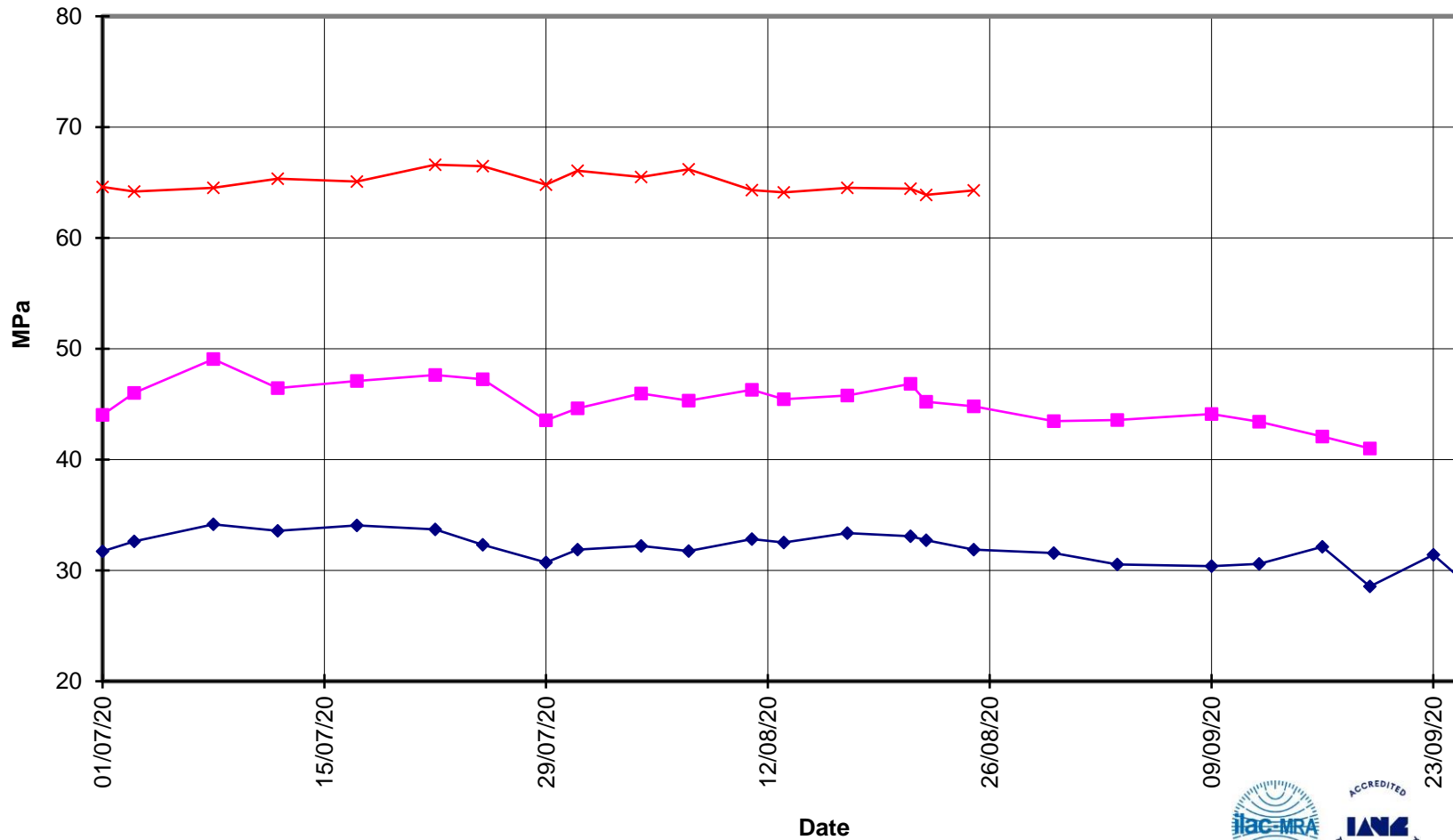


**EverSure™  
Type GP Cement**

**Compressive Strength ISO-CEN Mortar  
(Bulk Despatch)**



—x— 28 Days    —■— 7 Days    —◆— 3 Days





**EverSure™  
Type GP Cement**

**Compressive Strength Concrete  
(Bulk Despatch)**



—x— 28 Days —■— 7 Days —◆— 3 Days —■— Slump

