



# CERTIFICATE OF QUALITY

## EverSure™ Type GP Cement

NZS3122:2009 (Bulk Despatch)



Our  
NZ made  
cement is  
genuine  
NZ grade  
cement.

Issued to: National Sales Manager

Test Report No: 20#181

info@goldenbay.co.nz

Code	Week Ending / Voyage	Specific Surface Area	Normal Consistency	Initial Set	Final Set	Soundness	Compressive Strength						Free Lime	Sodium Equivalent (NaEq)	Sulphur Trioxide (SO3)	
							ISOCEN			Concrete						
							3 days	7 days	28 days	Slump	3 days	7 days				28 days
Mean		342	29.0	136	3:27	1	31.7	44.9	65.1	91.7	23.6	33.4	44.8	2.1	0.55	2.2
Standard Deviation		8	0.2	8	0:11	0.4	1.6	2.1	0.9	3.9	1.5	1.3	1.2	0.2	0.02	0.02
Min		320	28.5	120	3:15	0	28.6	41.0	63.9	85.0	21.0	30.3	43.2	1.7	0.52	2.1
Max		355	29.2	150	3:45	2	34.2	49.1	66.6	100.0	26.8	35.5	46.4	2.5	0.59	2.3
NZS 3122:2009 Requirements				45 min	6:00 max	5 max		35.0 min	45.0 min						0.6 max	3.5 max
Units		m2/kg	%	minutes	hrs:mins	mm	MPa	MPa	MPa	mm	MPa	MPa	MPa	%	%	%
201001-699-GP	01/10/20	350	28.7	150	3:45	1	29.2							2.2	0.56	2.2
200929-697-GP	29/09/20	355	28.5	150	3:15	2	29.3			95	21.8			2.1	0.56	2.3
200925-327-GP	25/09/20	345	28.8	150	3:45	2	28.9	42.0		90	23.2			2.1	0.56	2.3
200923-329-GP	23/09/20	340	28.8	135	3:45	1	31.4	42.2						2.3	0.56	2.2
200919-098-GP	19/09/20	340	28.9	135	3:45	1	28.6	41.0		100	21.0	30.3		2.2	0.55	2.2
200916-096-GP	16/09/20	345	28.9	135	3:45	1	32.1	42.1						2.3	0.56	2.2
200912-850-GP	12/09/20	335	29.0	120	3:15	1	30.6	43.4						2.3	0.55	2.2
200909-848-GP	09/09/20	350	29.0	135	3:15	1	30.4	44.1		85	23.5	33.6		2.1	0.55	2.2
200903-582-GP	03/09/20	340	29.0	135	3:15	1	30.6	43.6	65.8					1.9	0.54	2.2
200830-530-GP	30/08/20	335	29.0	135	3:15	1	31.6	43.5	65.3	90	23.5	33.7		2.2	0.58	2.1
200825-155-GP	25/08/20	355	29.1	135	3:15	2	31.9	44.8	64.3	90	22.8	32.8	45.7	2.1	0.58	2.2
200822-157-GP	22/08/20	355	29.1	135	3:30	1	32.7	45.2	63.9					2.0	0.59	2.2
200821-796-GP	21/08/20	335	29.1	120	3:30	1	33.1	46.8	64.4					1.8	0.56	2.2
200817-794-GP	17/08/20	345	29.1	120	3:15	1	33.4	45.8	64.5	90	23.8	33.8	45.9	1.9	0.57	2.1
200813-457-GP	13/08/20	345	29.2	135	3:30	1	32.5	45.4	64.1	95	23.5	33.5	43.2	2.5	0.55	2.2
200811-455-GP	11/08/20	330	29.2	135	3:30	1	32.8	46.3	64.3					2.1	0.55	2.2
200807-086-GP	07/08/20	340	29.0	135	3:30	1	31.7	45.3	66.2					2.2	0.56	2.3
200804-084-GP	04/08/20	345	29.1	135	3:15	0	32.2	46.0	65.5	95	23.5	32.7	44.4	2.0	0.54	2.2
200731-794-GP	31/07/20	335	29.0	135	3:15	1	31.9	44.6	66.1	90	23.7	33.8	44.5	1.8	0.52	2.2
200729-796-GP	29/07/20	320	29.0	135	3:30	1	30.7	43.6	64.8					1.7	0.54	2.2
200725-317-GP	25/07/20	335	29.1	135	3:30	2	32.3	47.2	66.5					1.9	0.55	2.2
200722-314-GP	22/07/20	340	29.1	150	3:30	1	33.7	47.6	66.6	90	26.8	35.5	46.4	1.9	0.52	2.1
200717-032-GP	17/07/20	345	29.1	135	3:30	1	34.1	47.1	65.1	90	25.8	34.0	43.6	2.0	0.53	2.1
200712-034-GP	12/07/20	340	29.2	135	3:30	2	33.6	46.5	65.3					2.4	0.53	2.2
200708-618-GP	08/07/20	345	29.0	135	3:15	2	34.2	49.1	64.5					2.3	0.54	2.2

This Report must not be reproduced except in full

The above samples were tested as received in accordance with the current terms of accreditation and methods stated in NZS 3122:2009 with the exception of:  
Chemical composition to ASTM C114-18

- Concrete Compressive Strength test results outside the scope of accreditation

# No result available at time of certificate issue  
Sample retested

Technical Manager  
Raki Harding

Date issued: 09/10/20



Portland Works, Portland, Whangarei 0178

Page 1 of 3

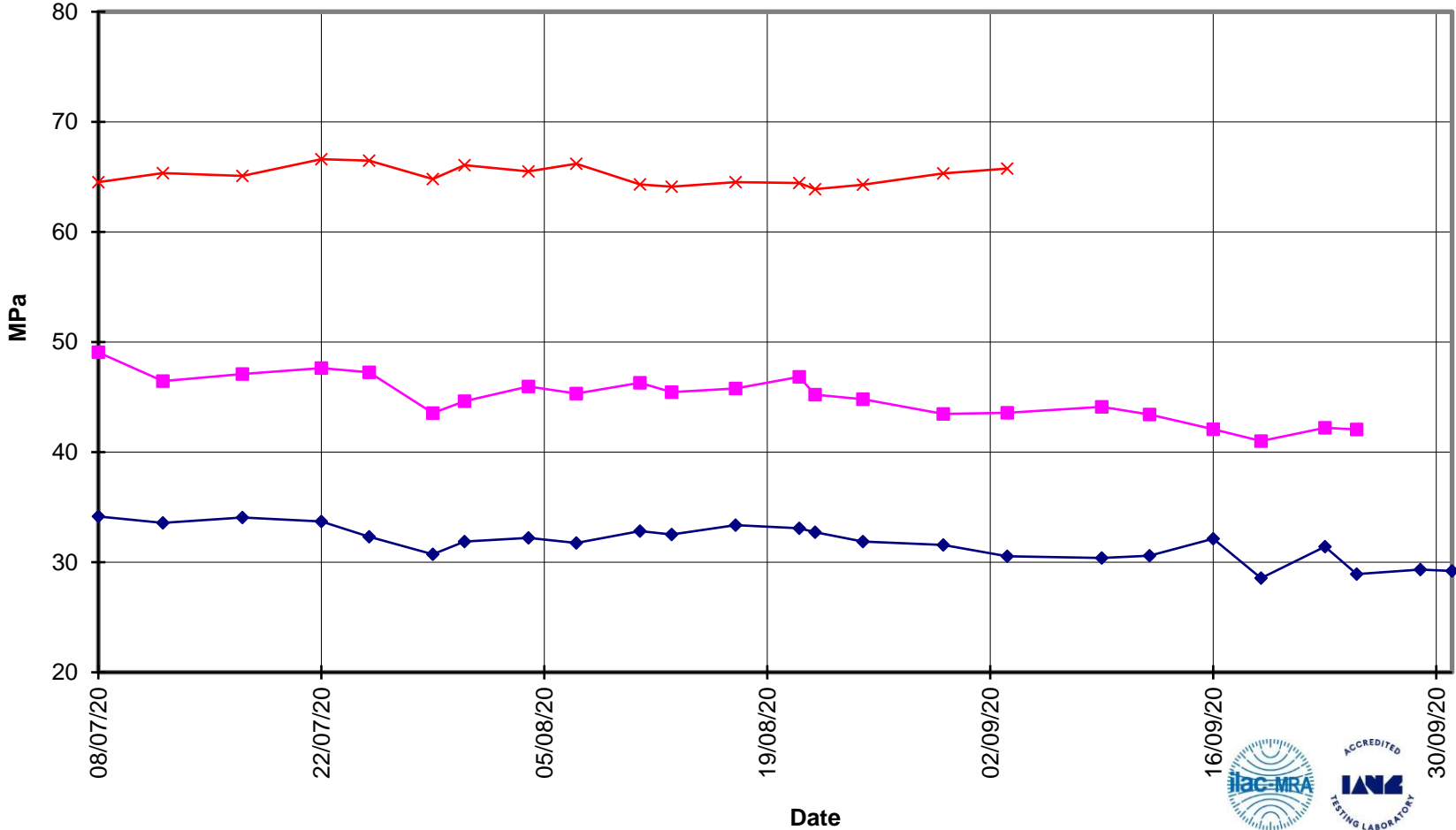


**EverSure™  
Type GP Cement**



**Compressive Strength ISO-CEN Mortar  
(Bulk Despatch)**

—x— 28 Days    —■— 7 Days    —◆— 3 Days





EverSure™  
Type GP Cement



Compressive Strength Concrete  
(Bulk Despatch)

—x— 28 Days —■— 7 Days —◆— 3 Days —■— Slump

