



# CERTIFICATE OF QUALITY

## EverSure™ Type GP Cement

NZS3122:2009 (Bulk Despatch)



Our  
NZ made  
cement is  
**genuine**  
NZ grade  
cement.

Issued to: National Sales Manager

Test Report No: 20#231

info@goldenbay.co.nz

Code	Week Ending / Voyage	Specific Surface Area	Normal Consistency	Initial Set	Final Set	Soundness	Compressive Strength						Free Lime	Sodium Equivalent (NaEq)	Sulphur Trioxide (SO3)	
							ISOCEN			Concrete						
							3 days	7 days	28 days	Slump	3 days	7 days				28 days
Mean		344	28.9	130	3:31	1	31.6	44.5	65.0	90.4	25.3	33.9	45.3	2.0	0.55	2.2
Standard Deviation		8	0.3	10	0:10	0.3	1.3	1.7	1.2	5.4	2.6	2.7	2.0	0.2	0.01	0.04
Min		320	28.4	120	3:15	1	28.6	41.0	63.5	85.0	21.0	30.2	42.4	1.5	0.54	2.1
Max		355	29.4	150	3:45	2	33.9	46.8	67.3	100.0	27.5	37.6	47.8	2.4	0.56	2.3
NZS 3122:2009 Requirements				45 min	6:00 max	5 max		35.0 min	45.0 min						0.6 max	3.5 max
Units		m2/kg	%	minutes	hrs:mins	mm	MPa	MPa	MPa	mm	MPa	MPa	MPa	%	%	%
201205-134-GP	05/12/20	350	29.4	120	3:30	1	32.8			85	27.6			1.9	0.56	2.1
201203-136-GP	03/12/20	340	29.2	120	3:30	1	32.0							1.7	0.56	2.2
201127-755-GP	27/11/20	320	29.2	135	3:45	1	32.2	45.7						1.5	0.54	2.1
201125-749-GP	25/11/20	340	29.1	120	3:30	2	31.8	45.5		90	27.6	37.4		1.7	0.56	2.2
201123-551-GP	23/11/20	345	29.1	135	3:30	1	31.8	44.3						1.8	0.54	2.2
201117-393-GP	17/11/20	355	29.1	120	3:30	1	33.9	45.4		90	28.9	37.6		1.9	0.56	2.2
201112-974-GP	12/11/20	350	29.1	135	3:15	2	32.1	45.9		85	27.5	37.0		1.8	0.55	2.2
201111-972-GP	11/11/20	345	29.4	135	3:30	1	32.0	45.6						1.9	0.55	2.2
201104-522-GP	04/11/20	340	28.9	120	3:30	1	32.2	46.6	65.9	85	26.6	34.3	46.9	1.8	0.56	2.2
201103-714-GP	03/11/20	335	29.0	120	3:30	2	32.2	45.3	66.3					1.8	0.56	2.2
201028-204-GP	28/10/20	335	29.0	135	3:45	2	32.0	46.6	66.5	85	26.9	35.2	47.8	1.9	0.55	2.2
201027-206-GP	27/10/20	345	29.0	135	3:30	2	32.3	45.6	63.9					1.8	0.56	2.2
201020-801-GP	20/10/20	350	28.9	135	3:30	1	32.6	44.3	64.5	90	24.3	32.3	46.0	2.0	0.55	2.2
201018-799-GP	18/10/20	350	28.8	120	3:30	2	32.3	46.2	66.5					2.1	0.55	2.2
201015-478-GP	15/10/20	340	28.8	120	3:30	2	32.7	46.8	67.3	90	24.5	33.6	44.2	2.4	0.55	2.2
201013-476-GP	13/10/20	350	28.8	120	3:30	2	31.5	44.9	65.5					2.1	0.55	2.2
201011-117-GP	11/10/20	345	28.5	135	3:15	2	31.7	44.9	63.5					1.7	0.55	2.2
201006-115-GP	06/10/20	345	28.4	120	3:15	1	31.2	44.3	64.8	100	23.5	33.2	43.6	1.9	0.56	2.2
201001-699-GP	01/10/20	350	28.7	150	3:45	1	29.2	43.2	63.9					2.2	0.56	2.2
200929-697-GP	29/09/20	355	28.5	150	3:15	2	29.3	42.4	63.6	95	21.8	30.2	42.4	2.1	0.56	2.3
200925-327-GP	25/09/20	345	28.8	150	3:45	2	28.9	42.0	63.6	90	23.2	32.1	47.3	2.1	0.56	2.3
200923-329-GP	23/09/20	340	28.8	135	3:45	1	31.4	42.2	64.6					2.3	0.56	2.2
200919-098-GP	19/09/20	340	28.9	135	3:45	1	28.6	41.0	65.0	100	21.0	30.3	44.3	2.2	0.55	2.2
200916-096-GP	16/09/20	345	28.9	135	3:45	1	32.1	42.1	65.4					2.3	0.56	2.2
200912-850-GP	12/09/20	335	29.0	120	3:15	1	30.6	43.4	64.5					2.3	0.55	2.2

The above samples were tested as received in accordance with the current terms of accreditation and methods stated in NZS 3122:2009 with the exception of:  
Chemical composition to ASTM C114-18

- Concrete Compressive Strength test results outside the scope of accreditation

# No result available at time of certificate issue

Sample retested

This Report must not be reproduced except in full

Technical Manager  
Raki Harding

Date issued: 11/12/20



Portland Works, Portland, Whangarei 0178

Page 1 of 3

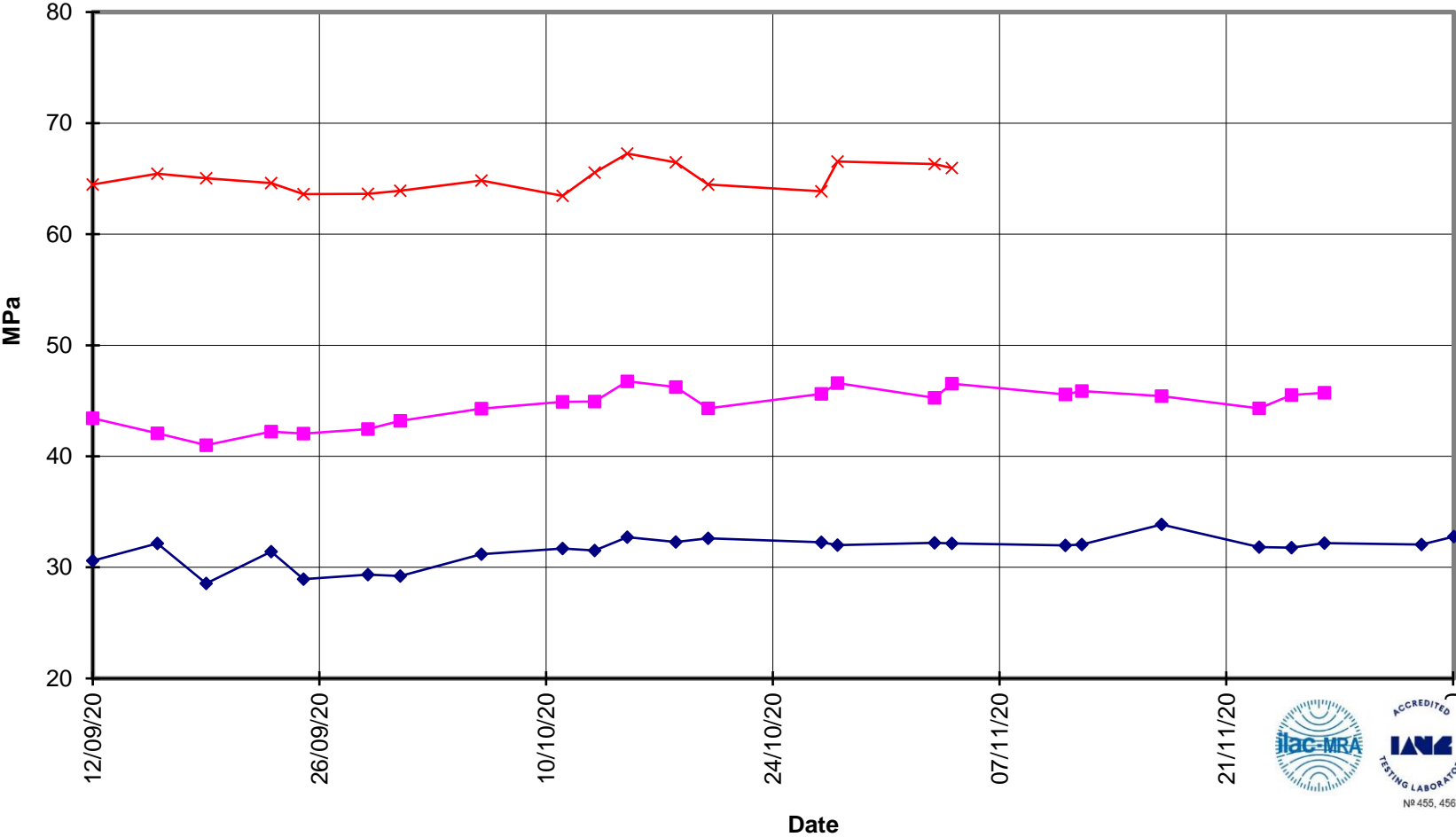


**EverSure™  
Type GP Cement**



**Compressive Strength ISO-CEN Mortar  
(Bulk Despatch)**

—x— 28 Days    —■— 7 Days    —◆— 3 Days





**EverSure™  
Type GP Cement**



**Compressive Strength Concrete  
(Bulk Despatch)**

—x— 28 Days    —■— 7 Days    —◆— 3 Days    —■— Slump

