



CERTIFICATE OF QUALITY

EverFast™ Type HE Cement

NZS 3122:2009



Our
NZ made
cement is
genuine
NZ grade
cement.

Issued to: *Technical Sales Manager*

Test Report No: 21#126

info@goldenbay.co.nz

Code	Week Ending	Specific Surface Area	Normal Consistency	Initial Set	Final Set	Soundness	Compressive Strength										Free Lime	Sodium Equivalent (NaEq)	Sulphur Trioxide (SO3)
							ISO-CEN				Concrete								
							1 Day	3 days	7 days	28 days	Slump	1 Day	3 days	7 days	28 days				
Mean		513	33.2	111	2:55	1	21.8	39.0	49.3	66.7	80.4	16.5	33.0	40.2	51.8	1.9	0.56	2.4	
Standard Deviation		16	0.3	16	0:20	0.4	1.2	2.3	2.4	1.6	4.5	2.1	1.9	2.0	1.7	0.3	0.02	0.09	
Min		490	32.6	75	2:00	0	20.2	35.7	45.5	63.9	75.0	13.3	29.7	36.3	48.7	1.4	0.51	2.3	
Max		550	33.8	135	3:30	2	24.6	44.1	54.8	70.5	90.0	21.3	37.8	43.4	55.1	2.5	0.59	2.7	
NZS 3122:2009 Requirements				45 min	6:00 max	5 max		25.0 min	40.0 min								0.6 max	3.5 max	
Units		m2/kg	%	minutes	hrs:mins	mm	Mpa	MPa	MPa	MPa	mm	Mpa	MPa	MPa	MPa	%	%	%	
210614-376-HE	14/06/21	525	32.6	105	2:45	1	20.3	36.2			80	13.3	31.2			2.3	0.54	2.4	
210601-654-HE	01/06/21	525	32.8	120	3:00	1	22.9	35.9	45.5		80	13.6	29.9	36.9		2.5	0.55	2.7	
210518-986-HE	18/05/21	500	33.0	135	3:00	1	22.1	36.8	46.4	67.7	80	14.6	32.2	43.4	52.6	2.0	*0.49	*2.6	
210502-322-HE	02/05/21	505	33.2	105	2:30	1	23.4	39.0	49.8	65.0	90	14.1	30.3	38.1	51.5	1.6	*0.49	*2.6	
210420-704-HE	20/04/21	505	33.1	120	3:00	1	20.9	37.9	48.1	67.6	90	15.2	33.1	42.2	50.1	1.6	*0.53	*1.9	
210406-974-HE	06/04/21	500	33.2	120	3:00	1	20.4	36.7	45.8	64.7	80	17.7	32.1	42.3	52.2	1.7	*0.51	*2.4	
210322-180-HE	22/03/21	530	33.3	105	3:15	1	22.5	38.7	47.6	65.9	75	17.2	33.3	41.6	51.5	1.7	0.53	2.4	
210308-448-HE	08/03/21	530	33.4	120	3:15	2	24.6	40.2	49.5	67.2	80	20.4	37.8	41.1	50.8	1.8	0.57	2.6	
210225-719-HE	25/02/21	505	33.5	120	3:00	2	24.3	41.2	53.5	66.6	80	21.3	36.3	42.3	49.7	1.7	0.54	2.4	
210211-958-HE	11/02/21	520	33.5	120	3:15	1	22.4	43.6	54.8	68.0	85	19.1	36.4	42.3	50.4	1.4	0.57	2.3	
210128-470-HE	28/01/21	490	33.5	135	3:30	1	22.9	44.1	53.5	70.5	90	15.7	32.7	39.9	48.7	1.7	0.56	2.4	
210113-181-HE	13/01/21	520	33.7	105	3:00	1	20.8	40.7	50.4	65.2	80	16.8	34.5	40.4	51.4	1.8	0.55	2.4	
201230-567-HE	30/12/20	500	33.8	120	3:15	2	22.8	39.0	50.2	66.5	80	15.9	32.5	38.7	54.6	1.9	0.57	2.4	
201217-856-HE	17/12/20	540	33.7	90	2:30	2	22.4	36.4	48.7	67.2	80	15.1	32.7	41.8	54.1	1.9	0.55	2.4	
201204-132-HE	04/12/20	495	33.0	105	3:00	1	21.1	38.7	49.7	65.2	80	16.9	34.2	39.8	51.5	2.0	0.57	2.4	
201117-404-HE	17/11/20	510	33.1	90	2:45	1	21.7	38.5	48.5	67.5	75	17.8	32.8	37.5	50.1	1.7	0.56	2.4	
201104-524-HE	04/11/20	540	33.1	90	2:30	1	21.5	40.6	51.1	65.7	80	17.0	33.8	40.2	51.2	1.8	0.56	2.4	
201020-029-HE	20/10/20	500	33.2	90	2:30	2	20.8	37.2	47.1	66.2	75	16.0	32.2	37.7	54.7	2.0	0.59	2.4	
201006-126-HE	06/10/20	500	33.2	120	3:15	2	21.1	38.3	48.5	66.5	75	16.4	31.7	39.2	52.9	2.3	0.58	2.3	
200925-331-HE	25/09/20	500	33.2	105	2:45	2	21.1	35.7	50.5	69.3	80	15.7	33.6	40.6	52.8	1.6	0.55	2.4	
200909-852-HE	09/09/20	500	33.3	75	2:00	1	20.9	40.1	48.3	68.6	80	13.4	29.7	36.3	51.1	2.0	0.59	2.4	
200827-153-HE	27/08/20	510	33.3	135	3:15	0	20.2	37.6	46.6	63.9	75	15.8	33.4	42.7	51.2	2.1	0.59	2.3	
200817-662-HE	17/08/20	510	33.4	105	3:00	2	20.7	41.6	49.4	66.7	75	19.3	32.8	40.7	52.0	1.5	0.52	2.3	
200717-316-HE	17/07/20	550	33.1	120	2:45	1	21.7	41.4	51.5	67.5	85	18.3	32.5	38.0	51.6	2.0	0.54	2.3	
200708-615-HE	08/07/20	510	33.1	120	3:00	1	20.9	38.5	47.6	63.9	80	16.2	33.0	40.3	55.1	2.1	0.51	2.4	

The above samples were tested as received in accordance with the current terms of accreditation and methods stated in NZS 3122:2009 with the exception of:

- Chemical Analysis to ASTM C114-18
- Concrete Compressive Strength test results outside the scope of accreditation

Sample retested
 -No result available at time of certificate issue
 * Tested by SpectraChem Analytical - Verum Group

This Report must not be reproduced except in full

Raki Harding
 Technical Manager



Portland Works, Portland, Whangarei 0178

Date issued: 25/06/21

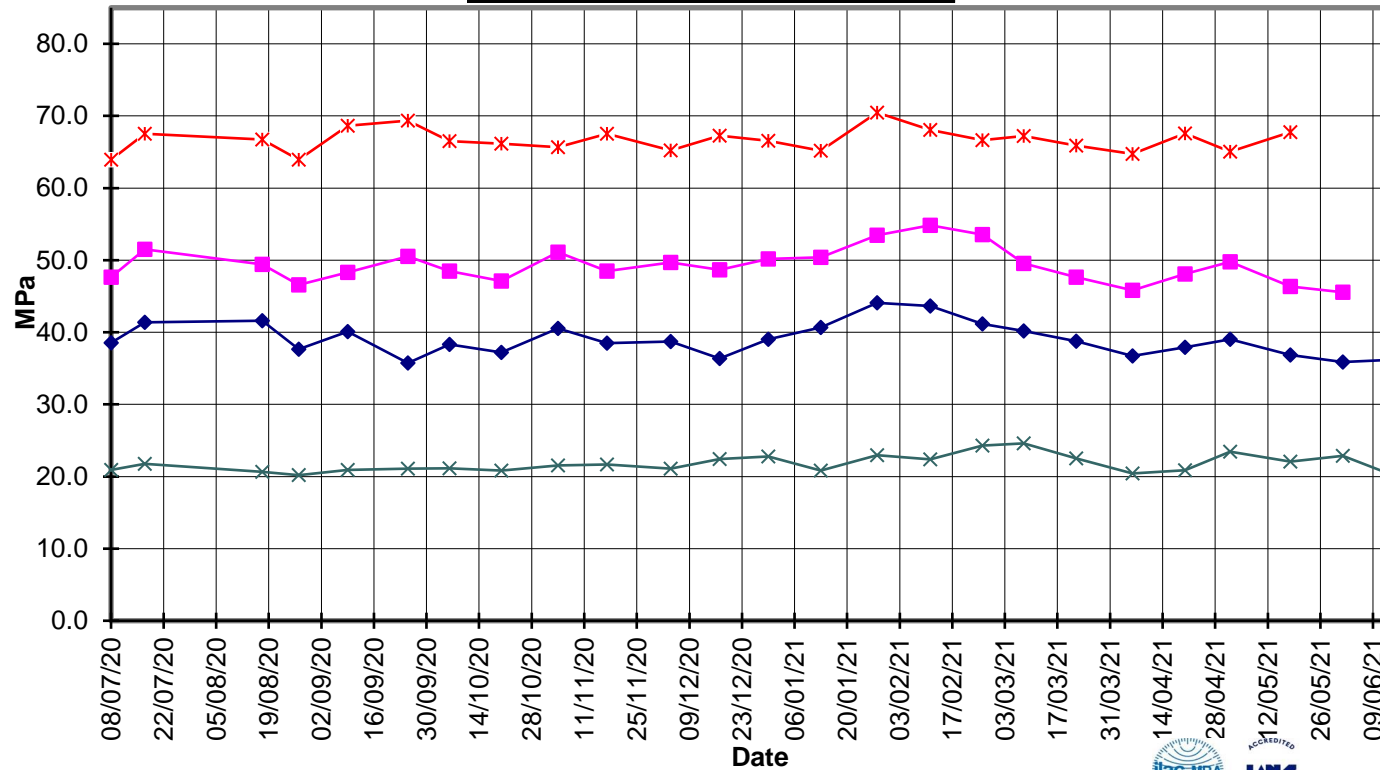
Page 1 of 3



EverFast™
Type HE Cement
Compressive Strength ISO-CEN Mortar



—x— 28 Days —■— 7 Days
—◆— 3 Days —x— 1 Day



Date issued: 25/06/21

Test Report No: 21#126



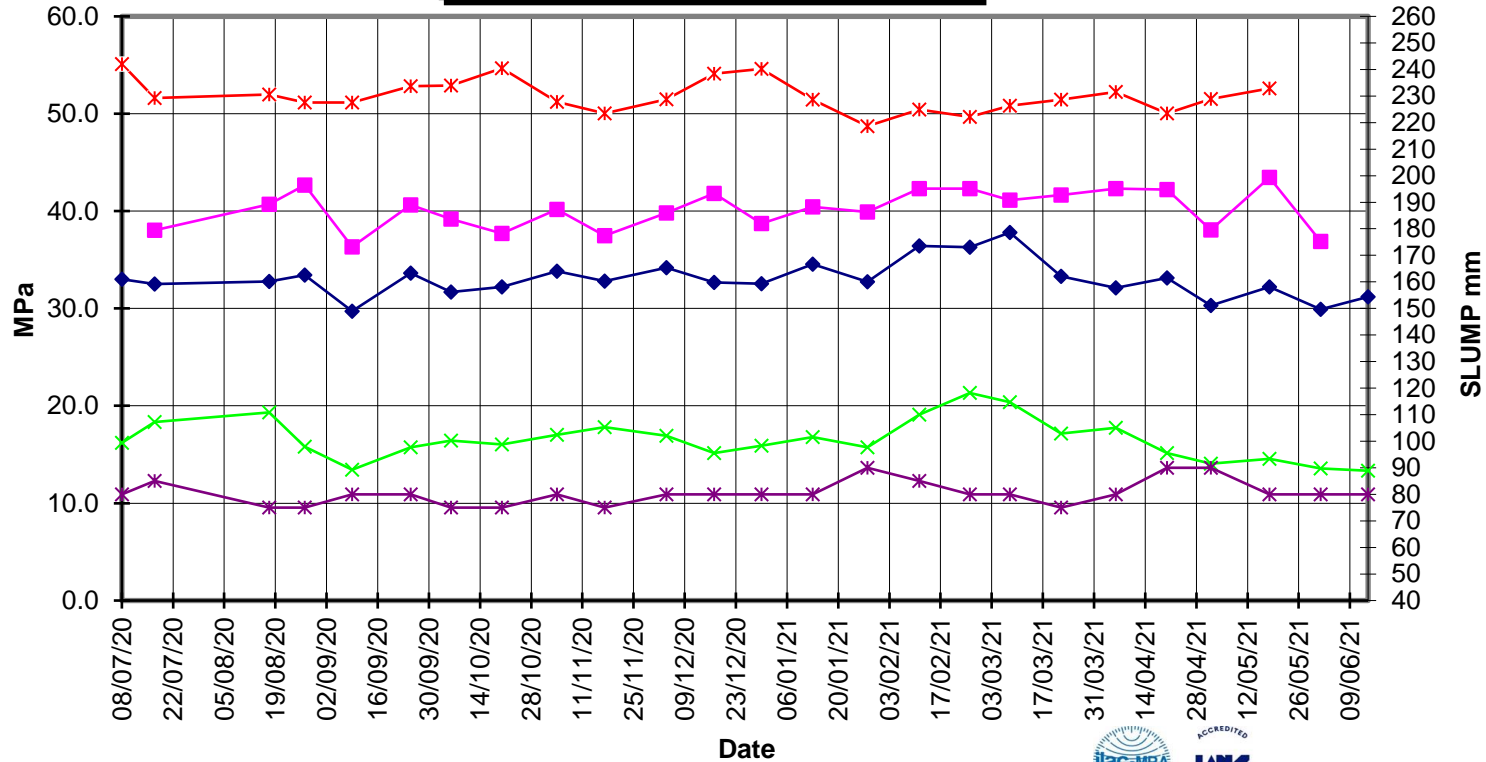


EverFast™ Type HE Cement



Compressive Strength Concrete

x 28 Days ■ 7 Days ◆ 3 Days
x 1 Day * Slump



Date issued: 25/06/21

Test Report No: 21#126

