



CERTIFICATE OF QUALITY

EverFast™ Type HE Cement

NZS 3122:2009



Our
NZ made
cement is
genuine
NZ grade
cement.

Issued to: **Technical Sales Manager**

Test Report No: **21#191**

info@goldenbay.co.nz

Code	Week Ending	Specific Surface Area	Normal Consistency	Initial Set	Final Set	Soundness	Compressive Strength										Free Lime	Sodium Equivalent (NaEq)	Sulphur Trioxide (SO3)
							ISO-CEN				Concrete								
							1 Day	3 days	7 days	28 days	Slump	1 Day	3 days	7 days	28 days				
Mean		513	33.2	110	3:00	1	22.2	38.5	48.5	66.4	84.0	15.6	32.3	39.7	51.2	1.9	0.56	2.4	
Standard Deviation		14	0.4	14	0:17	0.3	1.1	2.3	2.7	1.3	7.1	2.5	2.7	2.2	1.8	0.3	0.01	0.08	
Min		490	32.5	90	2:30	1	20.3	35.2	45.0	64.7	75.0	12.0	24.6	35.6	48.5	1.4	0.53	2.3	
Max		540	33.8	135	3:30	2	24.6	44.1	54.8	70.5	100.0	21.3	37.8	43.4	54.7	2.7	0.59	2.7	
NZS 3122:2009 Requirements				45 min	6:00 max	5 max		25.0 min	40.0 min								0.6 max	3.5 max	
Units		m2/kg	%	minutes	hrs:mins	mm	Mpa	MPa	MPa	MPa	mm	Mpa	MPa	MPa	MPa	%	%	%	
210922-521-HE	22/09/21	505	32.5	90	3:15	1	23.1	35.2	46.1		80	12.7	30.0	38.4		2.1	0.56	2.5	
210907-031-HE	07/09/21	500	32.5	120	3:15	1	22.7	36.5	47.1		100	12.5	29.1	36.5		1.9	0.56	2.4	
210824-507-HE	24/08/21	530	32.7	120	3:15	2	22.2	39.0	46.3	65.6	90	12.0	31.9	38.3	50.5	1.9	0.57	2.4	
210808-941-HE	08/08/21	515	32.9	105	3:15	1	22.5	37.7	45.0	65.2	100	13.3	24.6	35.6	48.5	2.1	0.57	2.4	
210725-285-HE	25/07/21	515	33.2	120	3:00	1	21.9	36.1	47.8	65.8	90	13.2	32.7	40.7	53.1	1.9	0.58	2.3	
210713-720-HE	13/07/21	500	33.4	105	3:15	1	22.2	36.3	46.3	65.5	90	14.4	29.2	38.2	49.0	2.0	0.57	2.4	
210701-112-HE	01/07/21	525	33.3	105	2:45	1	22.0	39.9	47.9	66.6	90	13.2	32.0	36.9	49.0	2.7	0.58	2.4	
210614-376-HE	14/06/21	525	32.6	105	2:45	1	20.3	36.2	45.7	65.4	80	13.3	31.2	40.4	52.4	2.3	0.54	2.4	
210601-654-HE	01/06/21	525	32.8	120	3:00	1	22.9	35.9	45.5	65.3	80	13.6	29.9	36.9	50.8	2.5	0.55	2.7	
210518-986-HE	18/05/21	500	33.0	135	3:00	1	22.1	36.8	46.4	67.7	80	14.6	32.2	43.4	52.6	2.0	*0.49	*2.6	
210502-322-HE	02/05/21	505	33.2	105	2:30	1	23.4	39.0	49.8	65.0	90	14.1	30.3	38.1	51.5	1.6	*0.49	*2.6	
210420-704-HE	20/04/21	505	33.1	105	3:00	1	20.9	37.9	48.1	67.6	90	15.2	33.1	42.2	50.1	1.6	*0.53	*1.9	
210406-974-HE	06/04/21	500	33.2	120	3:00	1	20.4	36.7	45.8	64.7	80	17.7	32.1	42.3	52.2	1.7	*0.51	*2.4	
210322-180-HE	22/03/21	530	33.3	105	3:15	1	22.5	38.7	47.6	65.9	75	17.2	33.3	41.6	51.5	1.7	0.53	2.4	
210308-448-HE	08/03/21	530	33.4	120	3:15	2	24.6	40.2	49.5	67.2	80	20.4	37.8	41.1	50.8	1.8	0.57	2.6	
210225-719-HE	25/02/21	505	33.5	120	3:00	2	24.3	41.2	53.5	66.6	80	21.3	36.3	42.3	49.7	1.7	0.54	2.4	
210211-958-HE	11/02/21	520	33.5	120	3:15	1	22.4	43.6	54.8	68.0	85	19.1	36.4	42.3	50.4	1.4	0.57	2.3	
210128-470-HE	28/01/21	490	33.5	135	3:30	1	22.9	44.1	53.5	70.5	90	15.7	32.7	39.9	48.7	1.7	0.56	2.4	
210113-181-HE	13/01/21	520	33.7	120	3:00	1	20.8	40.7	50.4	65.2	80	16.8	34.5	40.4	51.4	1.8	0.55	2.4	
201230-567-HE	30/12/20	500	33.8	120	3:15	2	22.8	39.0	50.2	66.5	80	15.9	32.5	38.7	54.6	1.9	0.57	2.4	
201217-856-HE	17/12/20	540	33.7	90	2:30	2	22.4	36.4	48.7	67.2	80	15.1	32.7	41.8	54.1	1.9	0.55	2.4	
201204-132-HE	04/12/20	495	33.0	105	3:00	1	21.1	38.7	49.7	65.2	80	16.9	34.2	39.8	51.5	2.0	0.57	2.4	
201117-404-HE	17/11/20	510	33.1	90	2:45	1	21.7	38.5	48.5	67.5	75	17.8	32.8	37.5	50.1	1.7	0.56	2.4	
201104-524-HE	04/11/20	540	33.1	90	2:30	1	21.5	40.6	51.1	65.7	80	17.0	33.8	40.2	51.2	1.8	0.56	2.4	
201020-029-HE	20/10/20	500	33.2	90	2:30	2	20.8	37.2	47.1	66.2	75	16.0	32.2	37.7	54.7	2.0	0.59	2.4	

The above samples were tested as received in accordance with the current terms of accreditation and methods stated in NZS 3122:2009 with the exception of:

- Chemical Analysis to ASTM C114-18
- Concrete Compressive Strength test results outside the scope of accreditation

Sample retested
 # -No result available at time of certificate issue
 * Tested by SpectraChem Analytical - Verum Group

This Report must not be reproduced except in full

Raki Harding
Technical Manager



Portland Works, Portland, Whangarei 0178

Date issued: 07/10/21

Page 1 of 3

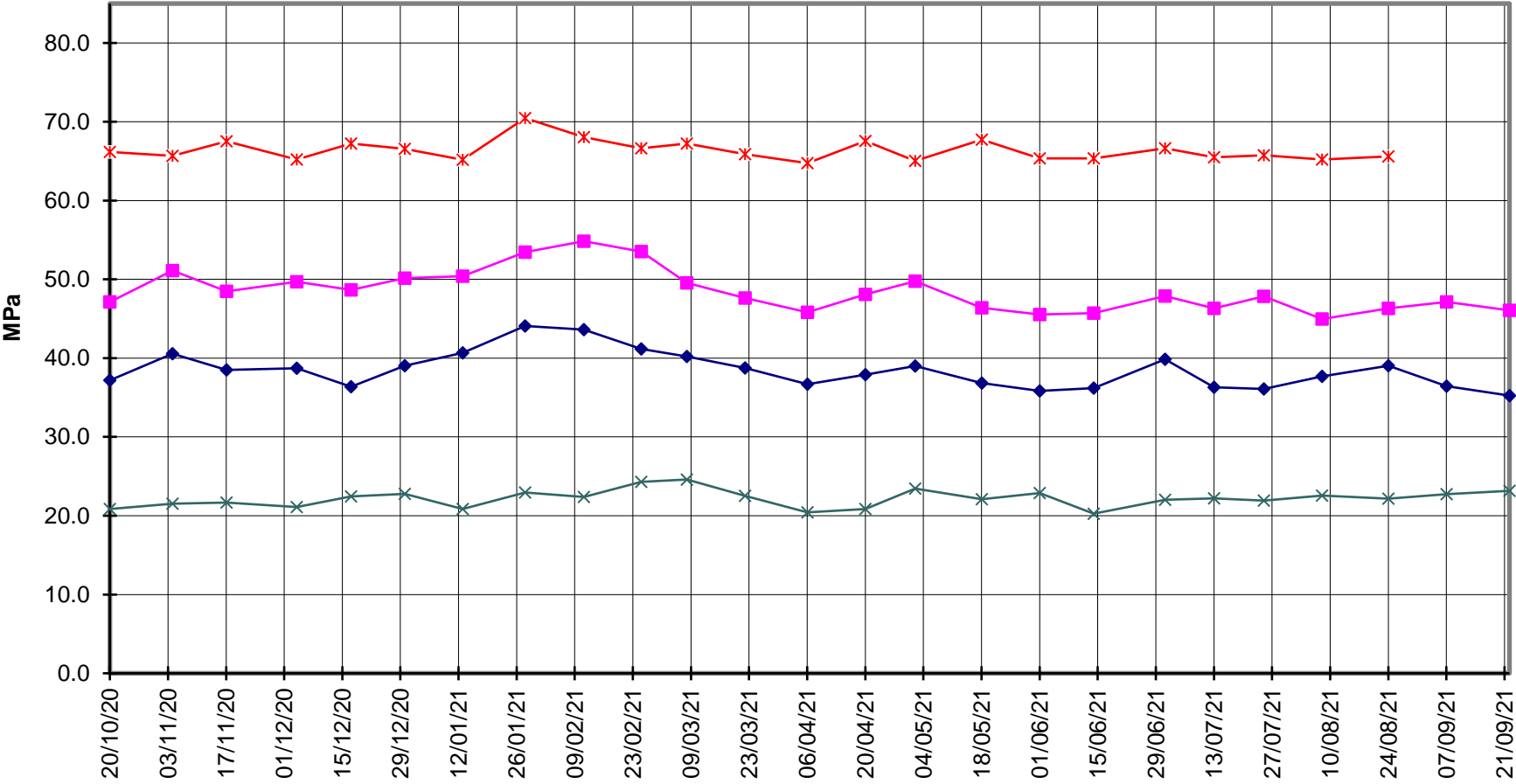


EverFast™ Type HE Cement



Compressive Strength ISO-CEN Mortar

—x— 28 Days —■— 7 Days —◆— 3 Days —x— 1 Day





EverFast™ Type HE Cement



Compressive Strength Concrete

