



CERTIFICATE OF QUALITY

EverSure™ Type GP Cement

NZS3122:2009 (Bulk Despatch)



Our
NZ made
cement is
genuine
NZ grade
cement.

Issued to: National Sales Manager

Test Report No: 21#38

info@goldenbay.co.nz

Code	Week Ending / Voyage	Specific Surface Area	Normal Consistency	Initial Set	Final Set	Soundness	Compressive Strength						Free Lime	Sodium Equivalent (NaEq)	Sulphur Trioxide (SO3)	
							ISOCEN			Concrete						
							3 days	7 days	28 days	Slump	3 days	7 days				28 days
Mean		333	29.1	131	3:32	1	32.5	45.8	65.0	88.2	27.4	35.9	46.8	1.8	0.55	2.2
Standard Deviation		12	0.1	10	0:05	0.4	0.8	1.1	0.6	4.2	1.1	1.2	1.6	0.2	0.01	0.04
Min		315	28.9	120	3:30	0	31.5	44.0	64.0	80.0	26.0	33.6	44.3	1.4	0.53	2.1
Max		355	29.4	150	3:45	2	34.3	48.2	66.4	95.0	28.9	37.6	50.1	2.1	0.58	2.3
NZS 3122:2009 Requirements				45 min	6:00 max	5 max		35.0 min	45.0 min						0.6 max	3.5 max
Units		m2/kg	%	minutes	hrs:mins	mm	MPa	MPa	MPa	mm	MPa	MPa	MPa	%	%	%
210219-349-GP	19/02/21	330	29.0	135	3:30	0	32.3							2.0	0.53	2.2
210216-345-GP	16/02/21	320	29.0	135	3:30	0	31.8			80	28.0			1.8	0.53	2.2
210211-940-GP	11/02/21	330	29.0	135	3:30	2	33.9	45.4		95	27.8	37.6		1.4	0.55	2.3
210205-824-GP	05/02/21	335	28.9	120	3:30	1	32.8	48.2						1.4	0.56	2.2
210202-663-GP	02/02/21	320	28.9	120	3:30	1	33.1	46.1		85	29.7	35.5		1.7	0.56	2.3
210130-471-GP	30/01/21	340	29.0	150	3:30	2	32.8	45.5		90	26.0	35.9		1.7	0.56	2.2
210128-468-GP	28/01/21	315	28.9	150	3:45	1	32.3	46.0						1.7	0.57	2.1
210121-280-GP	21/01/21	325	29.1	135	3:30	1	31.7	44.4	65.7	85	27.6	33.8	46.3	1.7	0.56	2.2
210117-186-GP	17/01/21	320	29.1	150	3:30	0	31.8	46.7	64.3					1.7	0.54	2.2
210113-179-GP	13/01/21	325	29.1	135	3:30	1	32.5	46.5	66.1	85	27.1	36.6	47.1	1.7	0.55	2.2
210109-074-GP	09/01/21	315	29.2	135	3:30	1	31.5	44.0	66.4					1.8	0.56	2.1
210106-072-GP	06/01/21	345	29.3	135	3:30	1	31.8	44.3	64.7	85	26.4	35.7	45.6	1.9	0.56	2.2
201230-565-GP	30/12/20	325	29.3	135	3:30	2	33.0	45.0	65.3	90	27.0	36.3	50.1	1.9	0.56	2.2
201224-222-GP	24/12/20	330	29.3	135	3:45	2	32.4	46.4	64.9					1.8	0.56	2.2
201219-163-GP	19/12/20	340	29.2	135	3:30	2	34.3	46.3	64.6	95	26.1	35.3	47.4	2.0	0.58	2.2
201217-853-GP	17/12/20	350	29.4	120	3:30	2	32.1	45.7	64.8					1.7	0.57	2.2
201210-851-GP	10/12/20	355	29.3	120	3:30	1	31.7	45.3	64.3	90	26.1	33.6	44.3	1.9	0.57	2.2
201209-470-GP	09/12/20	325	29.4	120	3:30	1	33.9	47.8	64.9					2.1	0.56	2.2
201207-468-GP	07/12/20	330	29.2	120	3:45	1	32.3	45.7	64.9	90	28.3	35.7	45.3	1.9	0.56	2.2
201205-134-GP	05/12/20	350	29.4	120	3:30	1	32.8	46.7	65.0	85	27.6	35.5	47.3	1.9	0.56	2.1
201203-136-GP	03/12/20	340	29.2	120	3:30	1	32.0	47.4	64.8					1.7	0.56	2.2
201127-755-GP	27/11/20	320	29.2	135	3:45	1	32.2	45.7	65.3					1.5	0.54	2.1
201125-749-GP	25/11/20	340	29.1	120	3:30	2	31.8	45.5	64.0	90	27.6	37.4	47.8	1.7	0.56	2.2
201123-551-GP	23/11/20	345	29.1	135	3:30	1	31.8	44.3	65.3					1.8	0.54	2.2
201117-393-GP	17/11/20	355	29.1	120	3:30	1	33.9	45.4	65.2	90	28.9	37.6	46.2	1.9	0.56	2.2

This Report must not be reproduced except in full

The above samples were tested as received in accordance with the current terms of accreditation and methods stated in NZS 3122:2009 with the exception of:

Chemical composition to ASTM C114-18

- Concrete Compressive Strength test results outside the scope of accreditation

No result available at time of certificate issue

Sample retested

Technical Manager
Raki Harding

Date issued: 26/02/21



Portland Works, Portland, Whangarei 0178

Page 1 of 3

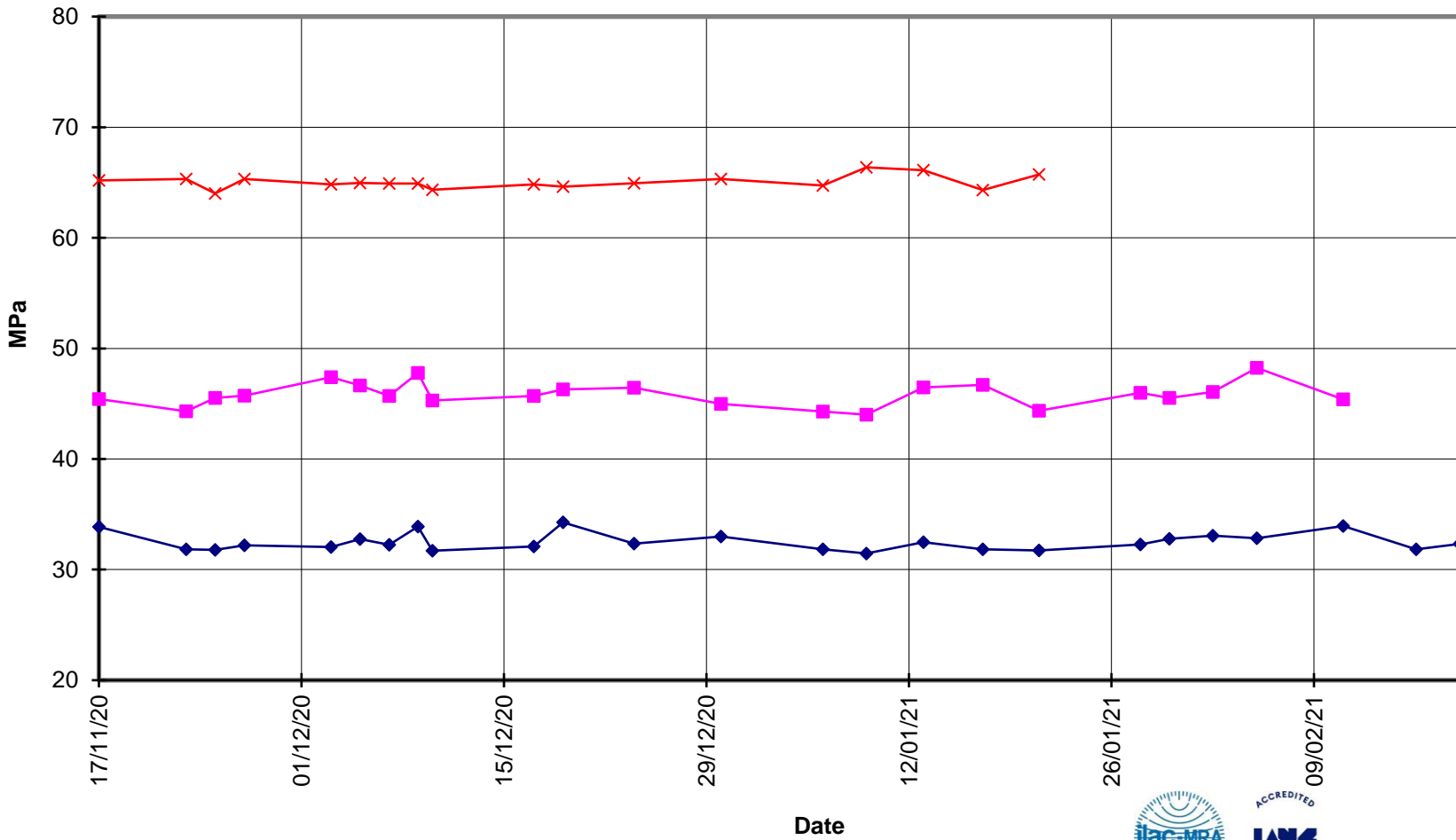


**EverSure™
Type GP Cement**



**Compressive Strength ISO-CEN Mortar
(Bulk Despatch)**

—x— 28 Days —■— 7 Days —◆— 3 Days





EverSure™
Type GP Cement



Compressive Strength Concrete
(Bulk Despatch)

—x— 28 Days —■— 7 Days —◆— 3 Days —■— Slump

