



CERTIFICATE OF QUALITY

EverSure™ Type GP Cement

NZS3122:2009 (Bulk Despatch)



Issued to: National Sales Manager

Test Report No: 21#62

info@goldenbay.co.nz

Code	Week Ending / Voyage	Specific Surface Area	Normal Consistency	Initial Set	Final Set	Soundness	Compressive Strength						Free Lime	Sodium Equivalent (NaEq)	Sulphur Trioxide (SO3)	
							ISOCEN			Slump	Concrete					
							3 days	7 days	28 days		3 days	7 days				28 days
Mean		335	29.1	135	3:31	1	32.4	45.8	65.9	86.8	27.4	35.6	46.9	1.7	0.55	2.2
Standard Deviation		13	0.2	10	0:06	0.5	0.8	1.1	1.2	4.6	1.6	1.5	1.9	0.1	0.01	0.04
Min		315	28.8	120	3:15	0	31.3	43.6	64.3	80.0	25.2	33.6	44.3	1.4	0.53	2.1
Max		360	29.4	150	3:45	2	34.3	48.2	68.1	95.0	31.2	38.5	50.1	2.0	0.58	2.3
NZS 3122:2009 Requirements				45 min	6:00 max	5 max		35.0 min	45.0 min						0.6 max	3.5 max
Units		m2/kg	%	minutes	hrs:mins	mm	MPa	MPa	MPa	mm	MPa	MPa	MPa	%	%	%
210319-803-GP	19/03/21	335	28.9	120	3:30	1	31.4			85	27.9			1.5	0.53	2.3
210315-805-GP	15/03/21	330	28.8	135	3:30	1	31.5							1.6	0.55	2.2
210311-450-GP	11/03/21	350	28.9	135	3:45	2	32.2	43.6						1.8	0.53	2.2
210308-446-GP	08/03/21	355	28.9	135	3:30	2	33.3	45.5		85	27.0	35.1		1.7	0.55	2.2
210305-149-GP	05/03/21	360	29.0	135	3:15	1	31.3	45.9		85	25.2	33.6		1.8	0.55	2.2
210303-146-GP	03/03/21	355	29.0	150	3:30	1	32.8	45.4						1.9	0.53	2.2
210228-737-GP	28/02/21	335	29.0	150	3:45	0	32.1	46.4		80	31.2	38.5		1.7	0.54	2.2
210225-717-GP	25/02/21	335	29.0	135	3:30	2	33.6	48.2						1.9	0.56	2.3
210219-349-GP	19/02/21	330	29.0	135	3:30	0	32.3	45.5	67.0					2.0	0.53	2.2
210216-345-GP	16/02/21	320	29.0	135	3:30	0	31.8	46.6	65.1	80	28.0	35.5	48.0	1.8	0.53	2.2
210211-940-GP	11/02/21	330	29.0	135	3:30	2	33.9	45.4	67.5	95	27.8	37.6	49.2	1.4	0.55	2.3
210205-824-GP	05/02/21	335	28.9	120	3:30	1	32.8	48.2	68.1					1.4	0.56	2.2
210202-663-GP	02/02/21	320	28.9	120	3:30	1	33.1	46.1	67.2	85	29.7	35.5	46.8	1.7	0.56	2.3
210130-471-GP	30/01/21	340	29.0	150	3:30	2	32.8	45.5	66.8	90	26.0	35.9	44.5	1.7	0.56	2.2
210128-468-GP	28/01/21	315	28.9	150	3:45	1	32.3	46.0	66.7					1.7	0.57	2.1
210121-280-GP	21/01/21	325	29.1	135	3:30	1	31.7	44.4	65.7	85	27.6	33.8	46.3	1.7	0.56	2.2
210117-186-GP	17/01/21	320	29.1	150	3:30	0	31.8	46.7	64.3					1.7	0.54	2.2
210113-179-GP	13/01/21	325	29.1	135	3:30	1	32.5	46.5	66.1	85	27.1	36.6	47.1	1.7	0.55	2.2
210109-074-GP	09/01/21	315	29.2	135	3:30	1	31.5	44.0	66.4					1.8	0.56	2.1
210106-072-GP	06/01/21	345	29.3	135	3:30	1	31.8	44.3	64.7	85	26.4	35.7	45.6	1.9	0.56	2.2
201230-565-GP	30/12/20	325	29.3	135	3:30	2	33.0	45.0	65.3	90	27.0	36.3	50.1	1.9	0.56	2.2
201224-222-GP	24/12/20	330	29.3	135	3:45	2	32.4	46.4	64.9					1.8	0.56	2.2
201219-163-GP	19/12/20	340	29.2	135	3:30	2	34.3	46.3	64.6	95	26.1	35.3	47.4	2.0	0.58	2.2
201217-853-GP	17/12/20	350	29.4	120	3:30	2	32.1	45.7	64.8					1.7	0.57	2.2
201210-851-GP	10/12/20	355	29.3	120	3:30	1	31.7	45.3	64.3	90	26.1	33.6	44.3	1.9	0.57	2.2

This Report must not be reproduced except in full

The above samples were tested as received in accordance with the current terms of accreditation and methods stated in NZS 3122:2009 with the exception of:

Chemical composition to ASTM C114-18

- Concrete Compressive Strength test results outside the scope of accreditation

Sample retested

No result available at time of certificate issue

Raki Harding
Technical Manager

Date issued: 26/03/2021



Portland Works, Portland, Whangarei 0178

Page 1 of 3

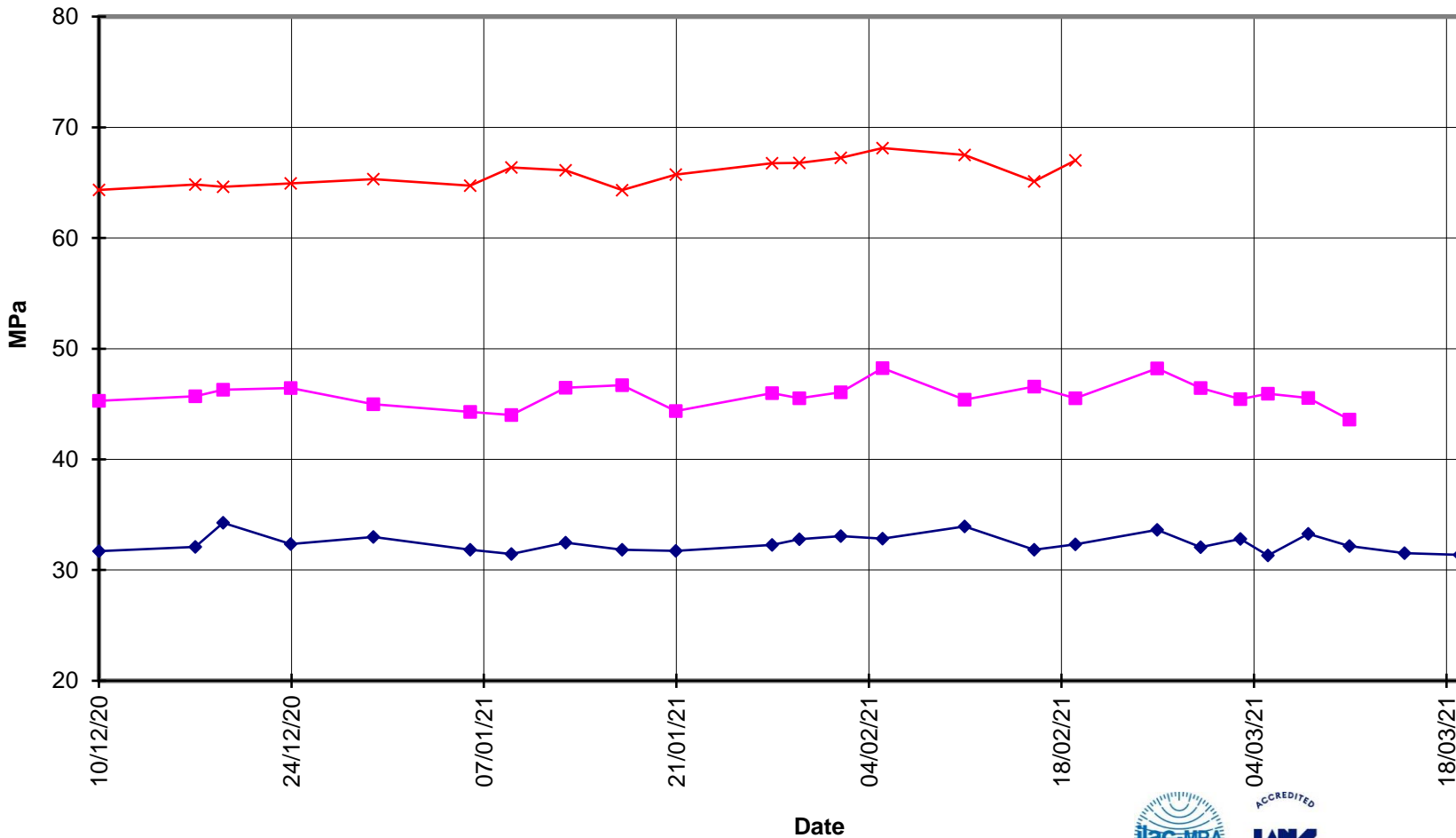


**EverSure™
Type GP Cement**



**Compressive Strength ISO-CEN Mortar
(Bulk Despatch)**

—x— 28 Days —■— 7 Days —◆— 3 Days





**EverSure™
Type GP Cement**

**Compressive Strength Concrete
(Bulk Despatch)**



—x— 28 Days —■— 7 Days —◆— 3 Days —■— Slump

