



CERTIFICATE OF QUALITY

EverSure™ Type GP Cement

NZS3122:2009 (Bulk Despatch)



Issued to: National Sales Manager

Test Report No: 21#63

info@goldenbay.co.nz

Code	Week Ending / Voyage	Specific Surface Area	Normal Consistency	Initial Set	Final Set	Soundness	Compressive Strength						Free Lime	Sodium Equivalent (NaEq)	Sulphur Trioxide (SO3)	
							ISOCEN			Concrete						
							3 days	7 days	28 days	Slump	3 days	7 days				28 days
Mean		334	29.0	136	3:31	1	32.4	45.7	66.1	86.8	27.4	35.9	47.0	1.7	0.55	2.2
Standard Deviation		13	0.1	9	0:07	0.5	0.9	1.2	1.2	4.6	1.6	1.4	1.7	0.1	0.01	0.04
Min		315	28.8	120	3:15	0	31.1	43.6	64.3	80.0	25.2	33.6	44.5	1.4	0.53	2.1
Max		360	29.3	150	3:45	2	34.3	48.2	68.1	95.0	31.2	38.5	50.1	2.0	0.58	2.3
NZS 3122:2009 Requirements				45 min	6:00 max	5 max		35.0 min	45.0 min						0.6 max	3.5 max
Units		m2/kg	%	minutes	hrs:mins	mm	MPa	MPa	MPa	mm	MPa	MPa	MPa	%	%	%
210327-181-GP	27/03/21	345	28.9	135	3:30	1	31.1							1.9	0.54	2.2
210322-178-GP	22/03/21	340	28.8	120	3:15	1	31.4			90	26.0			1.7	0.55	2.2
210319-803-GP	19/03/21	335	28.9	120	3:30	1	31.4	45.0		85	27.9	37.2		1.5	0.53	2.3
210315-805-GP	15/03/21	330	28.8	135	3:30	1	31.5	44.8						1.6	0.55	2.2
210311-450-GP	11/03/21	350	28.9	135	3:45	2	32.2	43.6						1.8	0.53	2.2
210308-446-GP	08/03/21	355	28.9	135	3:30	2	33.3	45.5		85	27.0	35.1		1.7	0.55	2.2
210305-149-GP	05/03/21	360	29.0	135	3:15	1	31.3	45.9		85	25.2	33.6		1.8	0.55	2.2
210303-146-GP	03/03/21	355	29.0	150	3:30	1	32.8	45.4						1.9	0.53	2.2
210228-737-GP	28/02/21	335	29.0	150	3:45	0	32.1	46.4	65.2	80	31.2	38.5	45.5	1.7	0.54	2.2
210225-717-GP	25/02/21	335	29.0	135	3:30	2	33.6	48.2	68.0					1.9	0.56	2.3
210219-349-GP	19/02/21	330	29.0	135	3:30	0	32.3	45.5	67.0					2.0	0.53	2.2
210216-345-GP	16/02/21	320	29.0	135	3:30	0	31.8	46.6	65.1	80	28.0	35.5	48.0	1.8	0.53	2.2
210211-940-GP	11/02/21	330	29.0	135	3:30	2	33.9	45.4	67.5	95	27.8	37.6	49.2	1.4	0.55	2.3
210205-824-GP	05/02/21	335	28.9	120	3:30	1	32.8	48.2	68.1					1.4	0.56	2.2
210202-663-GP	02/02/21	320	28.9	120	3:30	1	33.1	46.1	67.2	85	29.7	35.5	46.8	1.7	0.56	2.3
210130-471-GP	30/01/21	340	29.0	150	3:30	2	32.8	45.5	66.8	90	26.0	35.9	44.5	1.7	0.56	2.2
210128-468-GP	28/01/21	315	28.9	150	3:45	1	32.3	46.0	66.7					1.7	0.57	2.1
210121-280-GP	21/01/21	325	29.1	135	3:30	1	31.7	44.4	65.7	85	27.6	33.8	46.3	1.7	0.56	2.2
210117-186-GP	17/01/21	320	29.1	150	3:30	0	31.8	46.7	64.3					1.7	0.54	2.2
210113-179-GP	13/01/21	325	29.1	135	3:30	1	32.5	46.5	66.1	85	27.1	36.6	47.1	1.7	0.55	2.2
210109-074-GP	09/01/21	315	29.2	135	3:30	1	31.5	44.0	66.4					1.8	0.56	2.1
210106-072-GP	06/01/21	345	29.3	135	3:30	1	31.8	44.3	64.7	85	26.4	35.7	45.6	1.9	0.56	2.2
201230-565-GP	30/12/20	325	29.3	135	3:30	2	33.0	45.0	65.3	90	27.0	36.3	50.1	1.9	0.56	2.2
201224-222-GP	24/12/20	330	29.3	135	3:45	2	32.4	46.4	64.9					1.8	0.56	2.2
201219-163-GP	19/12/20	340	29.2	135	3:30	2	34.3	46.3	64.6	95	26.1	35.3	47.4	2.0	0.58	2.2

This Report must not be reproduced except in full



Portland Works, Portland, Whangarei 0178

The above samples were tested as received in accordance with the current terms of accreditation and methods stated in NZS 3122:2009 with the exception of:

Chemical composition to ASTM C114-18

- Concrete Compressive Strength test results outside the scope of accreditation

Sample retested

No result available at time of certificate issue

Raki Harding
Technical Manager

Date issued: 1/04/2021

Page 1 of 3

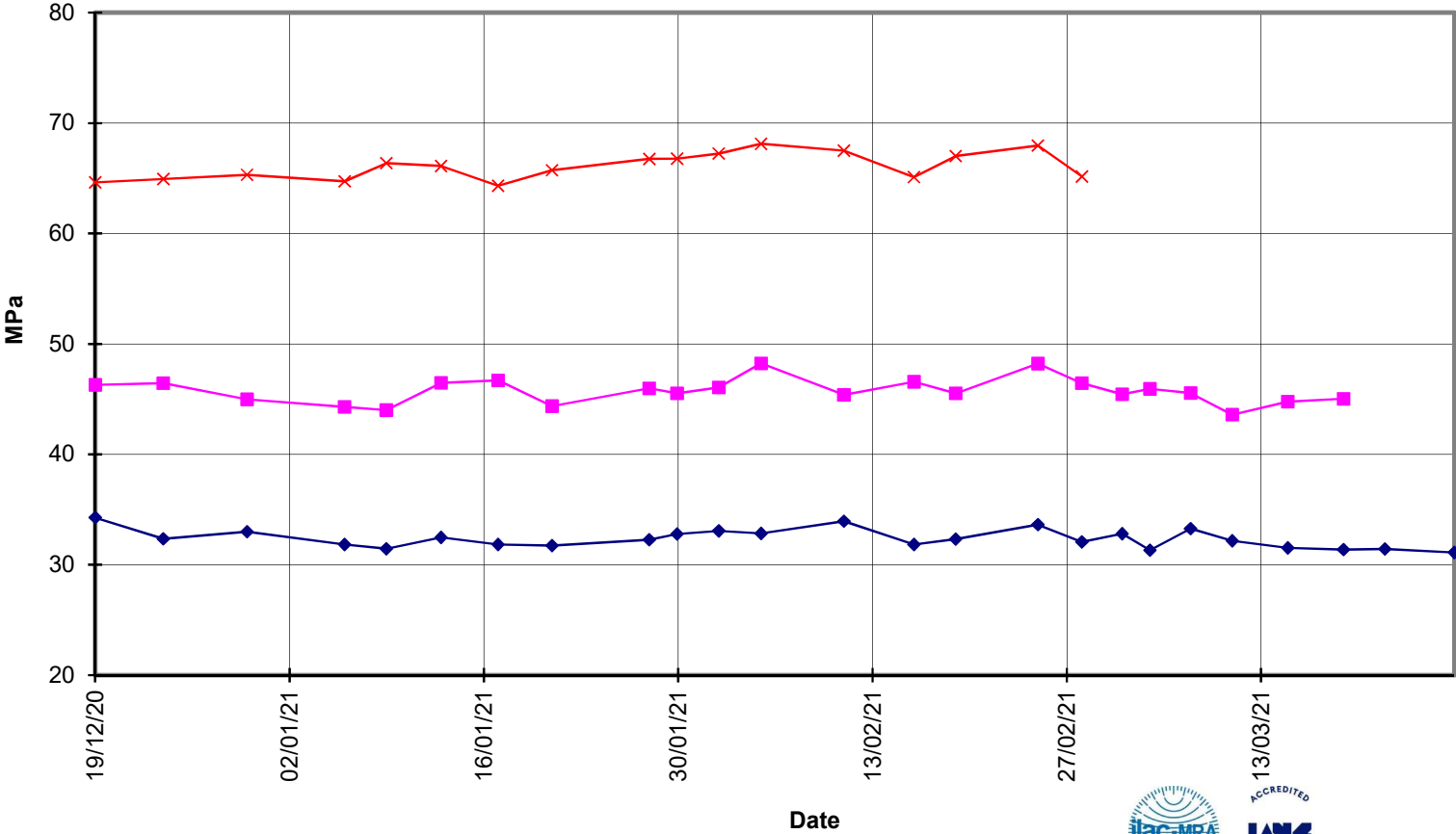


**EverSure™
Type GP Cement**



**Compressive Strength ISO-CEN Mortar
(Bulk Despatch)**

—x— 28 Days —■— 7 Days —◆— 3 Days





**EverSure™
Type GP Cement**



**Compressive Strength Concrete
(Bulk Despatch)**

—x— 28 Days —■— 7 Days —◆— 3 Days —■— Slump

