



# CERTIFICATE OF QUALITY

## EverSure™ Type GP Cement

NZS3122:2009 (Bulk Despatch)



Our  
NZ made  
cement is  
**genuine**  
NZ grade  
cement.

Issued to: National Sales Manager

Test Report No: 22#13

info@goldenbay.co.nz

| Code                       | Week Ending / Voyage | Specific Surface Area | Normal Consistency | Initial Set | Final Set | Soundness | Compressive Strength |          |          |          |        |        |         | Free Lime | Sodium Equivalent (NaEq) | Sulphur Trioxide (SO3) |
|----------------------------|----------------------|-----------------------|--------------------|-------------|-----------|-----------|----------------------|----------|----------|----------|--------|--------|---------|-----------|--------------------------|------------------------|
|                            |                      |                       |                    |             |           |           | ISOCEN               |          |          | Concrete |        |        |         |           |                          |                        |
|                            |                      |                       |                    |             |           |           | 3 days               | 7 days   | 28 days  | Slump    | 3 days | 7 days | 28 days |           |                          |                        |
| Mean                       |                      | 333                   | 28.8               | 136         | 3:32      | 1         | 30.8                 | 42.4     | 64.4     | 93       | 22.0   | 32.2   | 45.6    | 1.8       | 0.56                     | 2.3                    |
| Standard Deviation         |                      | 10                    | 0.5                | 10          | 0:08      | 0         | 1.0                  | 1.2      | 1.0      | 8        | 2.0    | 3.0    | 2.4     | 0.2       | 0.01                     | 0.08                   |
| Min                        |                      | 310                   | 28.2               | 120         | 3:15      | 1         | 28.8                 | 39.8     | 63.3     | 80       | 20.2   | 26.5   | 42.0    | 1.5       | 0.54                     | 2.2                    |
| Max                        |                      | 350                   | 30.4               | 150         | 3:45      | 2         | 32.7                 | 44.8     | 67.0     | 100      | 25.4   | 36.0   | 49.6    | 2.2       | 0.58                     | 2.4                    |
| NZS 3122:2009 Requirements |                      |                       |                    | 45 min      | 6:00 max  | 5 max     |                      | 35.0 min | 45.0 min |          |        |        |         |           | 0.6 max                  | 3.5 max                |
| Units                      |                      | m2/kg                 | %                  | minutes     | hrs:mins  | mm        | MPa                  | MPa      | MPa      | mm       | MPa    | MPa    | MPa     | %         | %                        | %                      |
| 220214-907-GP              | 10/02/22             | 340                   | 30.4               | 120         | 3:45      | 1         | 32.7                 |          |          |          |        |        |         | 1.7       | 0.55                     | 2.4                    |
| 220214-906-GP              | 08/02/22             | 335                   | 29.0               | 120         | 3:30      | 1         | 32.0                 |          |          | 100      | 20.2   |        |         | 1.8       | 0.54                     | 2.4                    |
| 220206-419-GP              | 06/02/22             | 340                   | 29.2               | 135         | 3:45      | 1         | 31.8                 | 43.4     |          |          |        |        |         | 1.6       | 0.54                     | 2.4                    |
| 220204-417-GP              | 04/02/22             | 335                   | 29.1               | 150         | 3:45      | 1         | 30.7                 | 43.1     |          | 80       | 25.6   | 34.6   |         | 1.6       | 0.56                     | 2.4                    |
| 220129-097-GP              | 29/01/22             | 330                   | 29.1               | 135         | 3:45      | 1         | 30.6                 | 42.9     |          | 100      | 20.7   | 26.5   |         | 1.8       | 0.55                     | 2.4                    |
| 220126-095-GP              | 26/01/22             | 325                   | 29.1               | 135         | 3:30      | 1         | 30.8                 | 43.4     |          |          |        |        |         | 1.6       | 0.56                     | 2.3                    |
| 220120-744-GP              | 20/01/22             | 335                   | 28.6               | 120         | 3:15      | 2         | 30.3                 | 43.1     |          | 90       | 24.3   | 36.0   |         | 2.1       | *0.53                    | *2.3                   |
| 220119-742-GP              | 19/01/22             | 340                   | 28.4               | 120         | 3:30      | 1         | 31.8                 | 43.9     |          |          |        |        |         | 1.8       | *0.52                    | *2.4                   |
| 220114-472-GP              | 14/01/22             | 340                   | 28.4               | 135         | 3:30      | 2         | 30.7                 | 43.3     |          | 90       | 20.2   | 32.3   | 45.4    | 1.9       | *0.53                    | *2.2                   |
| 220109-465-GP              | 09/01/22             | 350                   | 28.3               | 150         | 3:30      | 1         | 30.4                 | 41.3     |          |          |        |        |         | 1.7       | *0.55                    | *2.3                   |
| 220106-870-GP              | 06/01/22             | 320                   | 28.6               | 150         | 3:30      | 1         | 30.8                 | 42.6     | 64.2     |          |        |        |         | 1.6       | 0.55                     | 2.2                    |
| 220102-868-GP              | 02/01/22             | 310                   | 28.5               | 135         | 3:30      | 1         | 31.3                 | 42.5     | 63.7     |          |        |        |         | 1.5       | 0.54                     | 2.2                    |
| 211229-866-GP              | 29/12/21             | 340                   | 28.4               | 135         | 3:30      | 1         | 31.3                 | 42.1     | 63.4     | 100      | 21.1   | 31.1   | 43.2    | 1.6       | 0.56                     | 2.2                    |
| 211226-864-GP              | 26/12/21             | 340                   | 28.6               | 135         | 3:30      | 1         | 31.7                 | 42.9     | 64.0     | 100      | 20.8   | 31.2   | 42.0    | 1.7       | 0.56                     | 2.2                    |
| 211221-856-GP              | 21/12/21             | 325                   | 28.3               | 135         | 3:30      | 1         | 32.6                 | 44.8     | 66.0     |          |        |        |         | 1.6       | 0.57                     | 2.2                    |
| 211219-854-GP              | 19/12/21             | 325                   | 28.4               | 135         | 3:30      | 1         | 31.0                 | 42.5     | 63.8     | 90       | 20.5   | 33.4   | 46.5    | 1.6       | 0.55                     | 2.2                    |
| 211217-592-GP              | 17/12/21             | 325                   | 28.2               | 150         | 3:45      | 1         | 28.8                 | 40.1     | 63.8     |          |        |        |         | 2.2       | 0.58                     | 2.3                    |
| 211211-594-GP              | 11/12/21             | 330                   | 28.2               | 150         | 3:30      | 1         | 29.7                 | 43.1     | 67.0     | 90       | 22.1   | 35.8   | 49.6    | 2.2       | 0.56                     | 2.2                    |
| 211209-311-GP              | 09/12/21             | 345                   | 29.2               | 150         | 3:45      | 1         | 30.0                 | 41.1     | 63.9     |          |        |        |         | 2.1       | 0.57                     | 2.2                    |
| 211206-309-GP              | 06/12/21             | 340                   | 29.2               | 135         | 3:30      | 1         | 30.4                 | 42.4     | 64.2     | 90       | 21.5   | 31.1   | 47.2    | 2.1       | 0.58                     | 2.2                    |
| 211202-965-GP              | 02/12/21             | 325                   | 28.8               | 135         | 3:30      | 1         | 31.1                 | 42.5     | 63.3     |          |        |        |         | 1.9       | 0.55                     | 2.2                    |
| 211130-963-GP              | 30/11/21             | 320                   | 28.9               | 135         | 3:30      | 1         | 29.1                 | 41.0     | 64.9     | 100      | 21.7   | 28.1   | 44.5    | 2.1       | 0.55                     | 2.2                    |
| 211125-592-GP              | 25/11/21             | 330                   | 29.0               | 135         | 3:15      | 2         | 29.2                 | 39.8     | 64.3     | 80       | 25.4   | 33.8   | 46.1    | 1.9       | 0.56                     | 2.2                    |
| 211122-594-GP              | 22/11/21             | 340                   | 29.0               | 135         | 3:30      | 1         | 29.7                 | 41.4     | 64.6     |          |        |        |         | 2.1       | 0.56                     | 2.2                    |
| 211118-229-GP              | 18/11/21             | 350                   | 29.2               | 135         | 3:30      | 1         | 30.7                 | 40.9     | 64.2     |          |        |        |         | 2.0       | 0.55                     | 2.2                    |

The above samples were tested as received in accordance with the current terms of accreditation and methods stated in NZS 3122:2009 with the exception of:

Chemical composition to ASTM C114-18

- Concrete Compressive Strength test results outside the scope of accreditation

# No result available at time of certificate issue  
\* Tested by SpectraChem Analyticsl - Verrum Group

This Report must not be reproduced except in full

Raki Harding  
Quality Manager

Date issued: 18/02/2022



Portland Works, Portland, Whangarei 0178

Page 1 of 3

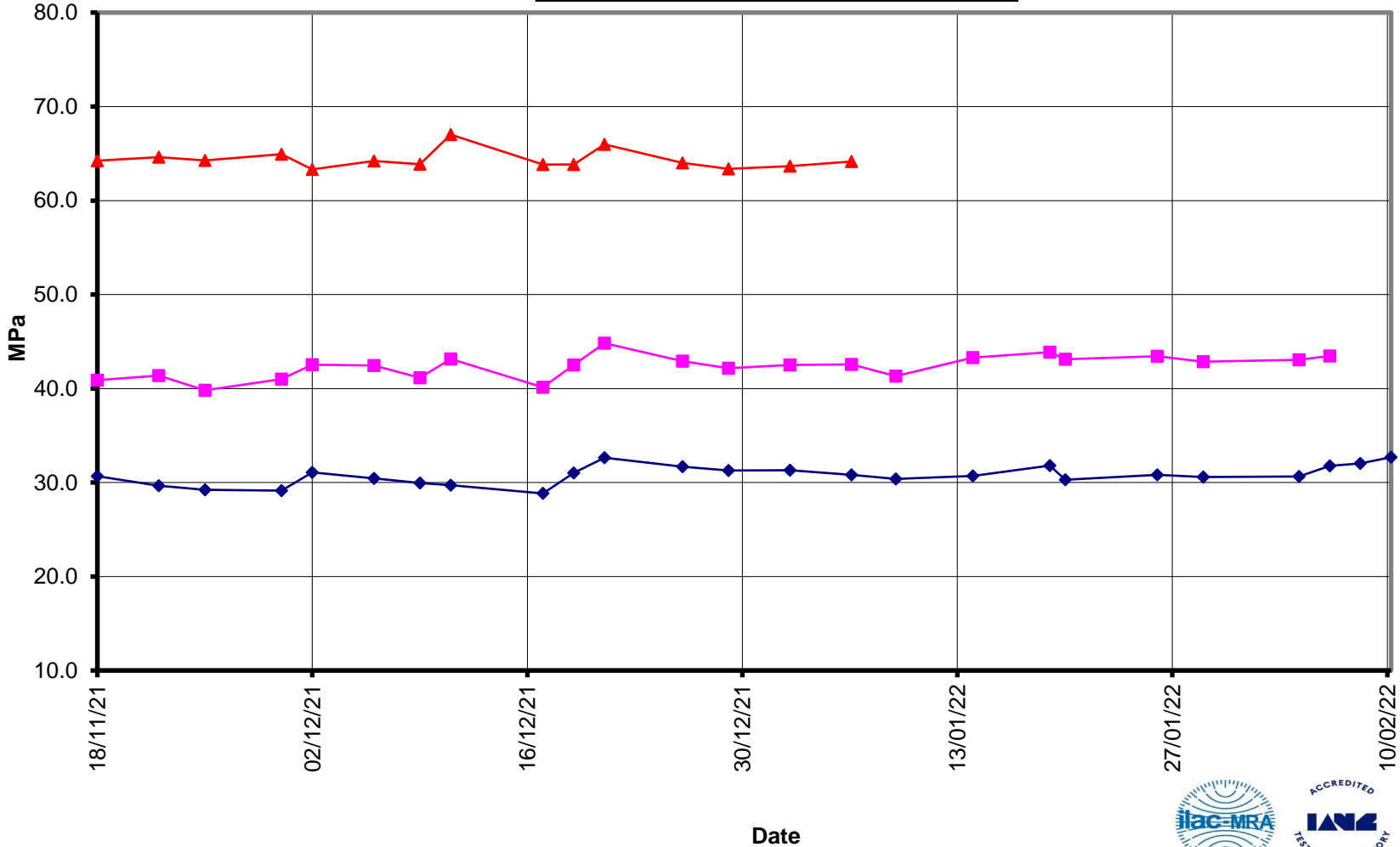


**EverSure™  
Type GP Cement**



**Compressive Strength ISO-CEN Mortar  
(Bulk Dispatch)**

—▲— 28 Days    —■— 7 Days    —◆— 3 Days





# EverSure™ Type GP Cement



## Compressive Strength Concrete (Bulk Dispatch)

—x— 28 Days    —■— 7 Days    —◆— 3 Days    —x— Slump

