



# CERTIFICATE OF QUALITY

## EverSure™ Type GP Cement

NZS3122:2009 (Bulk Despatch)



Our  
NZ made  
cement is  
**genuine**  
NZ grade  
cement.

Issued to: National Sales Manager

Test Report No: 22#21

info@goldenbay.co.nz

Code	Week Ending / Voyage	Specific Surface Area	Normal Consistency	Initial Set	Final Set	Soundness	Compressive Strength							Free Lime	Sodium Equivalent (NaEq)	Sulphur Trioxide (SO3)
							ISOCEN			Concrete						
							3 days	7 days	28 days	Slump	3 days	7 days	28 days			
Mean		335	28.8	137	3:36	1	31.0	42.9	64.5	94	22.4	32.4	46.4	1.7	0.56	2.3
Standard Deviation		9	0.5	10	0:13	0	0.9	1.1	1.0	6	2.2	2.7	3.2	0.2	0.01	0.07
Min		310	28.2	120	3:15	1	28.8	40.1	63.4	80	20.2	26.5	42.0	1.4	0.54	2.2
Max		350	30.4	150	4:15	2	32.7	44.8	67.0	100	25.6	36.3	50.8	2.2	0.58	2.4
NZS 3122:2009 Requirements				45 min	6:00 max	5 max		35.0 min	45.0 min						0.6 max	3.5 max
Units		m2/kg	%	minutes	hrs:mins	mm	MPa	MPa	MPa	mm	MPa	MPa	MPa	%	%	%
220228-856-GP	28/02/22	350	29.0	150	3:30	1	29.8			90	25.6			1.6	0.57	2.3
220226-646-GP	26/02/22	345	29.1	135	3:30	2	31.3	43.3		100	22.4	30.8		1.4	0.56	2.4
220221-648-GP	21/02/22	335	29.0	135	3:30	1	31.5	44.8		100	21.9	31.2		1.6	0.57	2.2
220217-261-GP	17/02/22	330	29.6	135	4:15	2	31.4	41.8		90	26.5	36.3		1.5	0.56	2.3
220215-259-GP	15/02/22	335	29.2	135	4:15	1	31.8	43.3						1.5	0.57	2.2
220214-907-GP	10/02/22	340	30.4	120	3:45	1	32.7	44.4						1.7	0.55	2.4
220214-906-GP	08/02/22	335	29.0	120	3:30	1	32.0	44.1		100	20.2	31.5		1.8	0.54	2.4
220206-419-GP	06/02/22	340	29.2	135	3:45	1	31.8	43.4	63.4					1.6	0.54	2.4
220204-417-GP	04/02/22	335	29.1	150	3:45	1	30.7	43.1	63.6	80	25.6	34.6	49.4	1.6	0.56	2.4
220129-097-GP	29/01/22	330	29.1	135	3:45	1	30.6	42.9	64.7	100	20.7	26.5	43.2	1.8	0.55	2.4
220126-095-GP	26/01/22	325	29.1	135	3:30	1	30.8	43.4	64.1					1.6	0.56	2.3
220120-744-GP	20/01/22	335	28.6	120	3:15	2	30.3	43.1	64.8	90	24.3	36.0	50.8	2.1	*0.53	*2.3
220119-742-GP	19/01/22	340	28.4	120	3:30	1	31.8	43.9	66.2					1.8	*0.52	*2.4
220114-472-GP	14/01/22	340	28.4	135	3:30	2	30.7	43.3	64.9	90	20.2	32.3	45.4	1.9	*0.53	*2.2
220109-465-GP	09/01/22	350	28.3	150	3:30	1	30.4	41.3	64.5					1.7	*0.55	*2.3
220106-870-GP	06/01/22	320	28.6	150	3:30	1	30.8	42.6	64.2					1.6	0.55	2.2
220102-868-GP	02/01/22	310	28.5	135	3:30	1	31.3	42.5	63.7					1.5	0.54	2.2
211229-866-GP	29/12/21	340	28.4	135	3:30	1	31.3	42.1	63.4	100	21.1	31.1	43.2	1.6	0.56	2.2
211226-864-GP	26/12/21	340	28.6	135	3:30	1	31.7	42.9	64.0	100	20.8	31.2	42.0	1.7	0.56	2.2
211221-856-GP	21/12/21	325	28.3	135	3:30	1	32.6	44.8	66.0					1.6	0.57	2.2
211219-854-GP	19/12/21	325	28.4	135	3:30	1	31.0	42.5	63.8	90	20.5	33.4	46.5	1.6	0.55	2.2
211217-592-GP	17/12/21	325	28.2	150	3:45	1	28.8	40.1	63.8					2.2	0.58	2.3
211211-594-GP	11/12/21	330	28.2	150	3:30	1	29.7	43.1	67.0	90	22.1	35.8	49.6	2.2	0.56	2.2
211209-311-GP	09/12/21	345	29.2	150	3:45	1	30.0	41.1	63.9					2.1	0.57	2.2
211206-309-GP	06/12/21	340	29.2	135	3:30	1	30.4	42.4	64.2	90	21.5	31.1	47.2	2.1	0.58	2.2

The above samples were tested as received in accordance with the current terms of accreditation and methods stated in NZS 3122:2009 with the exception of:

Chemical composition to ASTM C114-18

- Concrete Compressive Strength test results outside the scope of accreditation

# No result available at time of certificate issue  
\* Tested by SpectraChem Analyticsl - Verrum Group

This Report must not be reproduced except in full

Raki Harding  
Quality Manager

Date issued: 11/03/2022



Portland Works, Portland, Whangarei 0178

Page 1 of 3

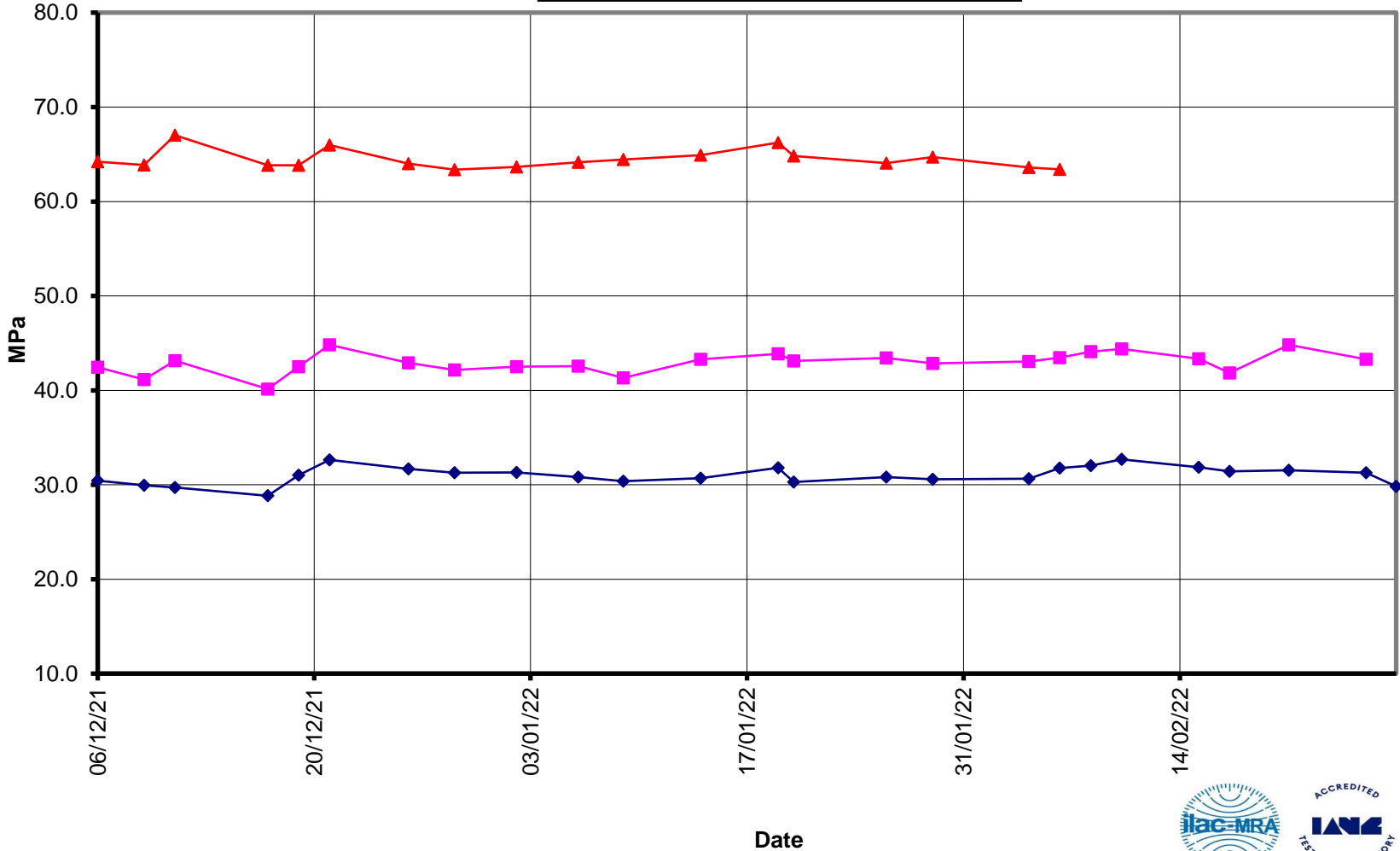


# EverSure™ Type GP Cement



## Compressive Strength ISO-CEN Mortar (Bulk Dispatch)

—▲— 28 Days    —■— 7 Days    —◆— 3 Days





# EverSure™ Type GP Cement



## Compressive Strength Concrete (Bulk Dispatch)

—x— 28 Days    —■— 7 Days    —◆— 3 Days    —x— Slump

