



CERTIFICATE OF QUALITY

EverFast™ Type HE Cement

NZS 3122:2009



Our
NZ made
cement is
genuine
NZ grade
cement.

Issued to: *Technical Sales Manager*

Test Report No: 22#22

info@goldenbay.co.nz

Code	Week Ending	Specific Surface Area	Normal Consistency	Initial Set	Final Set	Soundness	Compressive Strength										Free Lime	Sodium Equivalent (NaEq)	Sulphur Trioxide (SO3)
							ISO-CEN				Concrete								
							1 Day	3 days	7 days	28 days	Slump	1 Day	3 days	7 days	28 days				
Mean		513	33.0	115	3:04	1	22.2	37.2	46.2	65.2	86.8	13.7	31.3	39.3	50.9	1.8	0.55	2.4	
Standard Deviation		12	0.4	11	0:12	0.3	1.1	1.8	1.7	1.1	7.3	1.7	2.5	2.3	1.6	0.4	0.02	0.16	
Min		500	32.3	90	2:30	0	19.8	34.1	42.3	63.7	75.0	9.5	24.6	35.6	48.5	1.3	0.49	1.9	
Max		540	33.8	135	3:30	2	24.4	41.0	49.8	67.7	100.0	17.7	39.1	43.4	53.3	2.7	0.58	2.7	
NZS 3122:2009 Requirements				45 min	6:00 max	5 max		25.0 min	40.0 min								0.6 max	3.5 max	
Units		m2/kg	%	minutes	hrs:mins	mm	Mpa	MPa	MPa	MPa	mm	Mpa	MPa	MPa	MPa	%	%	%	
220221-650-HE	21/02/22	510	33.7	120	3:15	2	24.4	41.0	47.8		80	16.4	39.1	42.8		1.4	0.56	2.4	
220214-909-HE	14/02/22	500	33.8	105	3:00	1	22.2	37.3	47.7		75	9.5	32.0	39.7		1.6	0.55	2.6	
220129-099-HE	29/01/22	505	32.6	120	3:00	1	22.6	39.2	46.2	63.7	80	13.1	33.8	42.1	53.3	1.6	0.56	2.5	
220114-467-HE	14/01/22	520	32.8	120	3:00	1	22.8	39.7	46.8	65.2	100	13.7	31.6	37.2	48.9	1.3	0.52	2.3	
211229-872-HE	29/12/21	540	32.9	135	3:30	0	21.6	37.4	46.6	63.7	80	13.1	33.3	43.1	52.4	1.3	0.53	2.3	
211211-596-HE	11/12/21	510	33.0	120	3:15	1	21.2	35.7	43.5	64.7	90	13.2	29.2	38.6	51.2	2.0	0.56	2.4	
211130-967-HE	30/11/21	515	33.2	120	3:00	1	19.8	35.6	43.0	65.7	90	12.4	30.9	38.5	49.1	1.9	0.57	2.4	
211116-228-HE	16/11/21	530	33.3	120	3:15	1	23.0	34.6	42.3	64.1	90	13.4	29.5	39.0	50.2	2.2	0.55	2.4	
211104-487-HE	04/11/21	510	33.2	120	3:00	1	24.3	37.6	45.0	64.9	90	14.7	30.7	39.1	51.6	1.4	0.55	2.6	
211022-786-HE	22/10/21	510	32.4	120	3:00	1	22.2	34.1	44.3	64.6	90	12.2	30.3	36.5	49.3	1.8	0.54	2.4	
211006-076-HE	06/10/21	505	32.3	105	3:15	0	21.3	35.5	46.2	64.1	90	13.6	30.1	37.5	53.1	1.8	0.55	2.5	
210922-521-HE	22/09/21	505	32.5	90	3:15	1	23.1	35.2	46.1	64.1	80	12.7	30.0	38.4	51.7	2.1	0.56	2.5	
210907-031-HE	07/09/21	500	32.5	120	3:15	1	22.7	36.5	47.1	64.0	100	12.5	29.1	36.5	49.3	1.9	0.56	2.4	
210824-507-HE	24/08/21	530	32.7	105	3:15	2	22.2	39.0	46.3	65.6	90	12.0	31.9	38.3	50.5	1.9	0.57	2.4	
210808-941-HE	08/08/21	515	32.9	105	3:15	1	22.5	37.7	45.0	65.2	100	13.3	24.6	35.6	48.5	2.1	0.57	2.4	
210725-285-HE	25/07/21	515	33.2	120	3:00	1	21.9	36.1	47.8	65.8	90	13.2	32.7	40.7	53.1	1.9	0.58	2.3	
210713-720-HE	13/07/21	500	33.4	105	3:15	1	22.2	36.3	46.3	65.5	90	14.4	29.2	38.2	49.0	2.0	0.57	2.4	
210701-112-HE	01/07/21	525	33.3	105	2:45	1	22.0	39.9	47.9	66.6	90	13.2	32.0	36.9	49.0	2.7	0.58	2.4	
210614-376-HE	14/06/21	525	32.6	105	2:45	1	20.3	36.2	45.7	65.4	80	13.3	31.2	40.4	52.4	2.3	0.54	2.4	
210601-654-HE	01/06/21	525	32.8	120	3:00	1	22.9	35.9	45.5	65.3	80	13.6	29.9	36.9	50.8	2.5	0.55	2.7	
210518-986-HE	18/05/21	500	33.0	135	3:00	1	22.1	36.8	46.4	67.7	80	14.6	32.2	43.4	52.6	2.0	0.49	2.6	
210502-322-HE	02/05/21	505	33.2	105	2:30	1	23.4	39.0	49.8	65.0	90	14.1	30.3	38.1	51.5	1.6	0.49	2.6	
210420-704-HE	20/04/21	505	33.1	120	3:00	1	20.9	37.9	48.1	67.6	90	15.2	33.1	42.2	50.1	1.6	0.53	1.9	
210406-974-HE	06/04/21	500	33.2	120	3:00	1	20.4	36.7	45.8	64.7	80	17.7	32.1	42.3	52.2	1.7	0.51	2.4	
210322-180-HE	22/03/21	530	33.3	105	3:15	1	22.5	38.7	47.6	65.9	75	17.2	33.3	41.6	51.5	1.7	0.53	2.4	

The above samples were tested as received in accordance with the current terms of accreditation and methods stated in NZS 3122:2009 with the exception of:

- Chemical Analysis to ASTM C114-18
- Concrete Compressive Strength test results outside the scope of accreditation

Sample retested
 -No result available at time of certificate issue
 * Tested by SpectraChem Analytical - Verum Group

This Report must not be reproduced except in full

Raki Harding
 Technical Manager



Portland Works, Portland, Whangarei 0178

Date issued: 11/03/22

Page 1 of 3

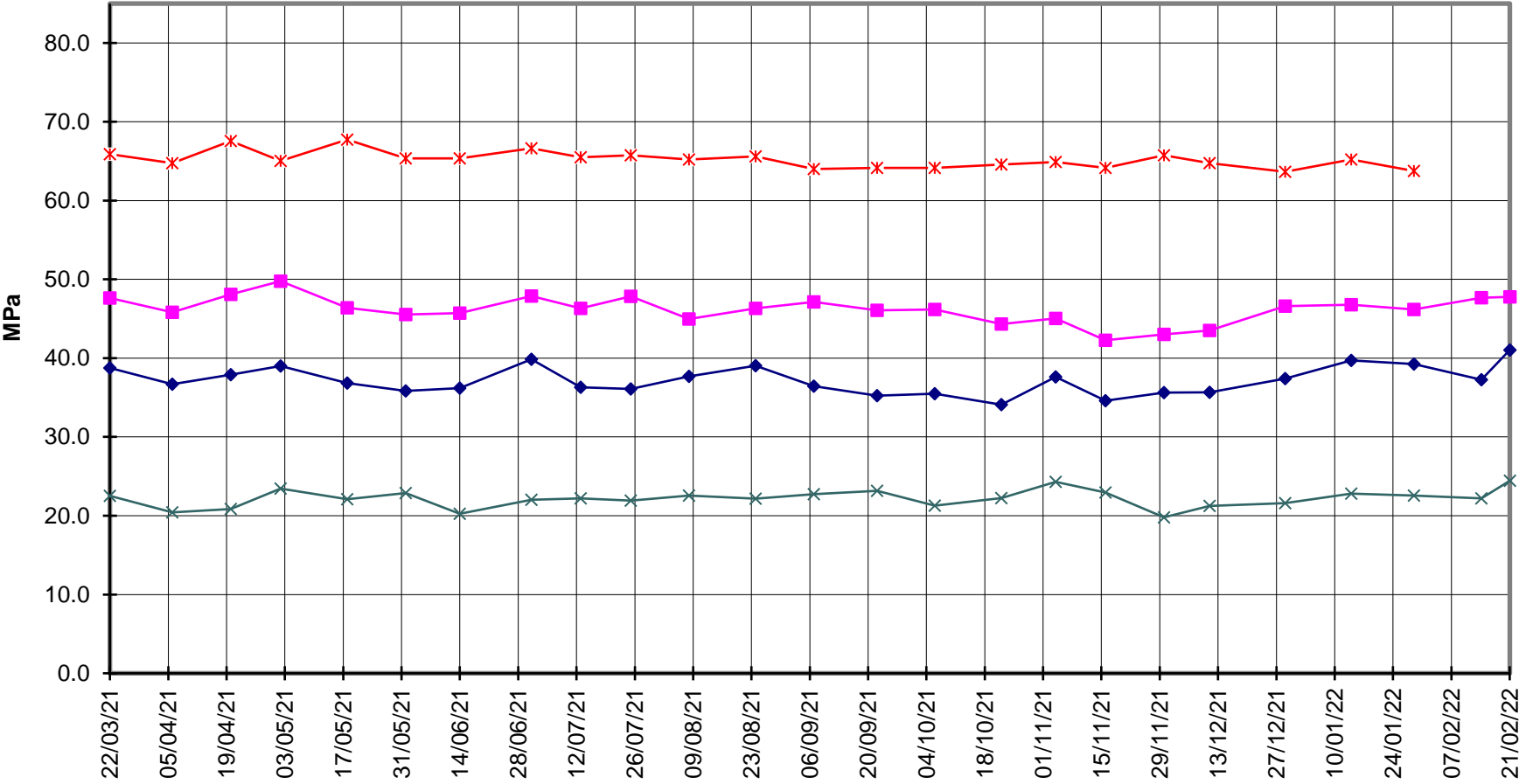


EverFast™ Type HE Cement



Compressive Strength ISO-CEN Mortar

—x— 28 Days —■— 7 Days —◆— 3 Days —x— 1 Day





EverFast™ Type HE Cement



—x— 28 Days —■— 7 Days —◆— 3 Days —x— 1 Day —*— Slump

