



CERTIFICATE OF QUALITY

EverSure™ Type GP Cement

NZS3122:2009 (Bulk Despatch)



Issued to: National Sales Manager

Test Report No: 22#88

info@goldenbay.co.nz

Code	Week Ending / Voyage	Specific Surface Area	Normal Consistency	Initial Set	Final Set	Soundness	Compressive Strength						Free Lime	Sodium Equivalent (NaEq)	Sulphur Trioxide (SO3)	
							ISOCEN			Concrete						
							3 days	7 days	28 days	Slump	3 days	7 days				28 days
Mean		338	29.2	140	3:50	1	29.2	42.1	65.0	87	23.6	33.6	48.2	2.1	0.56	2.2
Standard Deviation		13	0.4	9	0:16	1	1.2	1.9	1.3	9	2.5	2.8	2.6	0.2	0.02	0.04
Min		320	28.3	120	3:30	0	26.9	39.6	63.2	70	19.9	28.0	42.9	1.8	0.52	2.1
Max		360	30.0	150	4:30	2	31.6	45.5	67.8	100	26.9	37.7	50.5	2.4	0.59	2.3
NZS 3122:2009 Requirements				45 min	6:00 max	5 max		35.0 min	45.0 min						0.6 max	3.5 max
Units		m2/kg	%	minutes	hrs:mins	mm	MPa	MPa	MPa	mm	MPa	MPa	MPa	%	%	%
220914-712-GP	14/09/22	355	29.4	135	3:30	1	28.7	40.0						2.3	0.56	2.3
220911-710-GP	11/09/22	340	29.3	135	3:45	1	28.6	39.9		90	23.8	32.1		2.2	0.56	2.3
220906-342-GP	06/09/22	345	29.4	135	3:45	1	28.8	40.7		80	25.8	36.7		1.9	0.57	2.3
220905-338-GP	05/09/22	320	29.5	150	3:45	0	28.1	40.1						1.8	0.55	2.2
220902-015-GP	02/09/22	340	28.3	135	4:00	1	28.4	40.2		80	25.9	34.8		1.9	0.54	2.2
220901-013-GP	01/09/22	345	29.5	135	3:30	1	28.7	42.0						2.0	0.52	2.2
220825-712-GP	25/08/22	320	28.7	150	3:45	2	28.6	40.6	65.0	80	25.5	35.9	47.1	1.9	0.54	2.2
220823-714-GP	23/08/22	325	28.8	135	3:45	1	28.6	39.6	63.7					2.1	0.54	2.2
220820-449-GP	20/08/22	335	28.8	150	3:45	1	28.4	41.5	64.0	90	24.8	35.1	49.2	2.0	0.53	2.3
220814-083-GP	14/08/22	350	29.4	135	3:30	2	28.6	41.8	66.1					2.2	0.52	2.2
220811-081-GP	11/08/22	320	29.6	135	4:00	2	27.2	40.8	63.2	100	19.9	28.0	42.9	2.2	0.52	2.2
220805-762-GP	05/08/22	355	29.2	135	4:00	2	28.1	41.2	63.9	85	20.9	31.4	50.4	2.0	0.54	2.2
220803-764-GP	03/08/22	350	29.2	135	4:00	2	26.9	39.6	63.2					2.4	0.53	2.2
220730-547-GP	30/07/22	355	29.5	150	3:45	2	28.8	40.1	63.5					2.3	0.57	2.3
220728-545-GP	28/07/22	360	29.0	150	4:00	0	30.8	42.7	66.5	80	25.7	34.6	50.3	1.9	0.56	2.2
220722-026-GP	22/07/22	330	29.2	150	4:00	1	30.0	44.9	66.0					1.8	0.56	2.2
220718-021-GP	18/07/22	340	29.1	150	4:00	1	31.1	43.7	64.3	70	26.9	37.7	48.8	1.9	0.58	2.2
220713-838-GP	13/07/22	345	29.2	135	3:30	0	30.1	45.5	67.6					1.9	0.58	2.3
220710-836-GP	10/07/22	345	28.8	150	4:30	1	31.6	44.4	65.3	100	20.7	30.2	44.7	1.8	0.58	2.2
220706-670-GP	06/07/22	325	29.2	135	3:45	1	31.1	43.8	64.6	90	23.5	35.5	50.5	2.0	0.58	2.2
220704-677-GP	04/07/22	320	29.2	135	3:30	1	30.4	43.8	64.8					1.8	0.56	2.2
220630-441-GP	30/06/22	340	29.2	150	3:45	1	30.2	45.4	65.3	90	23.0	33.1	50.0	2.2	0.59	2.3
220629-439-GP	29/06/22	320	29.3	135	3:45	1	28.9	43.9	67.8					2.2	0.58	2.1
220626-136-GP	26/06/22	335	30.0	150	4:30	1	29.1	41.8	65.1	100	20.1	31.9	47.9	2.3	0.57	2.2
220617-574-GP	17/06/22	325	29.0	120	4:00	1	30.0	43.5	64.9					2.4	0.57	2.2

The above samples were tested as received in accordance with the current terms of accreditation and methods stated in NZS 3122:2009 with the exception of:

Chemical composition to ASTM C114-18

- Concrete Compressive Strength test results outside the scope of accreditation

Sample Retested

This Report must not be reproduced except in full

Raki Harding
Quality Manger



Portland Works, Portland, Whangarei 0178

Date issued: 27/09/2022

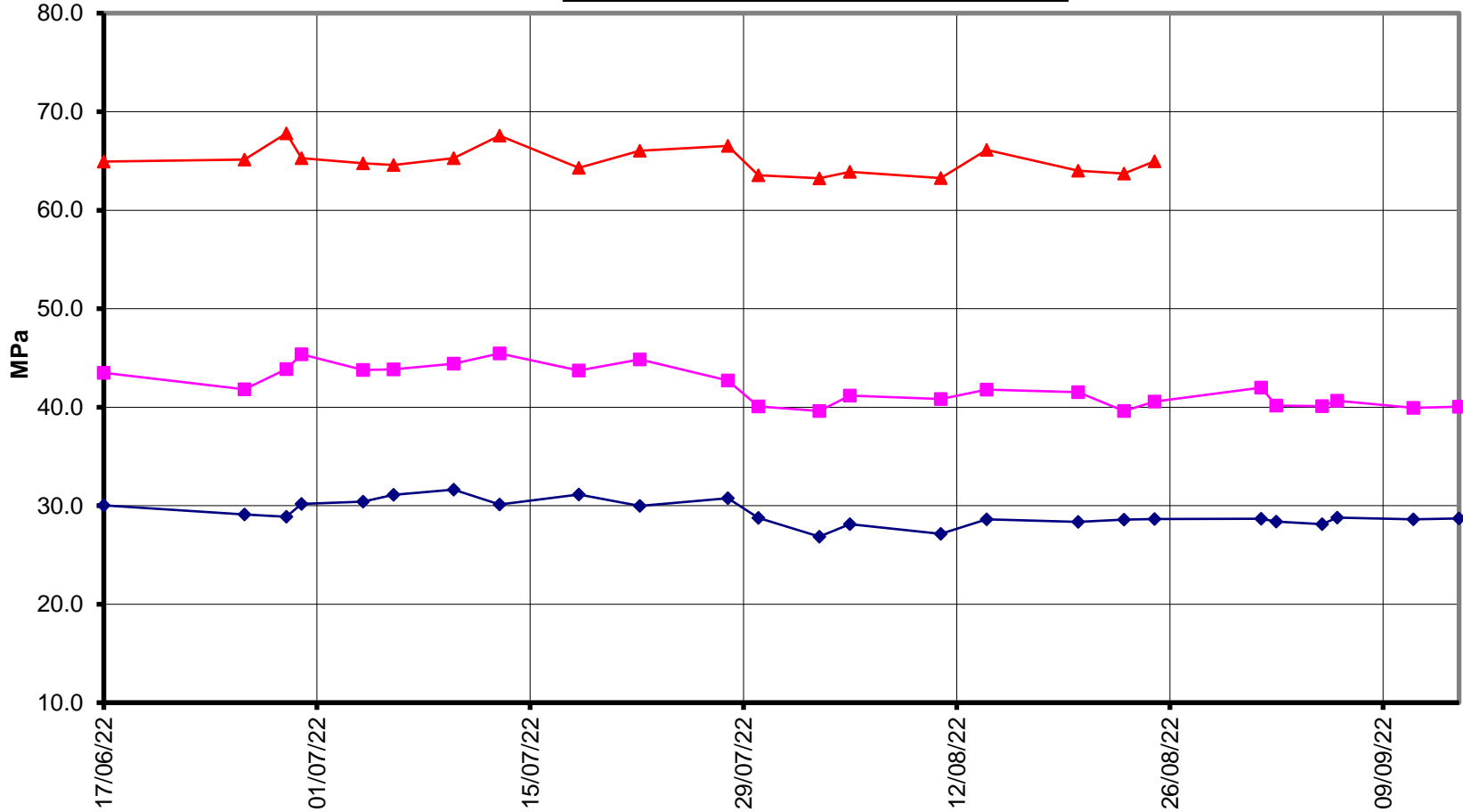
Page 1 of 3



EverSure™
Type GP Cement



Compressive Strength ISO-CEN Mortar
(Bulk Dispatch)



Date





EverSure™ Type GP Cement



Compressive Strength Concrete (Bulk Dispatch)

—x— 28 Days —■— 7 Days —◆— 3 Days —x— Slump

