



# CERTIFICATE OF QUALITY

EverFast™ Type HE Cement

NZS 3122:2009



Issued to: National Sales Manager

Test Report No: 23#02

info@goldenbay.co.nz

Code	Week Ending	Specific Surface Area	Normal Consistency	Initial Set	Final Set	Soundness	Compressive Strength										Free Lime	Sodium Equivalent (NaEq)	Sulphur Trioxide (SO3)
							ISO-CEN				Concrete								
							1 Day	3 days	7 days	28 days	Slump	1 Day	3 days	7 days	28 days				
Mean		518	33.4	122	3:16	1	21.4	37.2	47.4	65.1	82.5	12.1	31.7	40.1	52.1	1.8	0.56	2.4	
Standard Deviation		16	0.6	12	0:13	0.4	1.2	2.2	2.3	1.5	12.5	2.3	2.8	2.4	2.4	0.3	0.02	0.07	
Min		470	32.0	90	2:45	1	18.1	32.6	42.8	62.1	60.0	8.4	26.0	35.7	48.7	1.4	0.53	2.3	
Max		550	34.5	150	3:45	2	24.4	41.0	52.2	68.8	110.0	16.4	39.1	46.7	56.7	2.6	0.60	2.6	
NZS 3122:2009 Requirements				45 min	6:00 max	5 max		25.0 min	40.0 min								0.6 max	3.5 max	
Units		m2/kg	%	minutes	hrs:mins	mm	Mpa	MPa	MPa	MPa	mm	Mpa	MPa	MPa	MPa	%	%	%	
221223-708-HE	23/12/22	470	33.2	150	3:45	1	22.5		52.2							1.6	0.53	2.4	
221202-581-HE	02/12/22	520	33.3	135	3:15	1	21.9	40.1	51.1	68.3	80	13.0	36.7	46.7	54.8	1.6	0.55	2.4	
221126-239-HE	26/11/22	520	33.3	120	3:00	1	22.0	40.3	51.6	65.7	100	9.0	28.3	39.1	50.6	1.9	0.53	2.4	
221109-473-HE	09/11/22	515	32.9	120	3:15	1	20.9	32.6	44.6	66.6	100	8.4	29.3	35.7	49.4	1.9	0.55	2.4	
221027-783-HE	27/10/22	520	32.0	120	3:15	2	20.7	33.8	42.8	64.5	80	8.6	29.2	40.2	53.9	1.5	0.54	2.4	
221008-145-HE	08/10/22	535	32.0	120	3:15	1	21.5	35.8	44.7	65.7	70	10.9	33.0	42.2	56.3	1.5	0.57	2.4	
220927-442-HE	27/09/22	510	33.2	120	3:15	1	19.7	35.3	45.5	64.4	100	8.4	26.0	36.8	48.7	2.1	0.58	2.4	
220911-714-HE	11/09/22	550	33.2	135	3:15	1	21.5	37.8	47.6	65.2	80	12.1	32.6	40.0	53.4	2.0	0.56	2.4	
220902-018-HE	02/09/22	515	33.2	135	3:15	1	21.5	35.2	46.4	64.7	60	12.5	33.0	42.3	53.2	1.8	0.55	2.4	
220820-448-HE	20/08/22	540	33.7	120	3:15	2	19.4	36.8	47.2	65.0	110	12.4	32.7	39.5	51.7	1.8	0.53	2.4	
220805-916-HE	05/08/22	515	33.8	90	3:30	1	18.1	34.4	46.6	63.0	90	9.9	29.0	38.5	55.7	1.5	0.55	2.4	
220718-023-HE	18/07/22	520	33.9	105	3:30	1	22.9	39.8	49.1	68.8	90	14.0	32.3	38.7	55.6	1.5	0.56	2.4	
220710-840-HE	10/07/22	545	33.6	135	3:30	2	20.8	38.2	48.1	63.5	90	13.7	32.0	39.6	51.3	1.8	0.58	2.6	
220626-443-HE	26/06/22	515	33.7	135	3:30	1	21.2	38.8	48.5	62.1	75	11.5	30.6	40.9	49.4	2.0	0.60	2.4	
220612-576-HE	12/06/22	520	32.9	105	3:00	1	21.1	38.3	47.1	65.8	90	10.5	31.4	39.5	50.7	2.0	0.57	2.4	
220602-134-HE	02/06/22	505	34.3	120	3:15	2	20.4	35.1	47.8	66.1	80	12.3	29.2	38.2	49.8	2.1	0.57	2.4	
220518-116-HE	18/05/22	535	34.5	135	3:15	1	21.3	35.9	50.8	66.4	60	13.9	34.1	41.5	56.7	2.6	0.55	2.3	
220503-430-HE	03/05/22	510	33.2	120	3:30	1	21.2	35.7	44.2	65.9	80	12.4	32.1	40.9	50.8	1.8	0.57	2.3	
220416-979-HE	16/04/22	530	33.3	120	3:30	1	21.4	37.0	45.9	64.7	90	13.1	28.5	38.6	50.1	1.8	0.56	2.5	
220404-212-HE	04/04/22	510	33.4	120	3:15	1	21.7	36.9	46.2	63.5	70	14.2	31.6	37.4	51.7	1.9	0.56	2.4	
220322-792-HE	22/03/22	505	33.7	120	2:45	2	21.0	38.4	48.1	65.7	80	14.2	31.4	39.0	49.6	2.3	0.56	2.4	
220306-135-HE	06/03/22	525	34.4	120	3:30	1	22.5	38.8	46.5	64.9	70	16.0	32.8	43.6	51.3	1.7	0.57	2.5	
220221-650-HE	21/02/22	510	33.7	120	3:15	2	24.4	41.0	47.8	63.9	80	16.4	39.1	42.8	49.5	1.4	0.56	2.4	
220214-909-HE	14/02/22	500	33.8	105	3:00	1	22.2	37.3	47.7	63.9	75	9.5	32.0	39.7	53.6	1.6	0.55	2.6	
220129-099-HE	29/01/22	505	32.6	120	3:00	1	22.6	39.2	46.2	63.7	80	13.1	33.8	42.1	53.3	1.6	0.56	2.5	

The above samples were tested as received in accordance with the current terms of accreditation and methods stated in NZS 3122:2009 with the exception of:

- Chemical Analysis to ASTM C114-18
- Concrete Compressive Strength test results outside the scope of accreditation

Sample retested

This Report must not be reproduced except in full

Vincent Lane  
Works Chemist



Portland Works, Portland, Whangarei 0178

Date issued: 09/01/23

Page 1 of 3

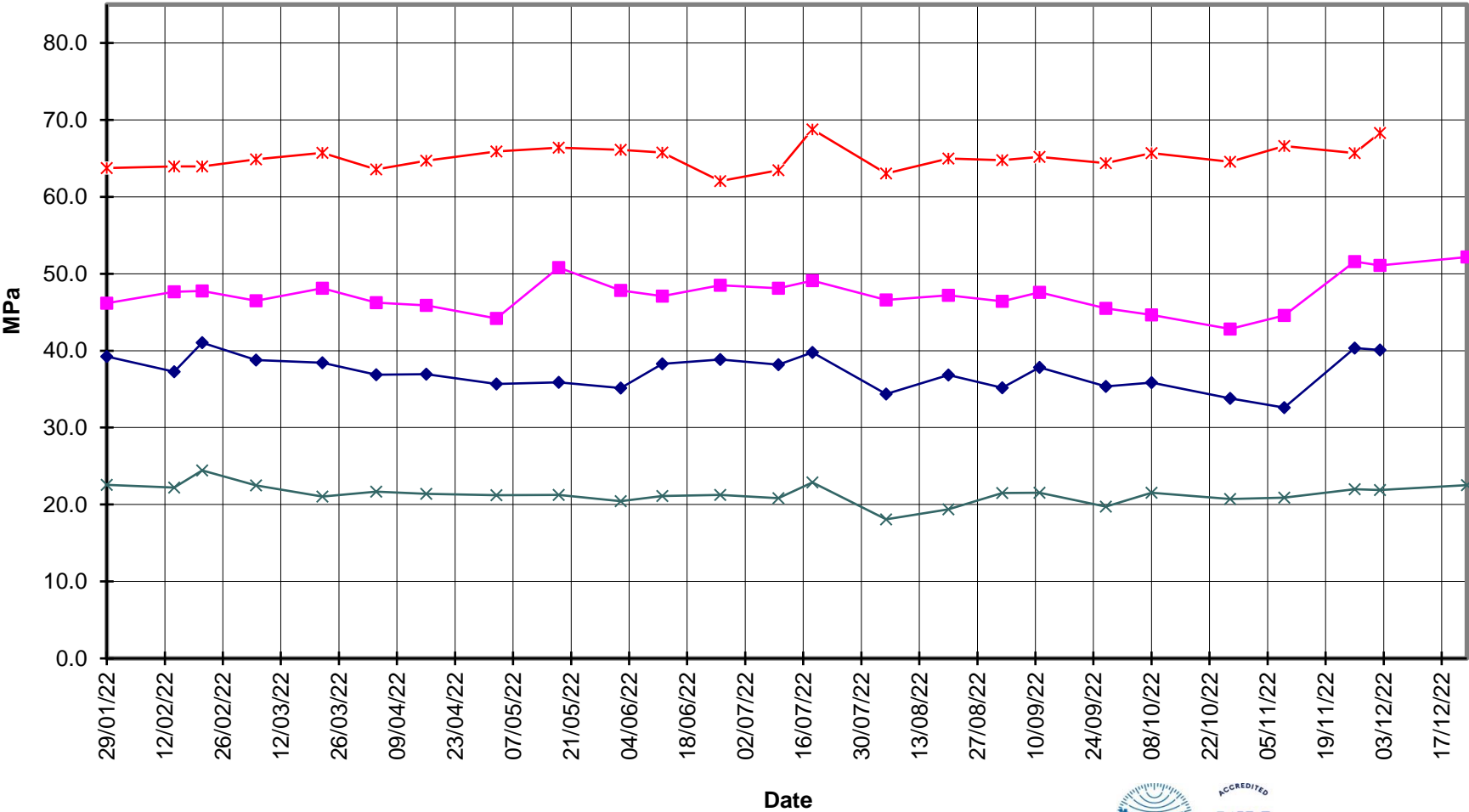


**EverFast™  
Type HE Cement**



**Compressive Strength ISO-CEN Mortar**

—x— 28 Days    —■— 7 Days    —◆— 3 Days    —x— 1 Day





# EverFast™ Type HE Cement



## Compressive Strength Concrete

—x— 28 Days —■— 7 Days —◆— 3 Days —x— 1 Day —\*— Slump

