



CERTIFICATE OF QUALITY

EverFast™ Type HE Cement

NZS 3122:2009



Issued to: National Sales Manager

Test Report No: 23#59

info@goldenbay.co.nz

Code	Week Ending	Specific Surface Area	Normal Consistency	Initial Set	Final Set	Soundness	Compressive Strength										Free Lime	Sodium Equivalent (NaEq)	Sulphur Trioxide (SO3)
							ISO-CEN				Concrete								
							1 Day	3 days	7 days	28 days	Slump	1 Day	3 days	7 days	28 days				
Mean		518	33.5	122	3:15	1	21.5	38.2	48.8	65.9	86.4	11.9	32.2	40.9	52.9	1.7	0.56	2.4	
Standard Deviation		16	0.6	14	0:12	0.4	1.3	2.7	2.8	1.7	12.9	2.2	3.4	3.3	2.8	0.3	0.02	0.07	
Min		470	32.0	90	3:00	0	18.1	32.6	42.8	62.1	60.0	8.5	26.0	35.5	48.5	1.0	0.53	2.3	
Max		550	34.3	150	3:45	2	24.2	43.1	52.7	68.9	110.0	17.0	41.0	49.5	59.0	2.1	0.60	2.6	
NZS 3122:2009 Requirements				45 min	6:00 max	5 max		25.0 min	40.0 min								0.6 max	3.5 max	
Units		m2/kg	%	minutes	hrs:mins	mm	Mpa	MPa	MPa	MPa	mm	Mpa	MPa	MPa	MPa	%	%	%	
230515-608-HE	15/05/23	510	34.1	135	3:30	1	22.2	40.9	51.7		100					1.3	0.57	2.36	
230502-180-HE	02/05/23	505	33.8	105	3:00	1	21.2	39.1	52.3	65.7	110					1.6	0.54	2.32	
230421-499-HE	21/04/23	520	33.7	120	3:30	0	21.4	39.2	49.9	66.8	90	12.5	33.5	39.5	53.5	1.4	0.60	2.32	
230402-983-HE	02/04/23	505	33.6	135	3:15	1	22.4	40.8	50.6	65.6	70	13.0	39.5	44.0	56.5	1.0	0.58	2.31	
230323-333-HE	23/03/23	510	34.0	120	3:00	1	24.2	43.1	51.1	66.6	70	17.0	41.0	49.5	59.0	1.5	0.58	2.49	
230309-656-HE	09/03/23	505	33.7	135	3:00	2	22.7	42.9	52.7	68.0	80	12.5	33.5	44.5	54.5	1.4	0.56	2.35	
230217-807-HE	17/02/23	530	34.0	120	3:00	1	22.9	40.8	49.9	65.3	80	12.0	32.5	40.0	54.0	1.8	0.59	2.43	
230203-221-HE	03/02/23	520	34.2	105	3:15	1	21.8	38.8	49.1	67.2	100	13.0	30.0	42.5	50.5	1.2	0.55	2.28	
221231-210-HE	31/12/22	520	33.3	105	3:00	1	22.3	39.1	52.7	67.7	80	15.5	34.5	45.0		1.5	0.56	2.53	
221223-708-HE	23/12/22	470	33.2	150	3:45	1	22.5	38.0	52.2	68.9	80	10.0	30.0	38.5	51.5	1.6	0.53	2.44	
221202-581-HE	02/12/22	520	33.3	135	3:15	1	21.9	40.1	51.1	68.3	80	13.0	36.5	46.5	55.0	1.6	0.55	2.35	
221126-239-HE	26/11/22	520	33.3	105	3:00	1	22.0	40.3	51.6	65.7	100	9.0	28.5	39.0	50.5	1.9	0.53	2.44	
221109-473-HE	09/11/22	515	32.9	120	3:15	1	20.9	32.6	44.6	66.6	100	8.5	29.5	35.5	49.5	1.9	0.55	2.35	
221027-783-HE	27/10/22	520	32.0	120	3:15	2	20.7	33.8	42.8	64.5	80	8.5	29.0	40.0	54.0	1.5	0.54	2.39	
221008-145-HE	08/10/22	535	32.0	120	3:15	1	21.5	35.8	44.7	65.7	70	11.0	33.0	42.0	56.5	1.5	0.57	2.39	
220927-442-HE	27/09/22	510	33.2	120	3:15	1	19.7	35.3	45.5	64.4	100	8.5	26.0	37.0	48.5	2.1	0.58	2.41	
220911-714-HE	11/09/22	550	33.2	135	3:15	1	21.5	37.8	47.6	65.2	80	12.0	32.5	40.0	53.4	2.0	0.56	2.41	
220902-018-HE	02/09/22	515	33.2	135	3:15	1	21.5	35.2	46.4	64.7	60	12.5	33.0	42.5	53.0	1.8	0.55	2.38	
220820-448-HE	20/08/22	540	33.7	120	3:15	2	19.4	36.8	47.2	65.0	110	12.5	32.5	39.5	51.5	1.8	0.53	2.38	
220805-916-HE	05/08/22	515	33.8	90	3:30	1	18.1	34.4	46.6	63.0	90	10.0	29.0	38.5	55.5	1.5	0.55	2.40	
220718-023-HE	18/07/22	520	33.9	120	3:30	1	22.9	39.8	49.1	68.8	90	14.0	32.5	38.5	55.5	1.5	0.56	2.41	
220710-840-HE	10/07/22	545	33.6	135	3:30	2	20.8	38.2	48.1	63.5	90	13.5	32.0	39.5	51.5	1.8	0.58	2.61	
220626-443-HE	26/06/22	515	33.7	135	3:30	1	21.2	38.8	48.5	62.1	80	11.5	30.5	41.0	49.5	2.0	0.60	2.42	
220612-576-HE	12/06/22	520	32.9	105	3:00	1	21.1	38.3	47.1	65.8	90	10.5	31.4	39.5	50.7	2.0	0.57	2.37	
220602-134-HE	02/06/22	505	34.3	120	3:15	2	20.4	35.1	47.8	66.1	80	12.5	29.2	38.2	49.8	2.1	0.57	2.38	

The above samples were tested as received in accordance with the current terms of accreditation and methods stated in NZS 3122:2009 with the exception of:

- Chemical Analysis to ASTM C114-18

All concrete testing conducted in accordance with NZS 3112:1986.

Sample retested

Testing Error-Result Not Available

Data reported as per requirements of NZS 3112:1986 & ASTM C114-18

This Report must not be reproduced except in full

Vincent Lane
Works Chemist



Portland Works, Portland, Whangarei 0178

Date issued: 16/06/23

Page 1 of 3

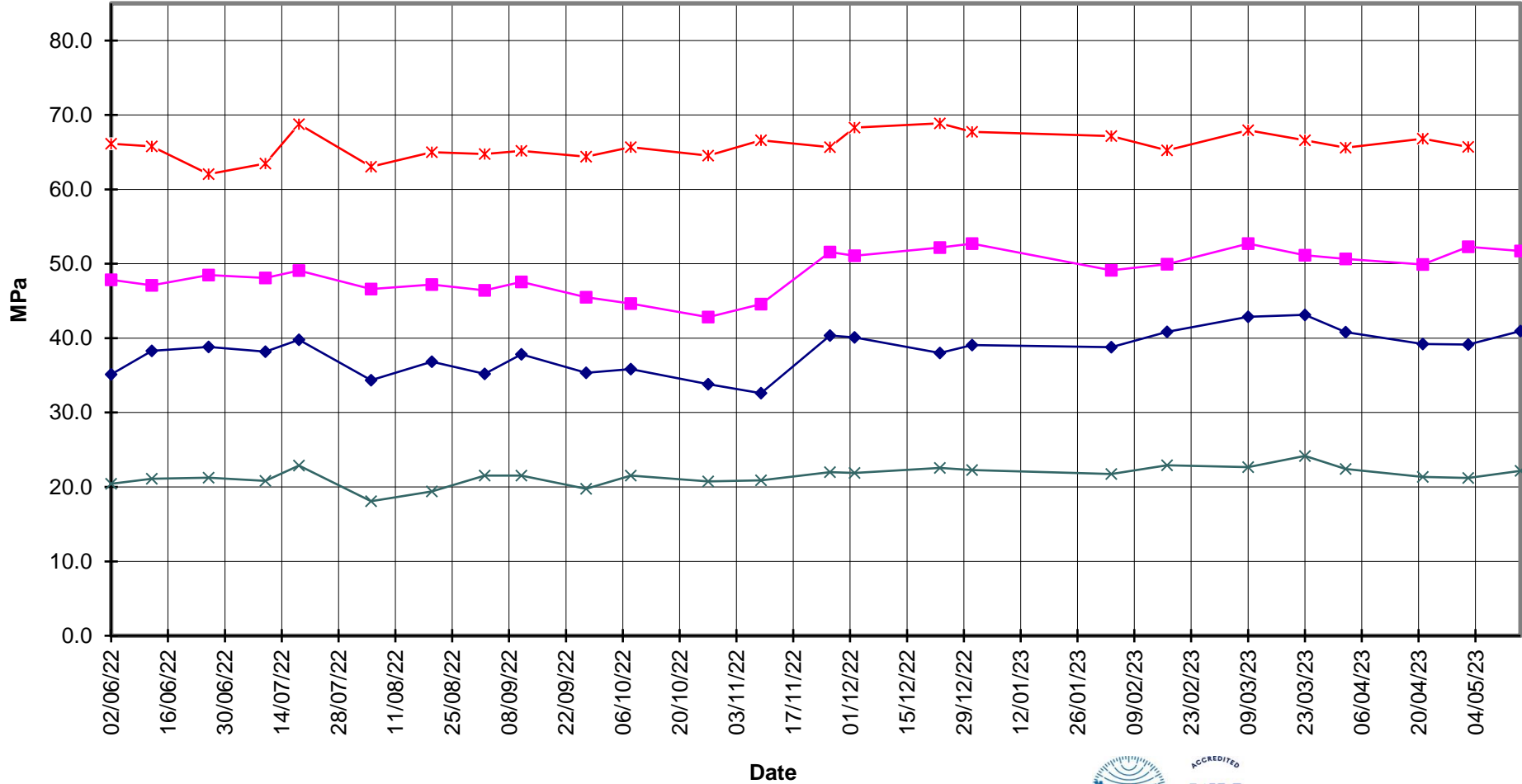


EverFast™ Type HE Cement



Compressive Strength ISO-CEN Mortar

—x— 28 Days —■— 7 Days —◆— 3 Days —x— 1 Day





EverFast™ Type HE Cement



Compressive Strength Concrete

—x— 28 Days —■— 7 Days —◆— 3 Days —x— 1 Day —*— Slump

