

CERTIFICATE OF QUALITY

EcoFast[®] Type HE Cement

NZS 3122:2009



Issued to: National Sales Manager

Test Report No: 24#74

info@goldenbay.co.nz

Code	Week Ending	Specific Surface Area	Normal Consistency	Initial Set	Final Set	Soundness	Compressive Strength										Free Lime	Sodium Equivalent (NaEq)	Sulphur Trioxide (SO3)
							ISO-CEN				Slump	Concrete							
							1 day	3 days	7 days	28 days		1 day	3 days	7 days	28 days				
Mean		519	33.3	117	3:00	1	24.3	42.5	52.9	67.6	84.4	15.2	36.3	44.4	54.3	1.5	0.56	2.38	
Standard Deviation		15	0.5	12	0:18	0.4	1.2	1.7	1.8	1.8	10.0	1.5	3.2	2.7	3.5	0.3	0.02	0.04	
Min		500	31.9	90	2:30	0	22.0	38.5	48.7	64.2	70.0	12.0	29.5	40.0	48.0	1.1	0.52	2.31	
Max		565	34.0	135	3:45	2	27.4	45.3	56.3	71.2	100.0	18.5	45.0	51.0	61.0	1.9	0.60	2.45	
NZS 3122:2009 Requirements				45 min	6:00 max	5 max		25.0 min	40.0 min								0.6 max	3.5 max	
Units		m ² /kg	%	minutes	hrs:mins	mm	Mpa	MPa	MPa	MPa	mm	Mpa	MPa	MPa	MPa	%	%	%	
240605-539-HE	05/06/24	510	33.4	120	3:00	1	24.3	41.7			80	18.5	38.5			1.6	0.54	2.39	
240523-038-HE	23/05/24	505	33.2	135	3:45	1	23.5	42.2	54.8		100	15.0	35.5	43.0		1.4	0.53	2.42	
240429-362-HE	29/04/24	550	33.3	135	3:00	1	23.2	43.0	51.1	64.2	90	15.0	37.5	46.5	56.0	1.5	0.56	2.43	
240421-987-HE	21/04/24	520	33.7	120	3:15	2	22.7	43.7	50.3	67.2	100	16.0	35.5	44.5	53.5	1.5	0.57	2.42	
240409-388-HE	09/04/24	530	33.8	135	3:15	1	24.9	43.2	51.8	66.7	100	15.0	29.5	40.5	48.0	1.4	0.56	2.39	
240318-418-HE	18/03/24	520	34.0	135	3:30	1	24.1	43.1	52.6	66.4	70	17.0	42.5	47.0	61.0	1.8	0.57	2.44	
240310-055-HE	10/03/24	505	33.1	120	3:15	1	24.2	44.3	53.7	70.3	90	15.0	35.0	43.5	54.0	1.1	0.58	2.37	
240301-396-HE	01/03/24	520	32.8	120	3:00	1	23.9	42.0	52.8	67.7	90	14.0	34.5	45.5	55.5	1.6	0.56	2.36	
240214-666-HE	14/02/24	515	32.9	120	3:00	2	23.5	42.3	53.2	66.0	70	16.0	37.0	45.5	54.5	1.3	0.57	2.38	
240131-050-HE	31/01/24	565	33.0	120	3:15	1	23.2	44.3	50.6	65.9	90	15.0	36.5	43.5	52.5	1.7	0.56	2.40	
240105-173-HE	05/01/24	510	33.1	120	2:45	1	24.9	40.0	51.9	65.6	70	15.0	38.0	44.0	50.0	1.8	0.56	2.38	
231221-463-HE	21/12/23	530	33.0	135	3:15	1	27.4	41.4	56.3	67.9	80	15.0	35.5	44.0	51.0	1.1	0.56	2.33	
231202-748-HE	02/12/23	520	31.9	105	3:00	1	24.3	42.9	53.1	65.0	80	14.0	31.5	40.0	52.0	1.9	0.60	2.32	
231123-052-HE	23/11/23	525	32.5	105	3:15	0	24.0	38.6	53.3	68.4	90	15.0	36.5	42.5	54.5	1.8	0.58	2.31	
231109-562-HE	09/11/23	505	33.3	120	3:00	1	23.8	42.7	55.7	66.8	80	15.5	36.5	46.0	56.5	1.3	0.58	2.34	
231024-980-HE	24/10/23	525	33.6	105	2:30	1	25.6	41.8	51.8	67.0	100	14.5	35.5	42.0	50.5	1.7	0.54	2.43	
231011-416-HE	11/10/23	515	33.6	120	2:45	1	25.0	43.8	53.5	71.2	90	12.0	34.0	41.0	52.5	1.7	0.52	2.44	
230928-726-HE	28/09/23	520	33.7	120	3:00	0	24.9	43.8	53.8	68.2	80	13.0	32.5	42.0	50.5	1.5	0.58	2.42	
230915-076-HE	15/09/23	515	33.7	90	3:15	1	26.4	45.3	56.1	69.3	80	18.5	45.0	51.0	59.5	1.1	0.55	2.35	
230829-365-HE	29/08/23	500	33.5	105	2:45	1	24.6	41.9	48.7	68.7	90	17.0	34.5	46.0	58.0	1.2	0.54	2.39	
230818-643-HE	18/08/23	535	33.5	105	2:45	1	25.1	42.0	52.2	66.8	80	14.0	36.5	45.5	56.0	1.3	0.57	2.35	
230731-091-HE	31/07/23	505	33.6	105	2:30	1	24.1	42.6	52.3	68.7	80	14.5	35.0	42.0	51.5	1.4	0.57	2.45	
230719-439-HE	19/07/23	510	33.8	105	2:45	1	25.3	44.7	54.7	67.1	70	14.0	41.0	49.0	57.5	1.5	0.56	2.35	
230704-729-HE	04/07/23	520	33.6	105	2:30	0	22.9	43.8	53.1	68.5	70	16.0	35.0	45.0	60.5	1.7	0.58	2.38	
230617-001-HE	17/06/23	510	33.6	120	3:00	1	22.0	38.5	52.7	70.4	90	15.5	38.0	47.0	54.5	1.9	0.56	2.33	

The above samples were tested as received in accordance with the current terms of accreditation and methods stated in NZS 3122:2009 with the exception of:

Chemical Analysis to ASTM C114-18

All concrete testing conducted in accordance with NZS 3112:1986.

This Report must not be reproduced except in full

Vincent Lane

Vincent Lane
Works Chemist



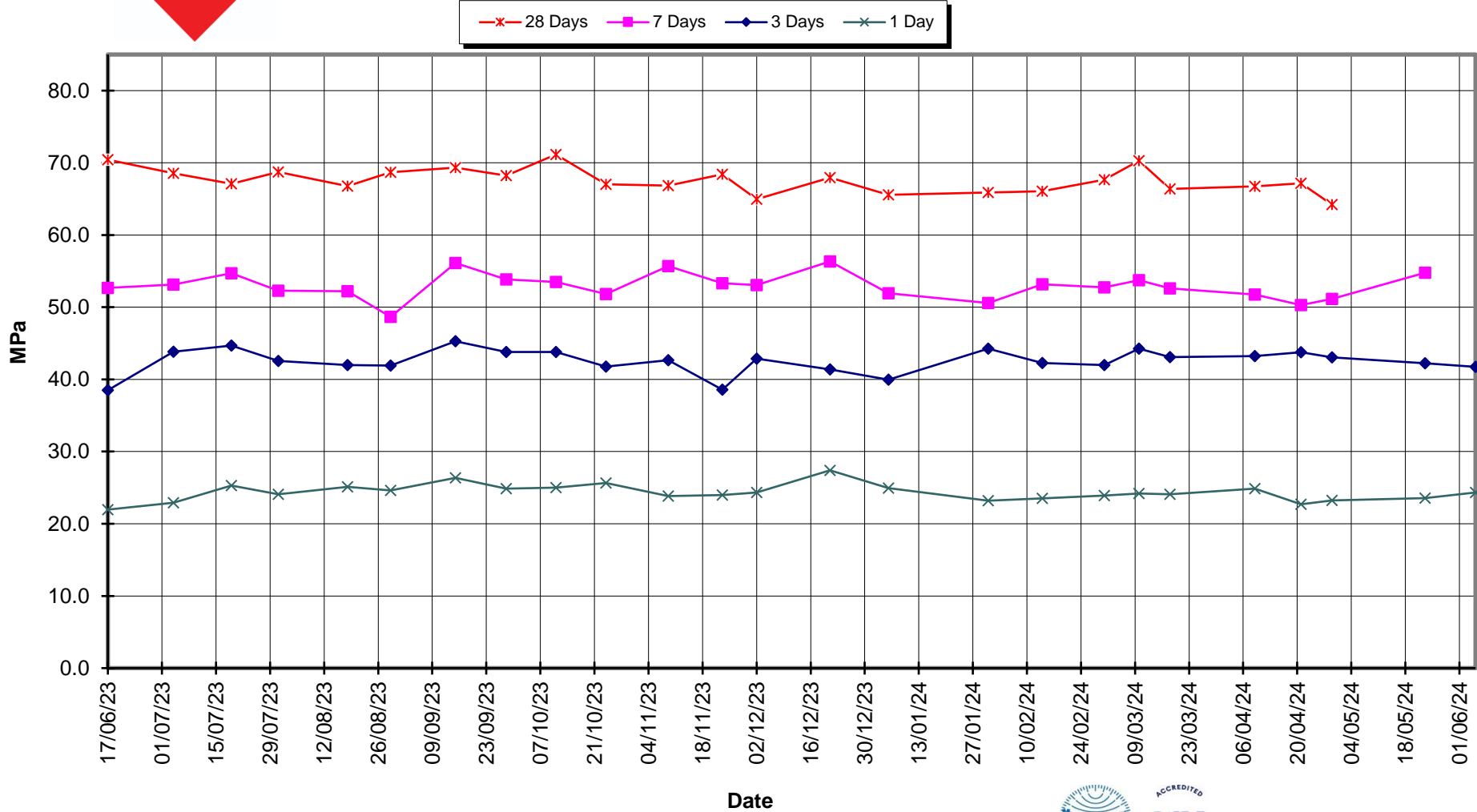
Portland Works, Portland, Whangarei 0178

Date issued: 14/06/24

Page 1 of 3



**EcoFast®
Type HE Cement
Compressive Strength ISO-CEN Mortar**





EcoFast[®] Type HE Cement



Compressive Strength Concrete

—x— 28 Days —■— 7 Days —◆— 3 Days —x— 1 Day —*— Slump

