



CERTIFICATE OF QUALITY

EcoFast® Type HE Cement



NZS3122:2009 (Bulk & Bag Dispatch)

Issued to: National Sales Manager

Test Report No:

25#165

info@goldenbay.co.nz

Code	Week Ending / Voyage	Specific Surface Area	Normal Consistency	Initial Set	Final Set	Soundness	Compressive Strength										Free Lime	Sodium Equivalent (NaEq)	Sulphur Trioxide (SO ₃)
							ISOCEN				Concrete								
							1 Days	3 days	7 days	28 days	Slump	1 Days	3 days	7 days	28 days				
Mean		520	33.1	137	3:19	1	23.4	41.1	52.6	66.0	86	15.3	37.6	45.8	55.4	1.5	0.56	2.37	
Standard Deviation		13	0.7	12	0:14	0.4	1.3	2.0	2.7	1.5	8	2.1	4.4	4.0	3.8	0.2	0.02	0.07	
Min		500	31.6	120	3:00	0	19.8	36.1	48.0	64.0	80	11.0	30.0	38.0	49.0	1.2	0.52	2.15	
Max		545	34.6	165	3:45	2	25.5	44.4	56.8	68.8	110	20.0	48.0	56.0	64.0	1.9	0.59	2.48	
NZS 3122:2009 Requirements				45 min	6:00 max	5 max		25.0 min	40.0 min								0.6 max	3.5 max	
Units		m ² /kg	%	minutes	hrs:mins	mm	MPa	MPa	MPa	MPa	mm	MPa	MPa	MPa	MPa	%	%	%	
251016-395	16/10/25	520	33.3	120	3:15	1	25.4	44.4			90	15.0	39.0			1.5	0.59	2.41	
250928-832	28/09/25	520	33.5	135	3:15	1	23.8	42.1	55.0		90	15.0	39.5	46.5		1.2	0.58	2.40	
250908-974	08/09/25	510	33.6	120	3:00	1	23.0	40.6	54.5	68.8	90	16.0	39.0	47.0	58.5	1.5	0.56	2.38	
250825-423	25/08/25	545	34.1	135	3:30	1	23.7	42.9	55.4	67.5	80	20.0	48.0	54.0	64.0	1.6	0.57	2.43	
250803-476	03/08/25	535	33.6	135	3:30	1	22.6	41.3	55.0	65.5	80	15.0	37.5	45.0	56.5	1.7	0.56	2.34	
250725-895	25/07/25	515	33.6	135	3:15	1	22.8	41.7	55.0	67.1	110	15.0	36.0	47.0	56.0	1.6	0.56	2.43	
250706-288	06/07/25	510	33.4	135	3:15	0	24.9	40.6	53.7	64.2	90	17.5	40.5	46.5	56.5	1.8	0.53	2.39	
250704-070	04/07/25	515	34.6	150	3:30	0	22.0	41.7	55.1	64.6	90	16.5	38.0	46.5	54.0	1.8	0.52	2.32	
250621-507	21/06/25	540	34.4	120	3:00	1	23.5	41.0	53.1	65.6	80	18.5	43.5	48.5	58.5	1.9	0.57	2.45	
250528-476	28/05/25	540	33.2	120	3:00	1	24.0	42.1	55.7	68.4	90	14.5	36.5	49.0	58.0	1.7	0.56	2.39	
250512-938	12/05/25	530	33.2	135	3:15	0	23.5	43.5	56.8	67.6	80	17.0	41.0	49.0	58.0	1.3	0.57	2.38	
250418-786	18/04/25	510	32.4	135	3:00	1	22.7	43.3	55.0	68.2	80	17.5	46.5	56.0	62.5	1.4	0.58	2.36	
250327-064	27/03/25	520	31.7	135	3:30	2	22.9	40.5	52.7	65.8	80	14.0	38.5	49.0	57.5	1.2	0.58	2.31	
250214-916	14/02/25	500	33.3	150	3:30	1	22.2	42.7	53.4	66.8	80	15.5	40.0	47.0	57.0	1.4	0.55	2.38	
241220-145	20/12/24	525	32.5	165	3:45	1	25.5	43.6	54.6	68.0	80	11.0	32.0	42.0	54.0	1.2	0.54	2.36	
241118-955	18/11/24	515	32.6	135	3:15	1	19.8	36.1	48.1	64.4	80	13.5	34.5	43.5	54.0	1.2	0.54	2.15	
241016-523	16/10/24	525	32.7	150	3:15	2	21.8	38.3	49.3	64.7	80	13.5	33.5	44.0	52.5	1.6	0.57	2.33	
240925-558	25/09/24	500	32.9	135	3:30	0	25.3	38.8	52.7	66.2	80	14.5	32.5	41.5	51.0	1.3	0.57	2.42	
240909-114	09/09/24	535	32.7	135	3:15	1	22.8	38.9	49.4	64.7	90	11.5	32.5	42.5	55.0	1.7	0.55	2.36	
240825-361	25/08/24	525	32.9	135	3:15	0	23.6	40.7	50.5	65.2	90	15.5	35.0	42.0	52.5	1.5	0.55	2.41	
240814-686	14/08/24	510	32.8	150	3:30	1	23.4	41.1	49.0	64.9	100	12.5	33.0	42.0	49.5	1.6	0.53	2.29	
240729-144	29/07/24	505	33.1	150	3:45	1	24.7	42.2	50.3	65.7	80	15.5	39.0	44.5	56.0	1.6	0.59	2.48	
240716-575	16/07/24	530	31.6	150	3:45	1	22.8	40.0	50.1	65.2	90	15.5	35.0	42.5	49.0	1.6	0.53	2.30	
240621-277	21/06/24	515	33.3	135	3:00	1	23.2	37.2	48.0	64.0	100	14.0	30.0	38.0	50.5	1.3	0.53	2.38	
240605-539	05/06/24	510	33.4	120	3:00	1	24.3	41.7	50.0	64.8	80	18.5	38.5	46.0	53.0	1.6	0.54	2.39	

The above samples were tested as received in accordance with the current terms of accreditation and methods stated in NZS 3122:2009 with the exception of: Chemical composition to ASTM C114-23

All concrete testing conducted in accordance with NZS 3112:1986.

This Report must not be reproduced except in full



Marley Korach

Marley Korach-Salt
Chemical Technician

Portland Works, Portland, Whangarei 0178

Date issued: 24/10/2025

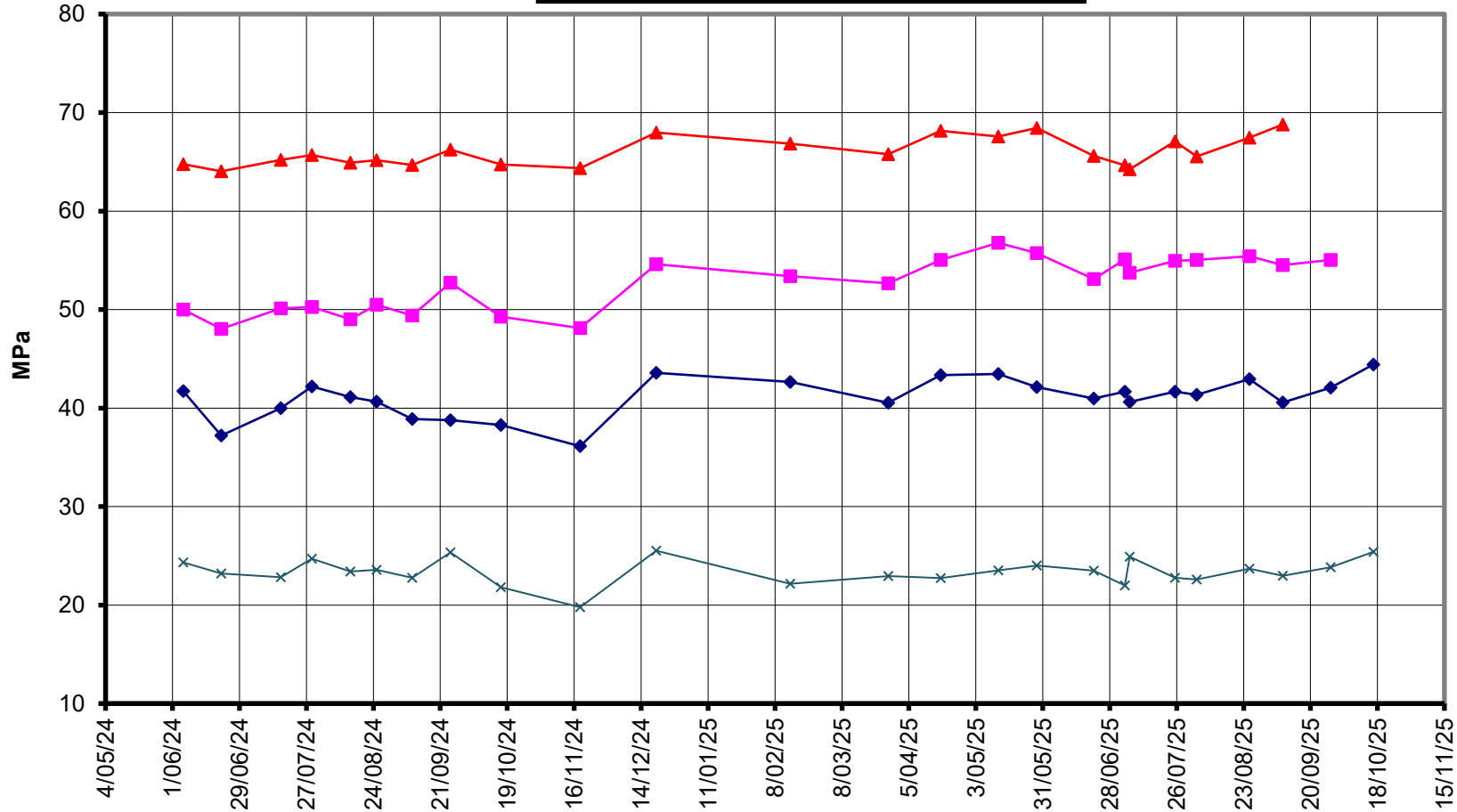
Page 1 of 3



EcoFast®
Type HE Cement



Compressive Strength ISO-CEN Mortar





EcoFast® Type HE Cement

Compressive Strength Concrete

