



CERTIFICATE OF QUALITY

EcoSure® Type GP Cement

NZS3122:2009 (Bulk & Bag Dispatch)



Issued to: National Sales Manager

Test Report No: 25#37

info@goldenbay.co.nz

Code	Week Ending / Voyage	Specific Surface Area	Normal Consistency	Initial Set	Final Set	Soundness	Compressive Strength							Free Lime	Sodium Equivalent (NaEq)	Sulphur Trioxide (SO ₃)
							ISOCEN			Concrete						
							3 days	7 days	28 days	Slump	3 days	7 days	28 days			
Mean		370	29.5	165	3:58	1	35.0	47.8	64.2	89	28.2	38.1	49.6	1.3	0.54	2.31
Standard Deviation		9	0.2	11	0:12	0.4	1.5	1.8	1.4	8	3.6	4.7	3.5	0.2	0.02	0.04
Min		355	29.1	135	3:30	0	32.1	44.0	62.0	80	22.0	30.5	44.0	1.1	0.51	2.24
Max		385	29.8	180	4:30	2	37.3	51.1	66.2	100	33.5	45.0	55.0	1.8	0.57	2.44
NZS 3122:2009 Requirements				45 min	6:00 max	5 max		35.0 min	45.0 min						0.6 max	3.5 max
Units		m ² /kg	%	minutes	hrs:mins	mm	MPa	MPa	MPa	mm	MPa	MPa	MPa	%	%	%
250327-922-GP	27/03/25	365	29.7	180	4:15	1	36.2	49.5						1.3	0.57	2.31
250323-924-GP	23/03/25	385	29.8	165	4:00	1	36.0	49.5		100	29.0			1.3	0.57	2.33
250319-584-GP	19/03/25	370	29.8	165	3:45	0	37.3	48.7						1.3	0.56	2.44
250316-582-GP	16/03/25	360	29.7	165	4:15	1	36.3	48.4		80	30.0	43.5		1.5	0.55	2.30
250312-330-GP	12/03/25	360	29.8	135	3:30	1	35.9	51.1						1.3	0.54	2.37
250308-321-GP	08/03/25	365	29.7	150	3:45	1	36.4	48.7		90	33.5	43.0		1.3	0.54	2.36
250305-953-GP	05/03/25	365	29.5	150	4:00	2	35.0	48.9		80	26.0	36.5		1.3	0.54	2.31
250301-730-GP	01/03/25	360	29.7	165	4:00	1	36.0	46.4	63.1	80	32.0	44.0	55.0	1.1	0.52	2.32
250224-728-GP	24/02/25	375	29.7	165	4:00	2	36.4	49.1	64.9					1.2	0.53	2.34
250222-388-GP	22/02/25	370	29.6	165	4:00	1	35.6	48.5	62.7					1.4	0.52	2.28
250218-221-GP	18/02/25	375	29.5	165	4:00	1	36.6	49.1	63.7	100	27.0	36.5	49.5	1.3	0.52	2.32
250214-917-GP	14/02/25	380	29.6	165	4:00	1	36.1	49.2	65.8					1.4	0.52	2.32
250211-914-GP	11/02/25	385	29.5	165	4:00	1	35.5	49.1	64.8	90	29.0	35.0	49.0	1.3	0.51	2.30
250207-556-GP	07/02/25	380	29.5	180	4:00	1	34.3	47.9	62.5	90	29.5	41.0	50.0	1.3	0.53	2.32
250201-373-GP	01/02/25	365	29.4	165	4:00	1	35.5	48.5	66.2					1.1	0.53	2.27
250130-232-GP	30/01/25	355	29.4	165	4:15	1	36.1	48.6	65.2	90	28.5	38.0	49.0	1.1	0.54	2.26
250125-065-GP	25/01/25	355	29.5	180	4:00	1	33.6	46.3	63.0					1.1	0.56	2.26
250121-895-GP	21/01/25	355	29.5	165	4:00	1	34.5	47.4	63.8	90	29.0	37.5	49.0	1.1	0.57	2.24
250114-606-GP	14/01/25	365	29.6	165	4:00	1	33.8	47.3	62.0	80	27.5	38.0	52.5	1.3	0.55	2.27
250110-371-GP	10/01/25	375	29.6	165	3:45	1	33.7	47.1	62.2	80	33.5	45.0	55.0	1.1	0.57	2.33
250101-082-GP	01/01/25	380	29.1	165	3:45	1	32.8	45.3	63.5	100	22.0	31.0	44.0	1.6	0.54	2.29
241223-438-GP	23/12/24	370	29.1	180	4:15	1	32.1	44.4	66.0	100	22.0	30.5	45.0	1.4	0.55	2.30
241220-143-GP	20/12/24	365	29.1	180	4:30	2	33.7	46.2	65.6					1.5	0.54	2.30
241216-141-GP	16/12/24	380	29.1	165	3:45	0	32.2	44.0	64.0	90	24.0	34.0	47.5	1.7	0.54	2.28
241210-928-GP	10/12/24	380	29.6	150	3:45	1	33.4	45.3	65.8					1.8	0.55	2.30

The above samples were tested as received in accordance with the current terms of accreditation and methods stated in NZS 3122:2009 with the exception of: Chemical composition to ASTM C114-23

All concrete testing conducted in accordance with NZS 3112:1986.

This Report must not be reproduced except in full

Vincent Lane
Works Chemist



Portland Works, Portland, Whangarei 0178

Date issued: 7/04/2025

Page 1 of 3

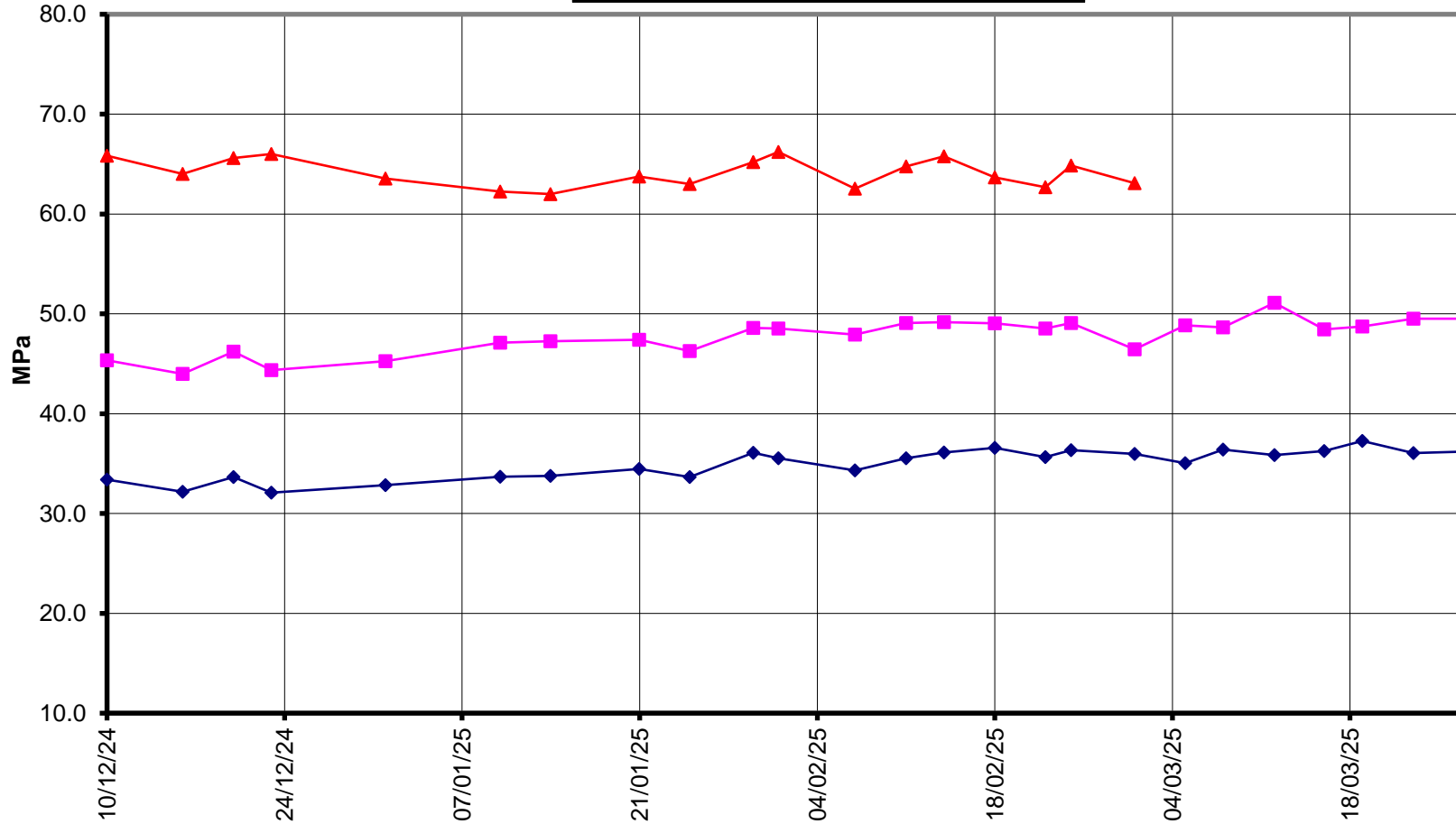


EcoSure® Type GP Cement

Compressive Strength ISO-CEN Mortar (Bulk Dispatch)



28 Days 7 Days 3 Days



Date





EcoSure® Type GP Cement

Compressive Strength Concrete (Bulk Dispatch)



—x— 28 Days —■— 7 Days —◆— 3 Days —x— Slump

