

# CERTIFICATE OF QUALITY

## EcoFast® Type HE Cement

NZS 3122:2009



Issued to: National Sales Manager

Test Report No: 26#51

info@goldenbay.co.nz

Code	Week Ending	Specific Surface Area	Normal Consistency	Initial Set	Final Set	Soundness	Compressive Strength								Free Lime	Sodium Equivalent (NaEq)	Sulphur Trioxide (SO <sub>3</sub> )	
							ISO-CEN				Concrete							
							1 day	3 days	7 days	28 days	Slump	1 day	3 days	7 days				28 days
Mean		523	33.0	129	3:12	1	23.0	42.1	54.8	67.5	87.2	15.5	39.9	48.1	57.5	1.4	0.56	2.38
Standard Deviation		16	0.8	13	0:12	0.5	1.1	1.2	1.1	1.5	8.9	1.6	3.3	3.1	3.0	0.3	0.02	0.04
Min		500	31.7	105	3:00	0	21.3	39.4	52.7	64.2	70.0	13.5	34.5	43.5	52.5	0.6	0.52	2.31
Max		555	34.6	150	3:30	2	25.4	44.4	56.8	70.9	110.0	20.0	48.0	56.0	64.0	1.9	0.59	2.45
NZS 3122:2009 Requirements				45 min	6:00 max	5 max		25.0 min	40.0 min								0.6 max	3.5 max
Units		m <sup>2</sup> /kg	%	minutes	hrs:mins	mm	Mpa	MPa	MPa	MPa	mm	Mpa	MPa	MPa	MPa	%	%	%
260313-400-HE	13/03/26	500	32.1	135	3:15	0	21.5	42.6	53.4	68.3	90	16.0	41.0	51.0	63.0	1.2	0.56	2.35
260306-691-HE	06/03/26	510	32.1	150	3:30	1	22.5	42.2	56.3	68.3	80	15.5	44.5	54.0	63.0	1.0	0.55	2.31
260213-879-HE	13/02/26	510	32.1	135	3:15	1	22.5	42.2	54.8	67.6	100	15.5	41.5	49.5	55.5	0.6	0.55	2.31
260205-222-HE	05/02/26	550	32.8	135	3:15	0	24.9	44.3	56.1	67.9	100	13.5	42.0	48.0	59.5	1.3	0.55	2.37
260123-853-HE	23/01/26	545	32.1	120	3:00	2	21.9	42.7	54.9	67.4	80	15.5	43.0	51.5	62.5	1.6	0.59	2.36
260109-297-HE	09/01/26	520	32.1	120	3:00	2	21.3	41.9	54.4	67.0	80	14.5	38.0	47.5	58.0	1.8	0.57	2.36
251224-617-HE	24/12/25	510	32.1	120	3:00	1	21.9	39.4	52.8	68.3	90	13.5	34.5	43.5	54.0	1.6	0.57	2.41
251214-159-HE	14/12/25	555	33.3	120	3:00	1	22.5	41.0	54.5	68.3	100	13.5	37.0	46.5	57.0	1.1	0.56	2.35
251127-327-HE	27/11/25	520	33.4	105	3:00	0	22.9	42.0	55.8	68.4	70	15.0	36.5	44.5	55.5	1.3	0.58	2.40
251110-639-HE	10/11/25	525	32.2	105	3:00	1	22.7	42.2	54.6	67.7	90	14.5	38.0	45.5	53.5	1.3	0.58	2.38
251102-112-HE	02/11/25	515	32.7	135	3:15	1	24.0	42.9	55.6	70.1	90	13.5	37.5	44.5	52.5	1.4	0.56	2.43
251016-395-HE	16/10/25	520	33.3	120	3:15	1	25.4	44.4	55.8	70.9	90	15.0	39.0	46.5	57.5	1.5	0.59	2.41
250928-832-HE	28/09/25	520	33.5	135	3:15	1	23.8	42.1	55.0	67.0	90	15.0	39.5	46.5	55.0	1.2	0.58	2.40
250908-974-HE	08/09/25	510	33.6	105	3:00	1	23.0	40.6	54.5	68.8	90	16.0	39.0	47.0	58.5	1.5	0.56	2.38
250825-423-HE	25/08/25	545	34.1	135	3:30	1	23.7	42.9	55.4	67.5	80	20.0	48.0	54.0	64.0	1.6	0.57	2.43
250803-476-HE	03/08/25	535	33.6	135	3:30	1	22.6	41.3	55.0	65.5	80	15.0	37.5	45.0	56.5	1.7	0.56	2.34
250725-895-HE	25/07/25	515	33.6	135	3:15	1	22.8	41.7	55.0	67.1	110	15.0	36.0	47.0	56.0	1.6	0.56	2.43
250706-288-HE	06/07/25	510	33.4	135	3:15	0	24.9	40.6	53.7	64.2	90	17.5	40.5	46.5	56.5	1.8	0.53	2.39
250704-070-HE	04/07/25	515	34.6	150	3:30	0	22.0	41.7	55.1	64.6	90	16.5	38.0	46.5	54.0	1.8	0.52	2.32
250621-507-HE	21/06/25	540	34.4	120	3:00	1	23.5	41.0	53.1	65.6	80	18.5	43.5	48.5	58.5	1.9	0.57	2.45
250528-476-HE	28/05/25	540	33.2	120	3:00	1	24.0	42.1	55.7	68.4	90	14.5	36.5	49.0	58.0	1.7	0.56	2.39
250512-938-HE	12/05/25	530	33.2	135	3:15	0	23.5	43.5	56.8	67.6	80	17.0	41.0	49.0	58.0	1.3	0.57	2.38
250418-786-HE	18/04/25	510	32.4	135	3:00	1	22.7	43.3	55.0	68.2	80	17.5	46.5	56.0	62.5	1.4	0.58	2.36
250327-064-HE	27/03/25	520	31.7	135	3:30	2	22.9	40.5	52.7	65.8	80	14.0	38.5	49.0	57.5	1.2	0.58	2.31
250214-916-HE	14/02/25	500	33.3	150	3:30	1	22.2	42.7	53.4	66.8	80	15.5	40.0	47.0	57.0	1.4	0.55	2.38

The above samples were tested as received in accordance with the current terms of accreditation and methods stated in NZS 3122:2009 with the exception of:

Chemical Analysis to ASTM C114-23

All concrete testing conducted in accordance with NZS 3112:1986.

This Report must not be reproduced except in full

Marley Korach-Salt  
Chemical Technician



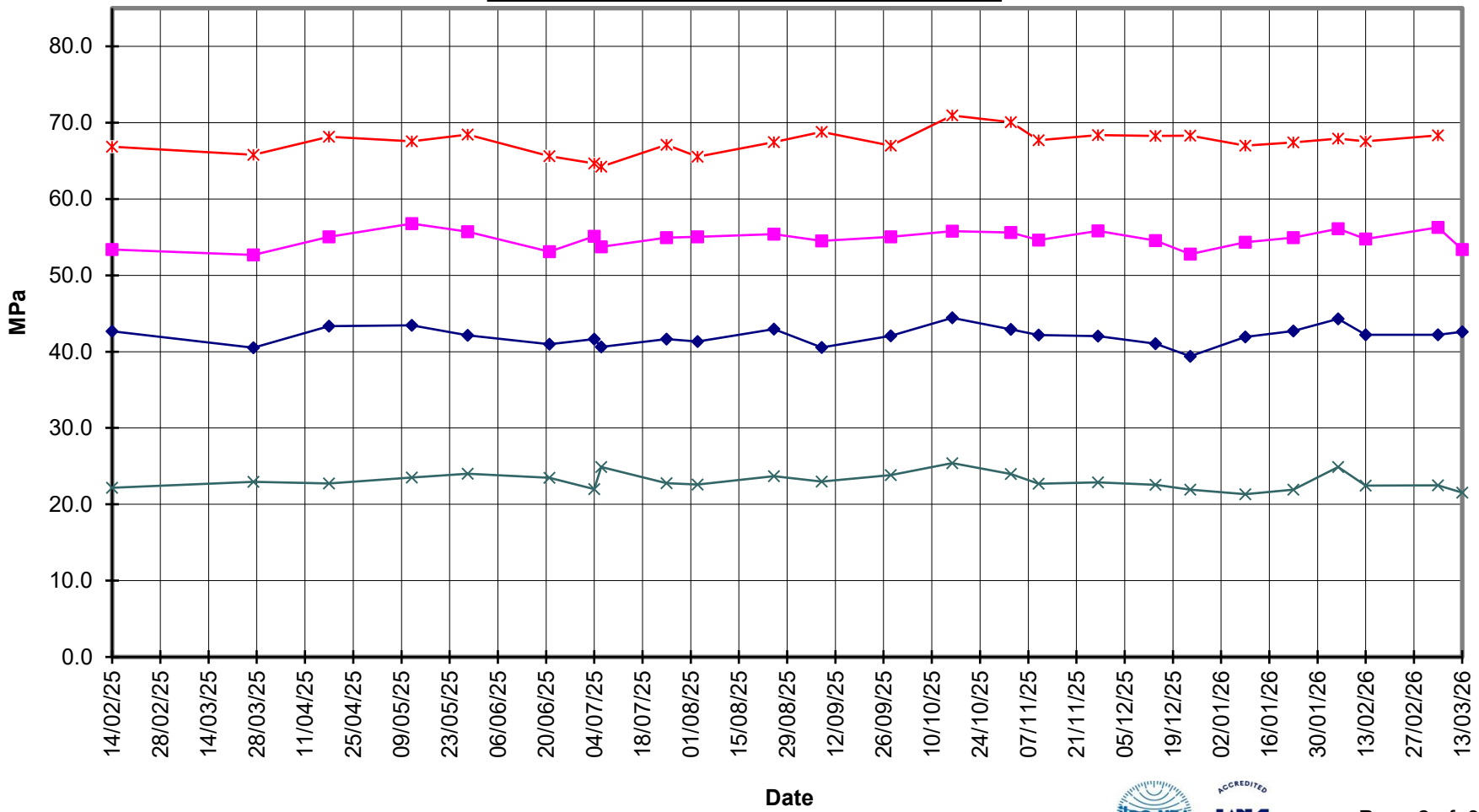
Portland Works, Portland, Whangarei 0178

Date issued: 22/04/26

Page 1 of 3



**EcoFast<sup>®</sup>**  
**Type HE Cement**  
**Compressive Strength ISO-CEN Mortar**





**EcoFast®  
Type HE Cement**



**Compressive Strength Concrete**

—x— 28 Days —■— 7 Days —◆— 3 Days —x— 1 Day —\*— Slump

