



# CERTIFICATE OF QUALITY

## EcoSure® Type GP Cement

NZS3122:2009 (Bulk & Bag Dispatch)



Issued to: National Sales Manager

Test Report No: 26#90

info@goldenbay.co.nz

Code	Week Ending / Voyage	Specific Surface Area	Normal Consistency	Initial Set	Final Set	Soundness	Compressive Strength							Free Lime	Sodium Equivalent (NaEq)	Sulphur Trioxide (SO <sub>3</sub> )
							ISOCEN			Slump	Concrete					
							3 days	7 days	28 days		3 days	7 days	28 days			
Mean		389	29.2	165	3:59	1	36.3	50.5	67.4	98	28.4	38.6	49.7	1.3	0.55	2.31
Standard Deviation		6	0.4	8	0:10	0.2	0.7	1.0	2.2	14	2.1	2.0	1.9	0.2	0.01	0.03
Min		380	28.8	150	3:45	1	34.6	49.0	63.1	80	25.0	35.0	48.0	1.0	0.52	2.25
Max		400	30.3	180	4:15	2	37.2	52.1	71.2	120	31.5	41.5	53.0	1.8	0.57	2.37
NZS 3122:2009 Requirements				45 min	6:00 max	5 max		35.0 min	45.0 min						0.6 max	3.5 max
Units		m <sup>2</sup> /kg	%	minutes	hrs:mins	mm	MPa	MPa	MPa	mm	MPa	MPa	MPa	%	%	%
260610-998-GP	10/06/26	390	29.8	150	4:00	1	35.4	49.0		80	25.0	35.0		1.6	0.54	2.31
260608-144-GP	08/06/26	395	30.2	150	3:45	1	35.5	49.3						1.8	0.53	2.37
260604-661-GP	04/06/26	380	28.8	150	4:00	1	36.2	49.1						1.7	0.55	2.35
260602-618-GP	02/06/26	390	30.3	165	4:00	1	35.1	49.2		80	26.0	38.5		1.7	0.56	2.32
260526-276-GP	26/05/26	395	29.0	165	4:15	1	36.6	51.5	70.5	90	27.0	37.0		1.4	0.55	2.29
260523-118-GP	23/05/26	385	29.0	165	4:15	1	36.2	50.4	69.2	80	28.0	36.5		1.6	0.54	2.32
260518-879-GP	18/05/26	395	28.9	165	4:00	1	34.6	49.1	66.5					1.3	0.54	2.30
260515-738-GP	15/05/26	400	29.1	165	4:00	1	35.7	51.0	66.0					1.3	0.53	2.32
260511-736-GP	11/05/26	380	29.1	165	4:15	1	35.0	49.8	68.6	80	31.5	40.5	51.5	1.1	0.53	2.32
260506-597-GP	06/05/26	380	29.0	165	4:15	1	36.3	52.1	71.2					1.1	0.54	2.30
260503-595-GP	03/05/26	395	29.1	180	4:15	1	37.2	51.6	69.6	100	31.0	40.5	48.0	1.0	0.55	2.31
260430-433-GP	30/04/26	390	29.1	165	4:00	1	37.2	52.0	70.3	110	31.0	41.5	53.0	1.1	0.54	2.30
260425-328-GP	25/04/26	395	29.2	165	4:00	1	35.7	50.8	68.8					1.1	0.55	2.25
260421-032-GP	21/04/26	390	29.1	165	4:00	1	36.3	50.3	65.7	120	28.5	37.5	48.0	1.2	0.56	2.29
260419-030-GP	19/04/26	390	29.1	180	4:00	1	35.9	50.1	65.6					1.2	0.55	2.34
260415-662-GP	15/04/26	390	29.1	165	3:45	2	36.5	49.5	64.9					1.1	0.57	2.36
260413-660-GP	13/04/26	390	29.1	165	3:45	1	36.8	50.5	64.7	110	30.0	37.0	48.5	1.2	0.56	2.30
260409-313-GP	09/04/26	385	29.1	165	4:00	1	36.6	51.1	65.2	100	28.5	40.5	51.5	1.3	0.56	2.30
260404-192-GP	04/04/26	390	29.1	165	4:00	1	36.7	49.9	66.1	110	26.0	37.0	48.0	1.5	0.57	2.29
260401-190-GP	01/04/26	380	29.1	165	3:45	1	37.1	50.5	67.1					1.5	0.56	2.32
260327-858-GP	27/03/26	380	29.1	165	3:45	1	37.1	51.6	67.9					1.4	0.55	2.30
260322-721-GP	22/03/26	385	29.1	165	4:00	1	36.4	50.4	66.1	110	28.0	39.5	49.0	1.4	0.52	2.26
260318-396-GP	18/03/26	395	29.1	165	4:00	1	37.1	50.9	68.8					1.3	0.52	2.30
260314-394-GP	14/03/26	390	29.1	165	3:45	1	37.0	51.9	69.2	100	28.5	40.5	49.5	1.4	0.52	2.31
260309-033-GP	09/03/26	385	29.1	180	4:00	1	36.2	49.5	63.1					1.4	0.55	2.36

The above samples were tested as received in accordance with the current terms of accreditation and methods stated in NZS 3122:2009 with the exception of: Chemical composition to ASTM C114-23  
All concrete testing conducted in accordance with NZS 3112:1986.

This Report must not be reproduced except in full

Marley Korach-Salt  
Chemical Technician



Portland Works, Portland, Whangarei 0178

Date issued: 29/06/2026

Page 1 of 3

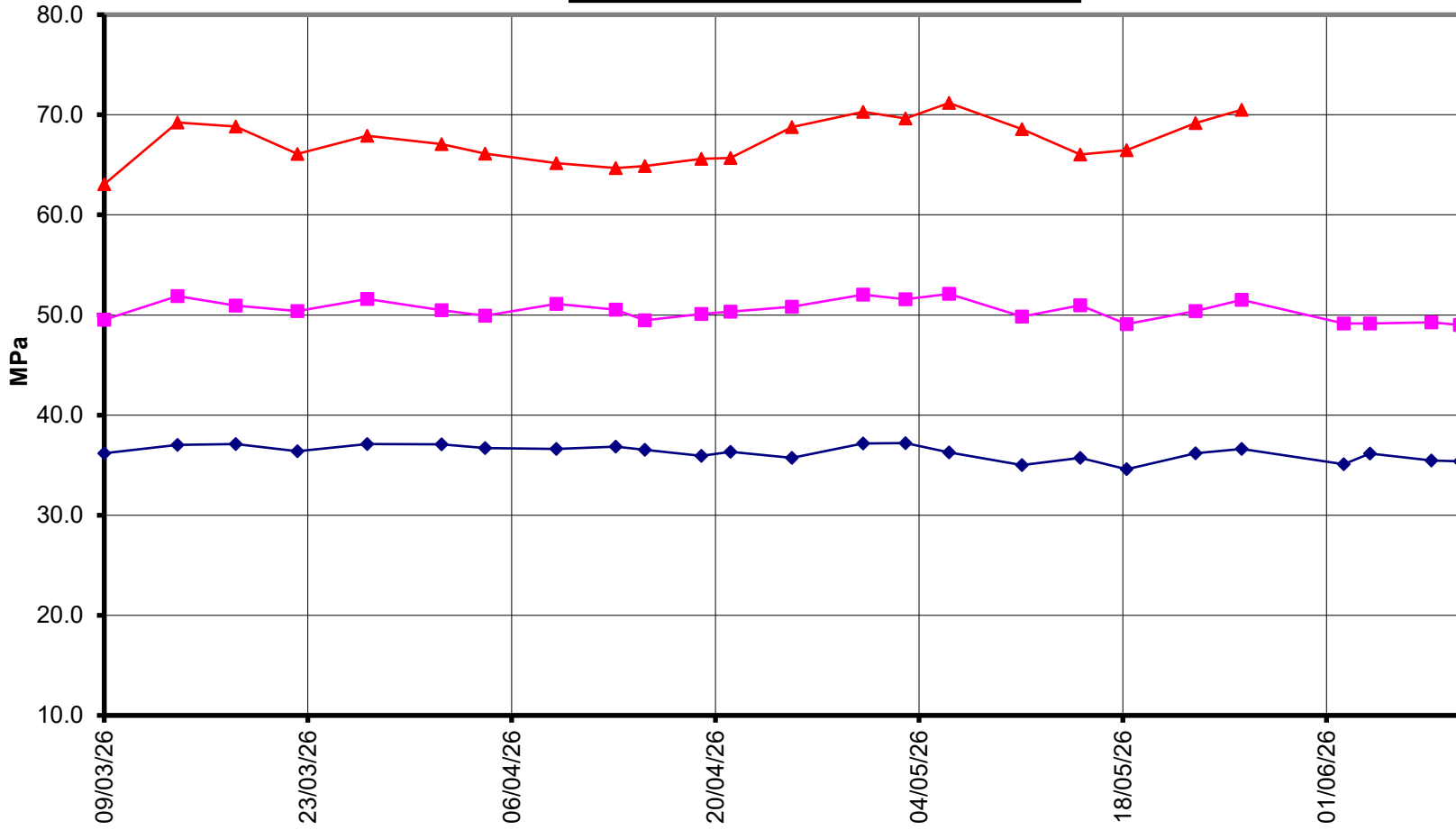


# EcoSure® Type GP Cement

## Compressive Strength ISO-CEN Mortar (Bulk Dispatch)



—▲— 28 Days    —■— 7 Days    —◆— 3 Days





# EcoSure® Type GP Cement

## Compressive Strength Concrete (Bulk Dispatch)



—x— 28 Days    —■— 7 Days    —◆— 3 Days    —x— Slump

