



# CERTIFICATE OF QUALITY

## EverSure™ Type GP Cement

NZS3122:2009 (Bulk Despatch)



Our  
NZ made  
cement is  
genuine  
NZ grade  
cement.

Issued to: National Sales Manager

Test Report No: 20#09

info@goldenbay.co.nz

| Code                       | Week Ending / Voyage | Specific Surface Area | Normal Consistency | Initial Set | Final Set | Soundness | Compressive Strength |          |          |          |        |        | Free Lime | Sodium Equivalent (NaEq) | Sulphur Trioxide (SO3) |         |
|----------------------------|----------------------|-----------------------|--------------------|-------------|-----------|-----------|----------------------|----------|----------|----------|--------|--------|-----------|--------------------------|------------------------|---------|
|                            |                      |                       |                    |             |           |           | ISOCEN               |          |          | Concrete |        |        |           |                          |                        |         |
|                            |                      |                       |                    |             |           |           | 3 days               | 7 days   | 28 days  | Slump    | 3 days | 7 days |           |                          |                        | 28 days |
| Mean                       |                      | 330                   | 28.8               | 136         | 3:31      | 1         | 32.8                 | 45.4     | 65.4     | 93.1     | 25.7   | 35.0   | 46.2      | 2.0                      | 0.53                   | 2.2     |
| Standard Deviation         |                      | 9                     | 0.1                | 8           | 0:09      | 0.4       | 1.2                  | 1.3      | 1.3      | 4.8      | 2.3    | 1.9    | 2.1       | 0.2                      | 0.01                   | 0.0     |
| Min                        |                      | 315                   | 28.7               | 120         | 3:15      | 0         | 30.6                 | 43.1     | 63.3     | 90.0     | 22.8   | 32.4   | 43.4      | 1.3                      | 0.51                   | 2.2     |
| Max                        |                      | 355                   | 28.9               | 150         | 3:45      | 2         | 35.5                 | 48.3     | 67.6     | 100.0    | 30.9   | 37.2   | 49.9      | 2.3                      | 0.55                   | 2.3     |
| NZS 3122:2009 Requirements |                      |                       |                    | 45 max      | 6:00 max  | 5 max     |                      | 35.0 min | 45.0 min |          |        |        |           |                          | 0.6 max                | 3.5 max |
| Units                      |                      | m2/kg                 | %                  | minutes     | hrs:mins  | mm        | MPa                  | MPa      | MPa      | mm       | MPa    | MPa    | MPa       | %                        | %                      | %       |
| 200109-462-GP              | 09/01/20             | 325                   | 28.9               | 135         | 3:30      | 1         | 30.9                 |          |          | 100      | 22.8   |        |           | 2.2                      | 0.52                   | 2.2     |
| 200103-087-GP              | 1/01/20              | 320                   | 28.9               | 120         | 3:30      | 1         | 32.4                 | 44.4     |          | 90       | 25.9   | 36.3   |           | 1.8                      | 0.54                   | 2.2     |
| 191227-420-GP              | 27/12/19             | 325                   | 28.9               | 135         | 3:30      | 1         | 30.8                 | 46.4     |          |          |        |        |           | 1.9                      | 0.53                   | 2.2     |
| 191223-407-GP              | 23/12/19             | 320                   | 28.8               | 135         | 3:30      | 1         | 30.7                 | 43.1     |          | 90       | 25.2   | 33.5   |           | 1.8                      | 0.53                   | 2.2     |
| 191219-013-GP              | 19/12/19             | 340                   | 28.8               | 135         | 3:15      | 1         | 30.6                 | 47.0     |          | 100      | 23.1   | 33.0   |           | 2.0                      | 0.52                   | 2.2     |
| 191215-016-GP              | 15/12/19             | 325                   | 28.8               | 120         | 3:15      | 1         | 31.8                 | 45.6     |          |          |        |        |           | 1.3                      | 0.55                   | 2.2     |
| 191213-602-GP              | 13/12/19             | 325                   | 28.7               | 135         | 3:30      | 1         | 32.5                 | 44.9     | 65.3     | 90       | 25.8   | 36.3   | 43.4      | 2.0                      | 0.55                   | 2.2     |
| 191211-600-GP              | 11/12/19             | 330                   | 28.7               | 135         | 3:30      | 1         | 31.6                 | 45.0     | 64.8     |          |        |        |           | 2.1                      | 0.54                   | 2.2     |
| 191207-225-GP              | 07/12/19             | 335                   | 28.7               | 120         | 3:15      | 1         | 32.2                 | 43.7     | 63.8     |          |        |        |           | 1.8                      | 0.55                   | 2.3     |
| 191204-223-GP              | 04/12/19             | 340                   | 28.7               | 135         | 3:15      | 1         | 33.4                 | 44.7     | 64.6     | 90       | 28.3   | 37.0   | 49.9      | 2.0                      | 0.54                   | 2.2     |
| 191129-877-GP              | 29/11/19             | 335                   | 28.7               | 135         | 3:30      | 1         | 33.6                 | 45.8     |          |          |        |        |           | 2.0                      | 0.52                   | 2.2     |
| 191128-830-GP              | 25/11/19             | 330                   | 28.7               | 135         | 3:45      | 2         | 33.5                 | 46.6     | 63.9     | 90       | 24.4   | 32.8   | 47.0      | 2.3                      | 0.53                   | 2.2     |
| 191122-545-GP              | 22/11/19             | 355                   | 28.7               | 135         | 3:45      | 2         | 35.5                 | 48.3     | 67.6     |          |        |        |           | 2.0                      | 0.53                   | 2.2     |
| 191120-479-GP              | 20/11/19             | 330                   | 28.7               | 135         | 3:30      | 1         | 33.8                 | 46.6     | 65.8     | 100      | 23.5   | 32.4   | 44.7      | 2.2                      | 0.54                   | 2.2     |
| 191115-183-GP              | 15/11/19             | 330                   | 28.7               | 135         | 3:30      | 1         | 33.8                 | 45.7     | 64.5     | 100      | 25.2   | 34.7   | 43.6      | 2.0                      | 0.52                   | 2.2     |
| 191112-181-GP              | 12/11/19             | 325                   | 28.8               | 135         | 3:30      | 1         | 32.9                 | 45.2     | 65.5     |          |        |        |           | 2.1                      | 0.54                   | 2.2     |
| 191106-750-GP              | 06/11/19             | 335                   | 28.8               | 150         | 3:30      | 1         | 34.0                 | 46.4     | 67.2     | 90       | 30.9   | 37.2   | 45.7      | 2.1                      | 0.53                   | 2.2     |
| 191103-752-GP              | 03/11/19             | 335                   | 28.8               | 150         | 3:45      | 2         | 33.1                 | 43.8     | 65.1     |          |        |        |           | 2.3                      | 0.53                   | 2.2     |
| 191101-352-GP              | 01/11/19             | 330                   | 28.7               | 150         | 3:30      | 1         | 33.7                 | 44.6     | 64.7     | 90       | 28.1   | 37.1   | 47.3      | 2.3                      | 0.54                   | 2.2     |
| 191030-354-GP              | 30/10/19             | 340                   | 28.7               | 135         | 3:30      | 2         | 33.3                 | 45.7     | 66.1     |          |        |        |           | 2.0                      | 0.53                   | 2.2     |
| 191028-981-GP              | 28/10/19             | 320                   | 28.7               | 150         | 3:30      | 1         | 33.5                 | 46.3     | 65.3     |          |        |        |           | 2.3                      | 0.53                   | 2.2     |
| 191024-979-GP              | 24/10/19             | 325                   | 28.7               | 135         | 3:30      | 0         | 33.1                 | 44.8     | 67.4     | 90       | 25.4   | 36.9   | 47.4      | 2.3                      | 0.53                   | 2.2     |
| 191017-569-GP              | 17/10/19             | 315                   | 28.8               | 135         | 3:45      | 1         | 33.6                 | 43.4     | 65.2     | 90       | 25.4   | 33.2   | 47.1      | 2.0                      | 0.52                   | 2.2     |
| 191013-571-GP              | 13/10/19             | 330                   | 28.7               | 135         | 3:45      | 1         | 33.0                 | 46.9     | 63.3     |          |        |        |           | 2.1                      | 0.52                   | 2.2     |
| 191010-383-GP              | 10/10/19             | 320                   | 28.8               | 135         | 3:45      | 1         | 33.5                 | 45.4     | 67.4     |          |        |        |           | 1.9                      | 0.51                   | 2.2     |

This Report must not be reproduced except in full

The above samples were tested as received in accordance with the current terms of accreditation and methods stated in NZS 3122:2009 with the exception of:  
Chemical composition to ASTM C114-18

- Concrete Compressive Strength test results outside the scope of accreditation



Portland Works, Portland, Whangarei 0178

Sample retested  
# No result available at time of certificate issue

Jim White  
Quality System Co-ordinator

Date issued: 17/01/2020

Page 1 of 3

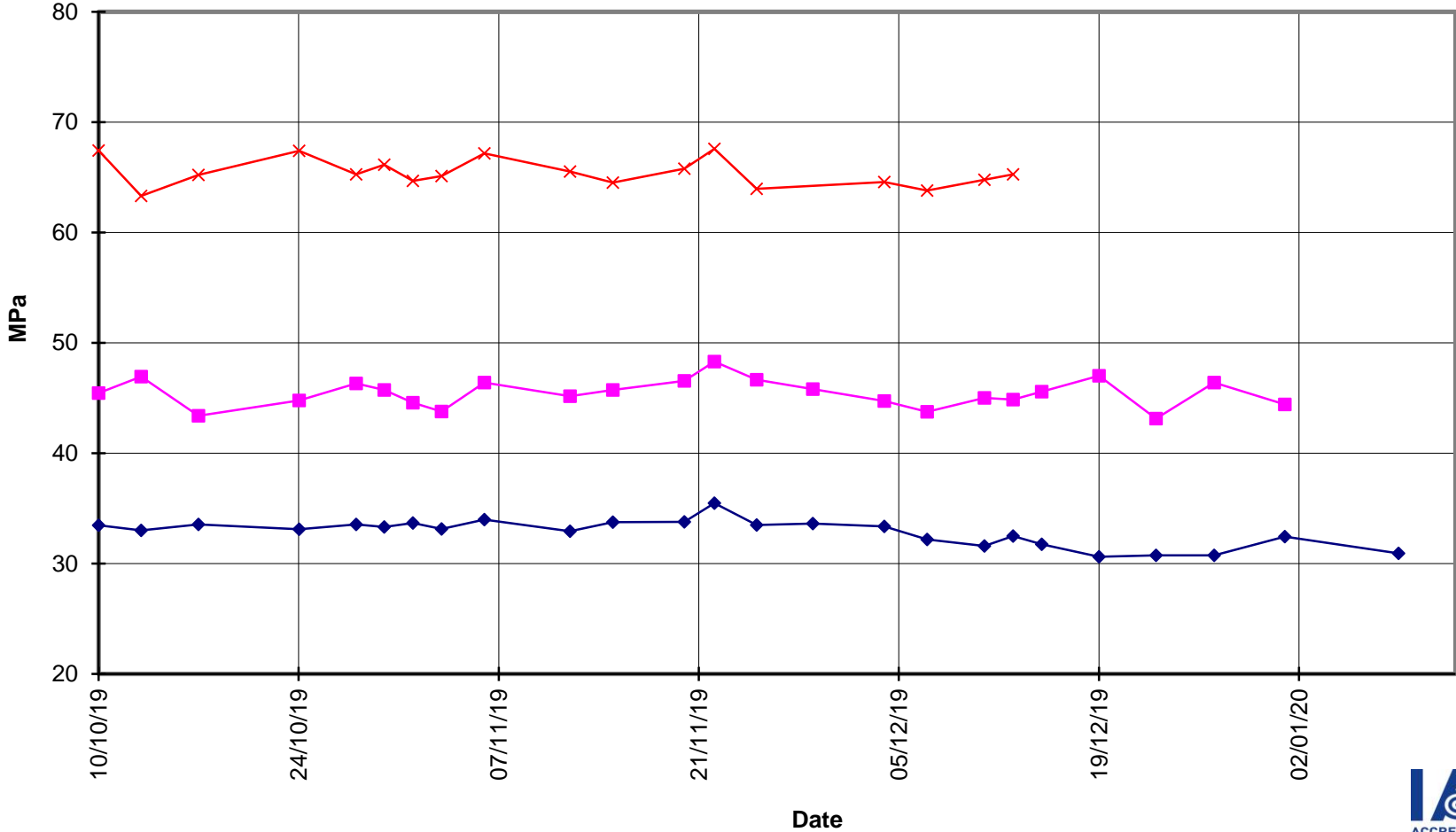


**EverSure™  
Type GP Cement**



**Compressive Strength ISO-CEN Mortar  
(Bulk Despatch)**

—x— 28 Days    —■— 7 Days    —◆— 3 Days





**EverSure™  
Type GP Cement**

**Compressive Strength Concrete  
(Bulk Despatch)**



—x— 28 Days —■— 7 Days —◆— 3 Days —■— Slump

