



# CERTIFICATE OF QUALITY

## EverSure™ Type GP Cement

NZS3122:2009 (Bulk Despatch)



Our  
NZ made  
cement is  
genuine  
NZ grade  
cement.

Issued to: National Sales Manager

Test Report No: 20#82

info@goldenbay.co.nz

Code	Week Ending / Voyage	Specific Surface Area	Normal Consistency	Initial Set	Final Set	Soundness	Compressive Strength						Free Lime	Sodium Equivalent (NaEq)	Sulphur Trioxide (SO3)	
							ISOCEN			Concrete						
							3 days	7 days	28 days	Slump	3 days	7 days				28 days
Mean		337	29.0	133	3:30	1	32.8	46.0	66.3	92.7	25.7	34.2	47.2	1.7	0.54	2.2
Standard Deviation		10	0.1	6	0:10	0.6	0.9	1.6	1.2	3.7	2.2	1.9	2.9	0.2	0.01	0.0
Min		320	28.8	120	3:15	0	30.9	43.0	64.5	90.0	22.7	32.0	43.2	1.4	0.52	2.1
Max		355	29.2	135	3:45	2	34.6	48.5	67.8	100.0	28.8	38.7	51.6	2.2	0.57	2.3
NZS 3122:2009 Requirements				45 min	6:00 max	5 max		35.0 min	45.0 min						0.6 max	3.5 max
Units		m2/kg	%	minutes	hrs:mins	mm	MPa	MPa	MPa	mm	MPa	MPa	MPa	%	%	%
200508-344-GP	08/05/20	325	28.9	135	3:45	2	32.6							1.7	0.55	2.3
200505-327-GP	5/05/20	345	28.8	135	3:30	1	32.8			90	27.1			2.0	0.52	2.2
200430-034-GP	30/04/20	345	28.9	135	3:30	0	32.5	44.3		100	22.7	33.2		2.0	0.53	2.3
200325-999-GP	25/03/20	345	29.2	135	3:30	0	32.9	45.8		90	26.6	34.2		2.0	0.55	2.2
200317-595-GP	17/03/20	350	29.2	135	3:15	0	33.3	46.0		90	27.5	35.0		2.0	0.53	2.2
200315-597-GP	15/03/20	345	29.2	135	3:15	0	33.8	48.4						1.8	0.55	2.1
200311-240-GP	11/03/20	355	29.2	120	3:15	1	34.3	48.3						1.7	0.56	2.3
200308-190-GP	08/03/20	340	29.2	135	3:45	1	33.1	48.1		90	26.5	34.5	48.9	1.8	0.54	2.1
200305-836-GP	05/03/20	335	29.0	135	3:45	1	32.4	46.9		95	25.2	32.3	48.9	1.7	0.57	2.2
200303-834-GP	03/03/20	355	29.0	135	3:30	1	34.6	48.5						1.6	0.54	2.2
200225-421-GP	25/02/20	340	29.0	135	3:45	1	34.0	47.2		90	26.6	33.7	50.8	1.6	0.55	2.1
200223-471-GP	23/02/20	330	28.9	120	3:15	1	33.6	46.5						1.8	0.55	2.2
200219-040-GP	19/02/20	340	29.0	135	3:45	1	34.0	48.0						1.4	0.55	2.2
200216-038-GP	16/02/20	340	28.9	135	3:45	1	32.5	45.4		95	23.2	33.3	44.2	1.7	0.55	2.2
200213-682-GP	13/02/20	325	28.9	135	3:30	1	32.1	45.0	67.3	95	23.3	32.7	43.8	1.6	0.53	2.2
200209-680-GP	09/02/20	330	28.8	135	3:30	1	32.4	45.3	67.1					1.7	0.53	2.2
200207-517-GP	07/02/20	320	28.8	135	3:30	2	31.5	45.1	67.8					1.7	0.54	2.2
200205-516-GP	05/02/20	335	29.0	135	3:30	1	33.2	46.8	67.4	90	27.6	38.7	47.4	1.7	0.55	2.2
200130-242-GP	30/01/20	335	28.9	135	3:30	2	32.7	44.6	65.9	90	28.8	36.3	48.6	1.7	0.54	2.2
200127-262-GP	27/01/20	340	29.0	120	3:30	1	32.5	45.2	65.9					1.5	0.54	2.2
200124-899-GP	24/01/20	335	28.9	135	3:15	1	33.8	43.0	64.5					1.8	0.53	2.2
200121-840-GP	21/01/20	340	28.9	135	3:30	0	31.7	44.5	66.0	90	28.6	34.5	45.8	1.5	0.54	2.2
200114-594-GP	14/01/20	320	28.8	135	3:30	1	31.4	46.0	67.7	95	22.8	32.0	45.5	1.8	0.54	2.2
200109-462-GP	09/01/20	325	28.9	135	3:30	1	30.9	44.1	64.6	100	22.8	32.3	43.2	2.2	0.52	2.2
200103-087-GP	01/01/20	320	28.9	120	3:30	1	32.4	44.4	65.5	90	25.9	36.3	51.6	1.8	0.54	2.2

This Report must not be reproduced except in full

The above samples were tested as received in accordance with the current terms of accreditation and methods stated in NZS 3122:2009 with the exception of:

Chemical composition to ASTM C114-18

- Concrete Compressive Strength test results outside the scope of accreditation

#	Sample tested @ 57 days		Sample tested @ 50 days
	Sample tested @ 42 days		
	No result available at time of certificate issue		



Portland Works, Portland, Whangarei 0178

Jim White  
Quality System Co-ordinator

Date issued: 15/05/2020

Page 1 of 3

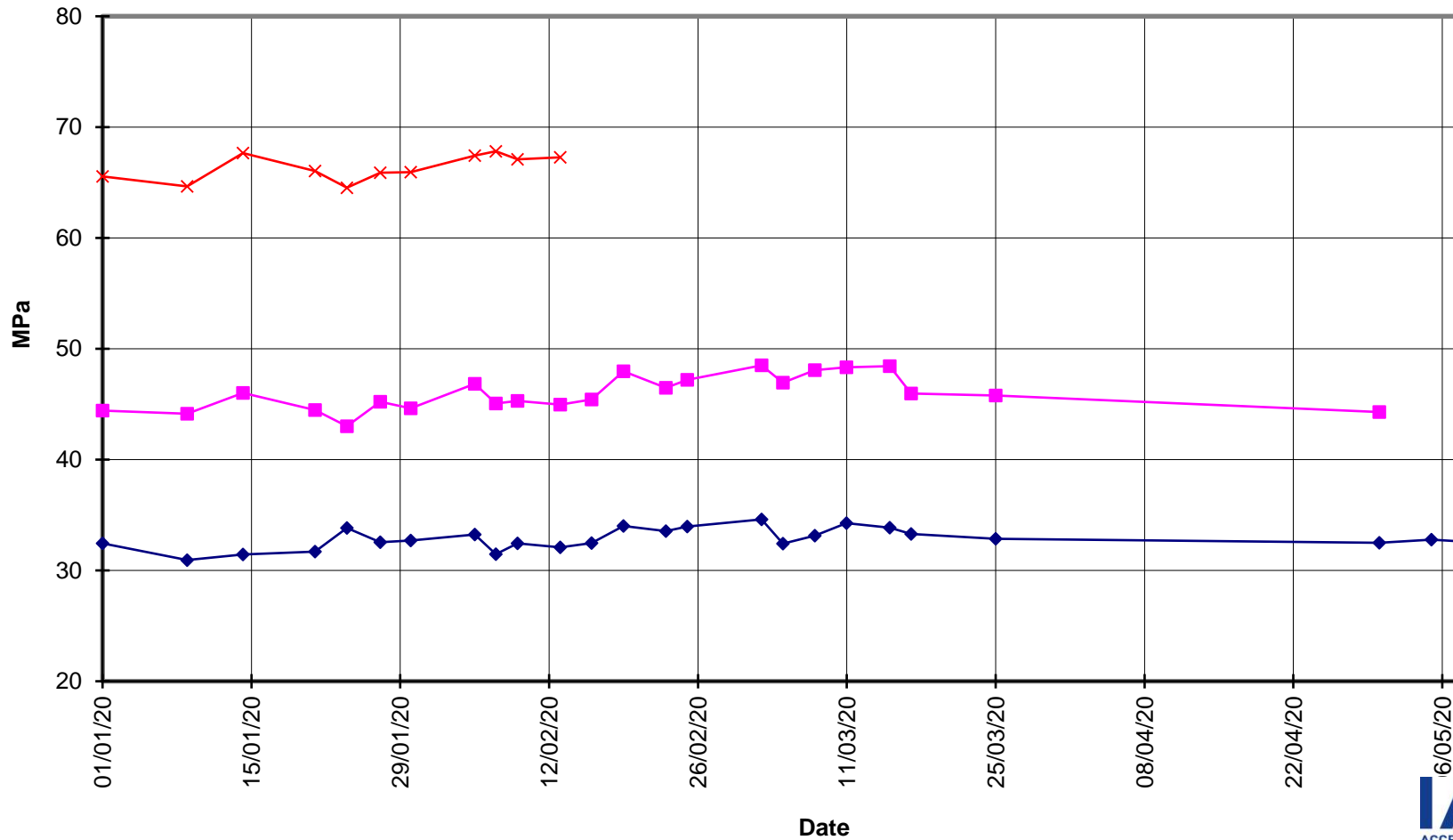


**EverSure™  
Type GP Cement**

**Compressive Strength ISO-CEN Mortar  
(Bulk Despatch)**



—x— 28 Days    —■— 7 Days    —◆— 3 Days





**EverSure™  
Type GP Cement**

**Compressive Strength Concrete  
(Bulk Despatch)**



—x— 28 Days —■— 7 Days —◆— 3 Days —■— Slump

